



2017-18

# Connecticut Community Colleges Data Comparison Report



Office of Institutional  
Research, Planning, and  
Effectiveness Beacon Hall 285

# Table of Contents

List of CT Community Colleges .....	2
Headcount Enrollment .....	3
Full-Time and Part-Time Enrollment .....	4
FTE .....	5
Degree and Certificates Awarded .....	6
IPEDS Comparison Counts .....	7
Full Time Retention Rates .....	7
Part Time Retention Rates .....	8
Percent of Full Time Students Receiving Pell Grants .....	9
Program Completions – two years .....	10
Program Completions – three years .....	11
Program Completions – four years .....	12

Sources: 2017 IPEDS Data Feedback report (published February 2018)  
BOR System Fall Enrollment report

# CT Community College Comparisons Report

---

## List of CT Community Colleges

<b><i>College</i></b>	<b><i>Town</i></b>
Asnuntuck	Enfield
Capital	Hartford
Gateway	New Haven
Housatonic	Bridgeport
Manchester	Manchester
Middlesex	Middletown
Naugatuck Valley	Waterbury
Northwestern	Winsted
Norwalk	Norwalk
Quinebaug Valley	Danielson and Willimantic
Three Rivers	Norwich
Tunxis	Farmington

# Enrollment Headcount

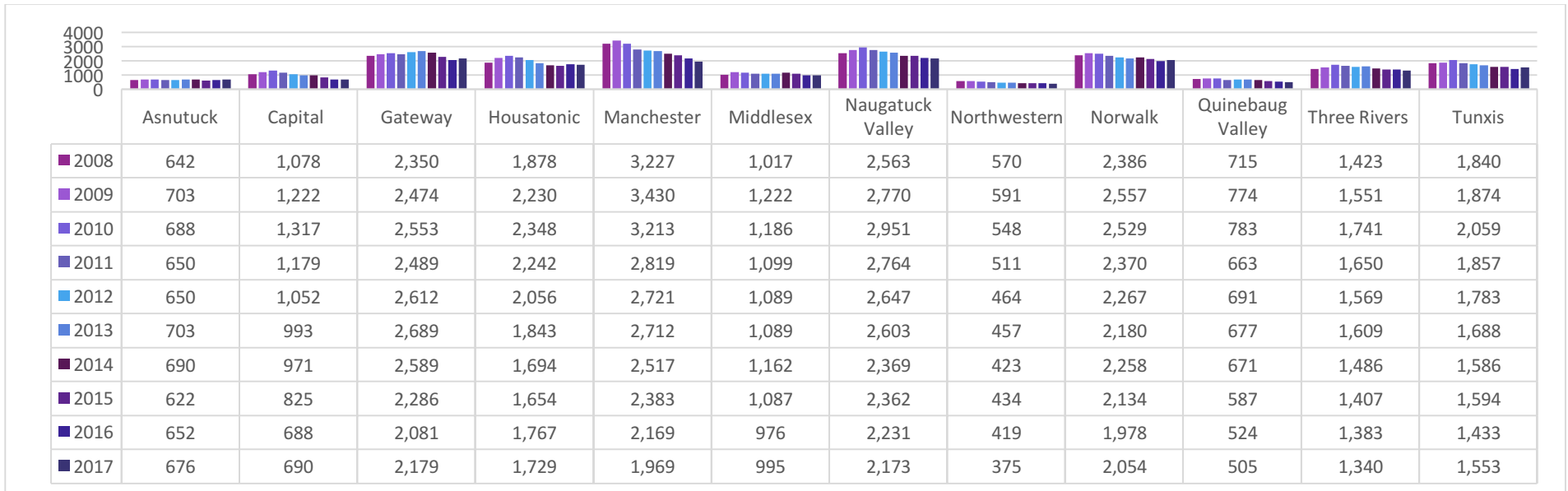
## Total Fall Enrollment



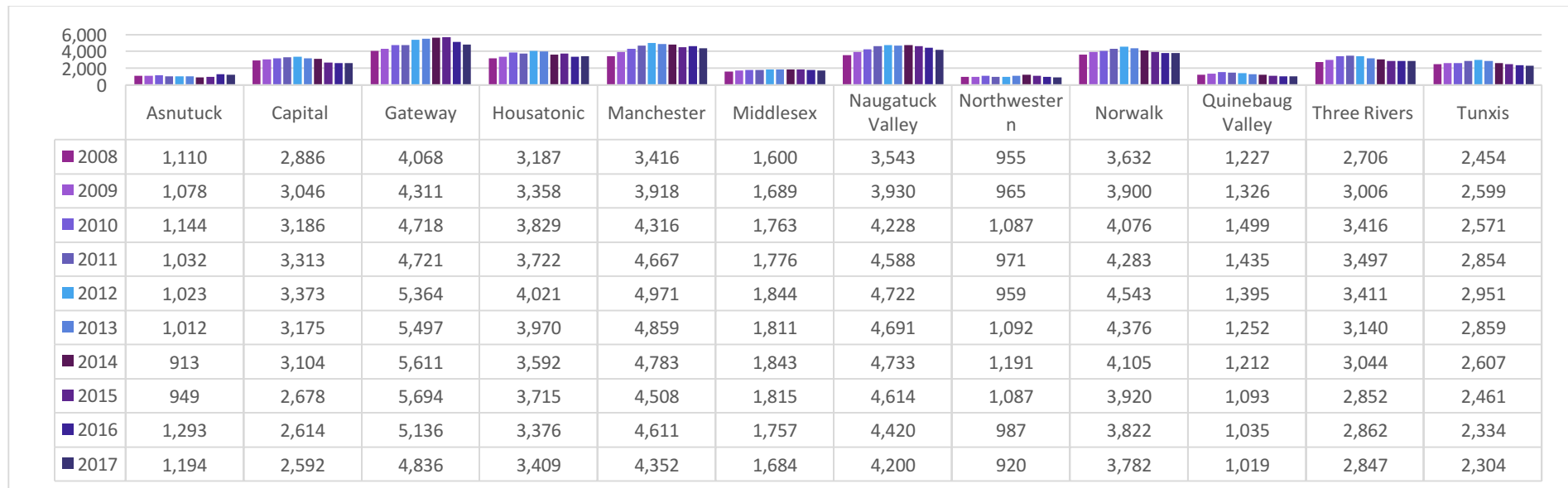
	Asnutuck	Capital	Gateway	Housatonic	Manchester	Middlesex	Naugatuck Valley	Northwestern	Norwalk	Quinebaug Valley	Three Rivers	Tunxis
■ 2008	1,752	3,964	6,418	5,065	6,643	2,617	6,106	1,525	6,018	1,942	4,129	4,294
■ 2009	1,781	4,268	6,785	5,588	7,348	2,911	6,700	1,556	6,457	2,100	4,557	4,473
■ 2010	1,832	4,503	7,271	6,177	7,529	2,949	7,179	1,635	6,605	2,282	5,157	4,630
■ 2011	1,682	4,492	7,210	5,964	7,486	2,875	7,352	1,482	6,653	2,098	5,147	4,711
■ 2012	1,673	4,425	7,976	6,077	7,692	2,933	7,369	1,423	6,810	2,086	4,980	4,734
■ 2013	1,715	4,168	8,186	5,813	7,571	2,900	7,294	1,549	6,556	1,929	4,749	4,547
■ 2014	1,603	4,075	8,200	5,286	7,300	3,005	7,102	1,614	6,363	1,883	4,530	4,193
■ 2015	1,571	3,503	7,980	5,369	6,891	2,902	6,976	1,521	6,054	1,680	4,259	4,055
■ 2016	1,945	3,302	7,217	5,143	6,780	2,733	6,651	1,406	5,800	1,559	4,245	3,767
■ 2017	1,870	3,282	7,015	5,138	6,321	2,679	6,373	1,295	5,836	1,524	4,187	3,857

**Note: Headcount figures do not include students who exclusively audited courses and may differ from other reports, *Source System Enrollment Reports***

## Full-Time Enrollment Headcount

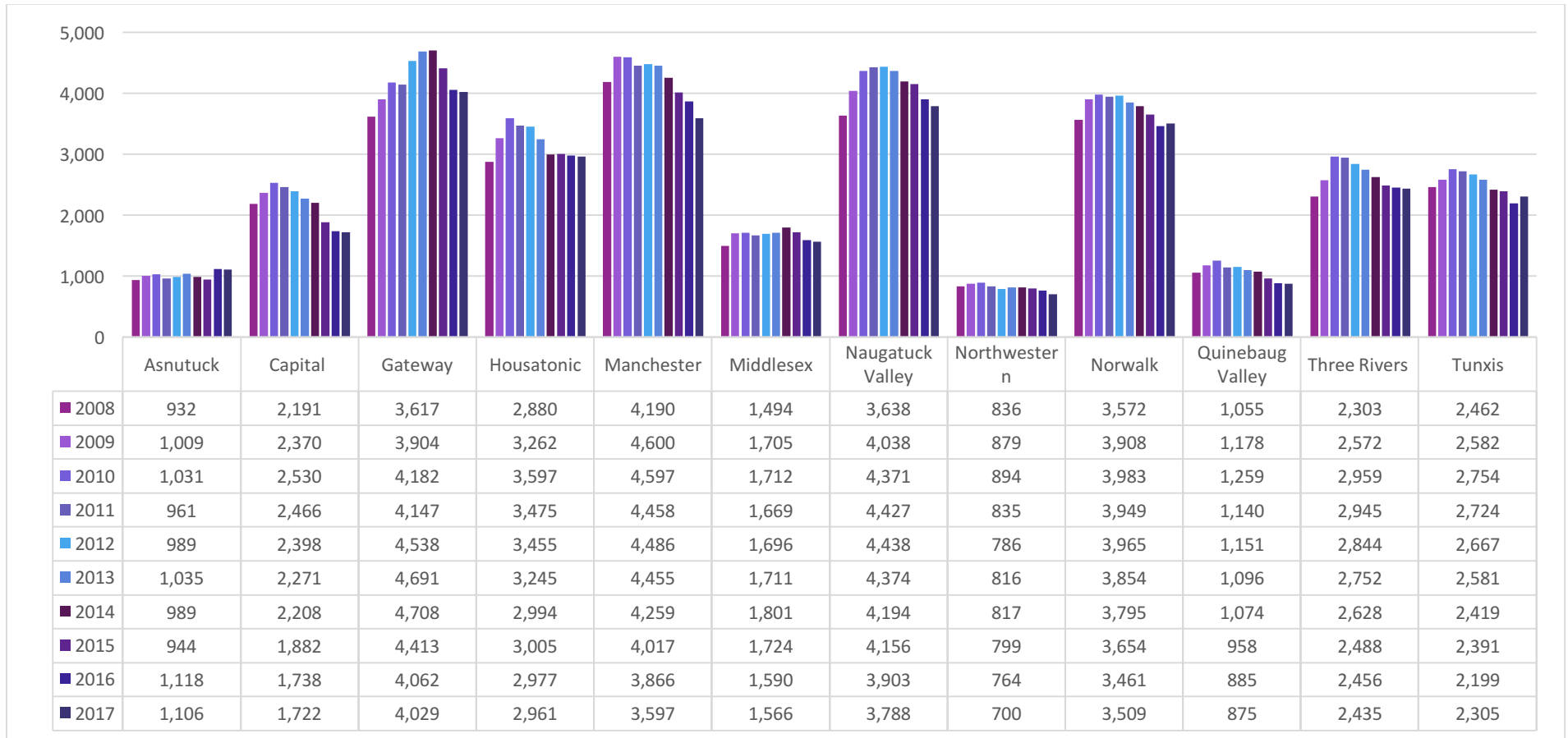


## Part-Time Enrollment Headcount



Note: Headcount figures do not include students who exclusively audited courses and may differ from other reports, *Source: Argos v20130301*

## Full-Time Equivalency (FTE)

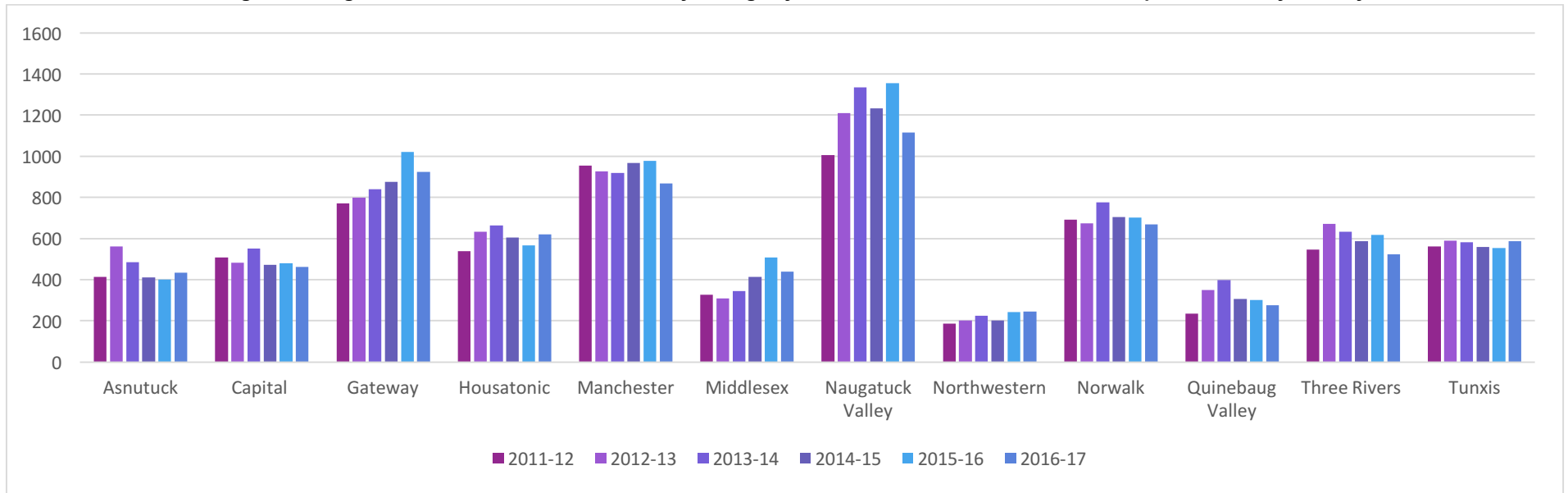


**Note:** Headcount figures do not include students who exclusively audited courses and may differ from other reports, *Source System Enrollment Reports*

## Degree and Certificates Awarded

Semester	2011-12		2012-13		2013-14		2014-15		2015-16		2016-17	
College	#	%	#	%	#	%	#	%	#	%	#	%
Asnuntuck	414	6.1%	563	7.6%	485	6.3%	410	5.6%	401	5.2%	433	6.0%
Capital	507	7.5%	482	6.5%	552	7.1%	472	6.4%	481	6.2%	463	6.5%
Gateway	771	11.4%	799	10.8%	839	10.8%	875	11.9%	1,020	13.2%	924	12.9%
<b>Housatonic</b>	<b>540</b>	<b>8.0%</b>	<b>633</b>	<b>8.5%</b>	<b>665</b>	<b>8.6%</b>	<b>605</b>	<b>8.2%</b>	<b>566</b>	<b>7.3%</b>	<b>620</b>	<b>8.7%</b>
Manchester	956	14.2%	926	12.5%	918	11.8%	967	13.2%	979	12.7%	869	12.1%
Middlesex	327	4.9%	310	4.2%	344	4.4%	414	5.6%	507	6.6%	439	6.1%
Naugatuck Valley	1,007	14.9%	1,211	16.3%	1,334	17.2%	1,233	16.8%	1,356	17.5%	1,116	15.6%
Northwestern	186	2.8%	202	2.7%	226	2.9%	203	2.8%	242	3.1%	246	3.4%
Norwalk	691	10.2%	673	9.1%	775	10.0%	705	9.6%	702	9.1%	870	9.4%
Quinebaug Valley	234	3.5%	350	4.7%	398	5.1%	307	4.2%	302	3.9%	275	3.8%
Three Rivers	546	8.1%	671	9.1%	632	8.2%	586	8.0%	617	8.0%	523	7.3%
Tunxis	563	8.4%	590	8.0%	581	7.5%	560	7.6%	554	7.2%	587	8.2%
<b>Total</b>	<b>6,742</b>	<b>100.0%</b>	<b>7,410</b>	<b>100.0%</b>	<b>7,749</b>	<b>100.0%</b>	<b>7,337</b>	<b>100.0%</b>	<b>7,727</b>	<b>100.0%</b>	<b>7,165</b>	<b>100.0%</b>

% = Percentage of all degrees awarded within the Community College system. Source: IPEDS 2016-2017 Completions survey from System office.

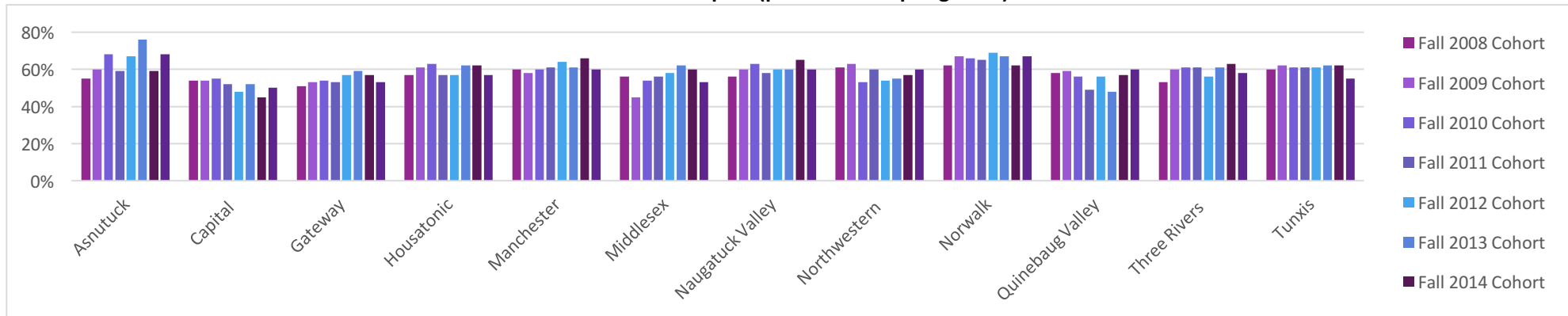


# Integrated Postsecondary Education Data System (IPEDS) Comparison

## First Time, Full-Time Cohort Retention Rates for Undergraduate Students

	Fall 2008 Cohort	Fall 2009 Cohort	Fall 2010 Cohort	Fall 2011 Cohort	Fall 2012 Cohort	Fall 2013 Cohort	Fall 2014 Cohort	Fall 2015 Cohort	One year % change	Fall 2016 Cohort
Asnuntuck	55%	60%	68%	59%	67%	76%	59%	68%	9%	DNA *
Capital	54%	54%	55%	52%	48%	52%	45%	50%	5%	
Gateway	51%	53%	54%	53%	57%	59%	57%	53%	-4%	
<b>Housatonic</b>	<b>57%</b>	<b>61%</b>	<b>63%</b>	<b>57%</b>	<b>57%</b>	<b>62%</b>	<b>62%</b>	<b>57%</b>	<b>-5%</b>	
Manchester	60%	58%	60%	61%	64%	61%	66%	60%	-6%	
Middlesex	56%	45%	54%	56%	58%	62%	60%	53%	-7%	
Naugatuck Valley	56%	60%	63%	58%	60%	60%	65%	60%	-5%	
Northwestern	61%	63%	53%	60%	54%	55%	57%	60%	3%	
Norwalk	62%	67%	66%	65%	69%	67%	62%	67%	5%	
Quinebaug Valley	58%	59%	56%	49%	56%	48%	57%	60%	3%	
Three Rivers	53%	60%	61%	61%	56%	61%	63%	58%	-5%	
Tunxis	60%	62%	61%	61%	61%	62%	62%	55%	-7%	
<b>Lowest</b>	<b>51%</b>	<b>45%</b>	<b>53%</b>	<b>49%</b>	<b>48%</b>	<b>48%</b>	<b>45%</b>	<b>50%</b>	<b>5%</b>	
<b>Highest</b>	<b>62%</b>	<b>67%</b>	<b>68%</b>	<b>65%</b>	<b>69%</b>	<b>76%</b>	<b>66%</b>	<b>68%</b>	<b>2%</b>	

\*DNA = Data for 2016 cohort will be available in Data Feedback 2018 report (published in Spring 2019)



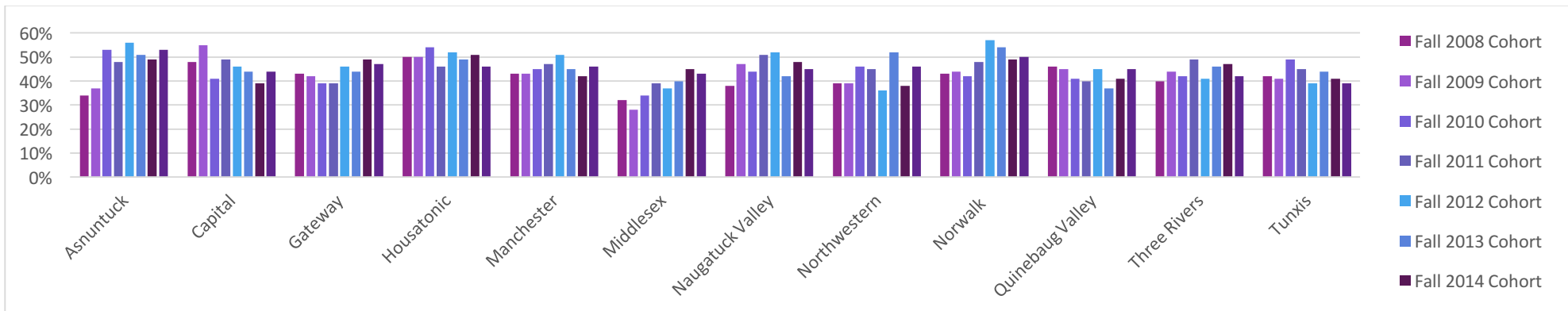


# Integrated Postsecondary Education Data System (IPEDS) Comparison

## First Time, Part-Time Cohort Retention Rates for Undergraduate Students

	Fall 2008 Cohort	Fall 2009 Cohort	Fall 2010 Cohort	Fall 2011 Cohort	Fall 2012 Cohort	Fall 2013 Cohort	Fall 2014 Cohort	Fall 2015 Cohort	One year % change	Fall 2016 Cohort
Asnuntuck	34%	37%	53%	48%	56%	51%	49%	53%	4.00%	DNA *
Capital	48%	55%	41%	49%	46%	44%	39%	44%	5.00%	
Gateway	43%	42%	39%	39%	46%	44%	49%	47%	-2.00%	
<b>Housatonic</b>	<b>50%</b>	<b>50%</b>	<b>54%</b>	<b>46%</b>	<b>52%</b>	<b>49%</b>	<b>51%</b>	<b>46%</b>	<b>-5.00%</b>	
Manchester	43%	43%	45%	47%	51%	45%	42%	46%	4.00%	
Middlesex	32%	28%	34%	39%	37%	40%	45%	43%	-2.00%	
Naugatuck Valley	38%	47%	44%	51%	52%	42%	48%	45%	-3.00%	
Northwestern	39%	39%	46%	45%	36%	52%	38%	46%	8.00%	
Norwalk	43%	44%	42%	48%	57%	54%	49%	50%	1.00%	
Quinebaug Valley	46%	45%	41%	40%	45%	37%	41%	45%	4.00%	
Three Rivers	40%	44%	42%	49%	41%	46%	47%	42%	-5.00%	
Tunxis	42%	41%	49%	45%	39%	44%	41%	39%	-2.00%	
<b>Lowest</b>	<b>32%</b>	<b>28%</b>	<b>34%</b>	<b>39%</b>	<b>36%</b>	<b>37%</b>	<b>38%</b>	<b>39%</b>	<b>1.00%</b>	
<b>Highest</b>	<b>50%</b>	<b>55%</b>	<b>54%</b>	<b>51%</b>	<b>57%</b>	<b>54%</b>	<b>51%</b>	<b>53%</b>	<b>2.00%</b>	

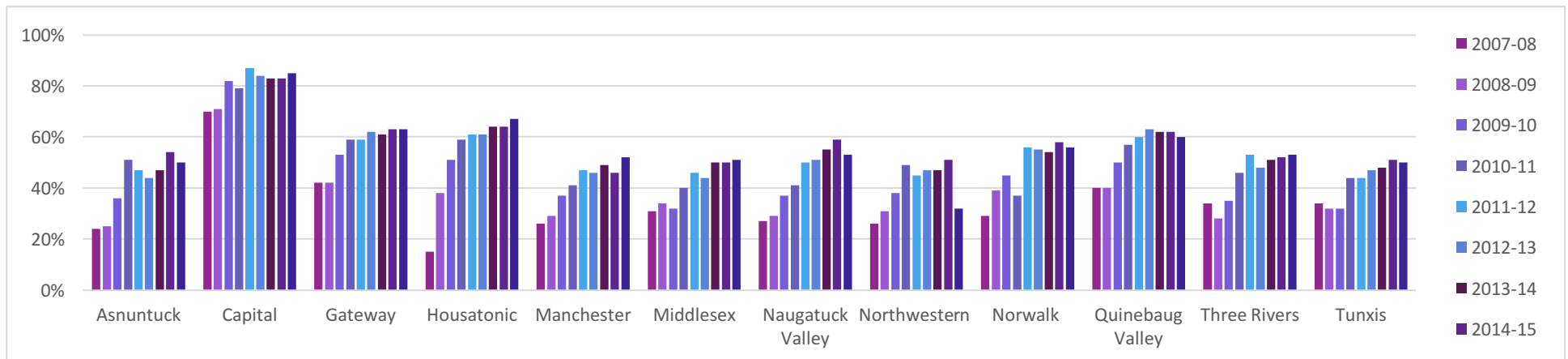
\*DNA = Data for 2016 cohort will be available in Data Feedback 2018 report (published in Spring 2019)



# Integrated Postsecondary Education Data System (IPEDS) Comparison

## Percent of Full-time Students Who Received Pell Grants

	2007-08 Cohort	2008-09 Cohort	2009-10 Cohort	2010-11 Cohort	2011-12 Cohort	2012-13 Cohort	2013-14 Cohort	2014-15 Cohort	2015-16 Cohort
Asnuntuck	24%	25%	36%	51%	47%	44%	47%	54%	50%
Capital	70%	71%	82%	79%	87%	84%	83%	83%	85%
Gateway	42%	42%	53%	59%	59%	62%	61%	63%	63%
<b>Housatonic</b>	<b>15%</b>	<b>38%</b>	<b>51%</b>	<b>59%</b>	<b>61%</b>	<b>61%</b>	<b>64%</b>	<b>64%</b>	<b>67%</b>
Manchester	26%	29%	37%	41%	47%	46%	49%	46%	52%
Middlesex	31%	34%	32%	40%	46%	44%	50%	50%	51%
Naugatuck Valley	27%	29%	37%	41%	50%	51%	55%	59%	53%
Northwestern	26%	31%	38%	49%	45%	47%	47%	51%	32%
Norwalk	29%	39%	45%	37%	56%	55%	54%	58%	56%
Quinebaug Valley	40%	40%	50%	57%	60%	63%	62%	62%	60%
Three Rivers	34%	28%	35%	46%	53%	48%	51%	52%	53%
Tunxis	34%	32%	32%	44%	44%	47%	48%	51%	50%

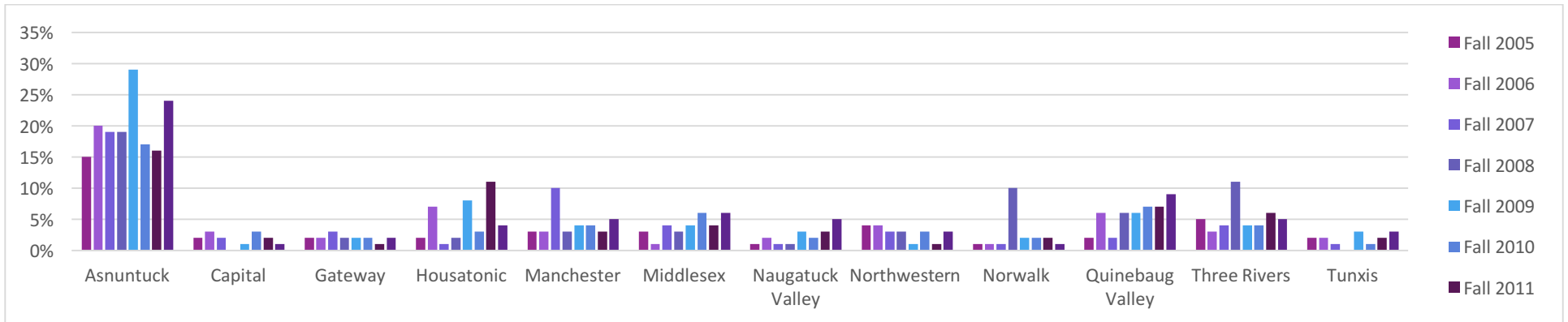


NOTE: Any grant aid above includes grant or scholarship aid from the federal government, state/local government, or the institution. Federal grants include Pell grants and other federal grants. Any loans include federal loans and other loans to students. SOURCE: U.S. Department of Education, National Center for Education Statistics, Integrated Postsecondary Education Data System (IPEDS).

# Integrated Postsecondary Education Data System (IPEDS) Comparison

## Time to Program Completion: First Time, Full Time Cohort Normal time (two years)

	Fall 2005 Cohort	Fall 2006 Cohort	Fall 2007 Cohort	Fall 2008 Cohort	Fall 2009 Cohort	Fall 2010 Cohort	Fall 2011 Cohort	Fall 2012 Cohort	One year % change
Asnuntuck	15%	20%	19%	19%	29%	17%	16%	24%	8%
Capital	2%	3%	2%	0%	1%	3%	2%	1%	-1%
Gateway	2%	2%	3%	2%	2%	2%	1%	2%	1%
<b>Housatonic</b>	<b>2%</b>	<b>7%</b>	<b>1%</b>	<b>2%</b>	<b>8%</b>	<b>3%</b>	<b>11%</b>	<b>4%</b>	<b>-7%</b>
Manchester	3%	3%	10%	3%	4%	4%	3%	5%	2%
Middlesex	3%	1%	4%	3%	4%	6%	4%	6%	2%
Naugatuck Valley	1%	2%	1%	1%	3%	2%	3%	5%	2%
Northwestern	4%	4%	3%	3%	1%	3%	1%	3%	2%
Norwalk	1%	1%	1%	10%	2%	2%	2%	1%	-1%
Quinebaug Valley	2%	6%	2%	6%	6%	7%	7%	9%	2%
Three Rivers	5%	3%	4%	11%	4%	4%	6%	5%	-1%
Tunxis	2%	2%	1%	0%	3%	1%	2%	3%	1%



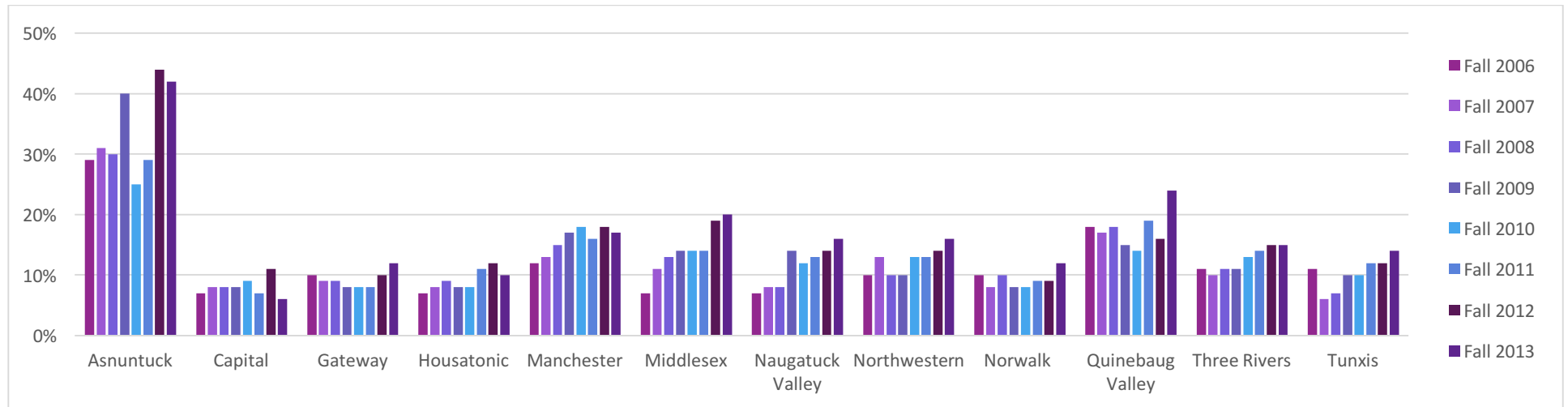
NOTE: The 150% graduation rate is the Student Right-to-Know (SRK) rates; the Normal time and 200% rates are calculated using the same methodology. SOURCE: U.S. Department of Education, National Center for Education Statistics, Integrated Postsecondary Education Data System (IPEDS): Graduation Rates component. As reported in the 2017 Data Feedback Report.

# Integrated Postsecondary Education Data System (IPEDS) Comparison

Time to Program Completion: First Time, Full Time Cohort 150% of Normal Time (three years)

	Fall 2006 Cohort	Fall 2007 Cohort	Fall 2008 Cohort	Fall 2009 Cohort	Fall 2010 Cohort	Fall 2011 Cohort	Fall 2012 Cohort	Fall 2013 Cohort	One year % change	Fall 2014 Cohort
Asnuntuck	29%	31%	30%	40%	25%	29%	44%	42%	-2%	DNA*
Capital	7%	8%	8%	8%	9%	7%	11%	6%	-5%	
Gateway	10%	9%	9%	8%	8%	8%	10%	12%	2%	
<b>Housatonic</b>	<b>7%</b>	<b>8%</b>	<b>9%</b>	<b>8%</b>	<b>8%</b>	<b>11%</b>	<b>12%</b>	<b>10%</b>	<b>-2%</b>	
Manchester	12%	13%	15%	17%	18%	16%	18%	17%	-1%	
Middlesex	7%	11%	13%	14%	14%	14%	19%	20%	1%	
Naugatuck Valley	7%	8%	8%	14%	12%	13%	14%	16%	2%	
Northwestern	10%	13%	10%	10%	13%	13%	14%	16%	2%	
Norwalk	10%	8%	10%	8%	8%	9%	9%	12%	3%	
Quinebaug Valley	18%	17%	18%	15%	14%	19%	16%	24%	8%	
Three Rivers	11%	10%	11%	11%	13%	14%	15%	15%	0%	
Tunxis	11%	6%	7%	10%	10%	12%	12%	14%	2%	

\*DNA = Data for 2014 cohort will be available in Data Feedback 2018 report (published in Spring 2019)

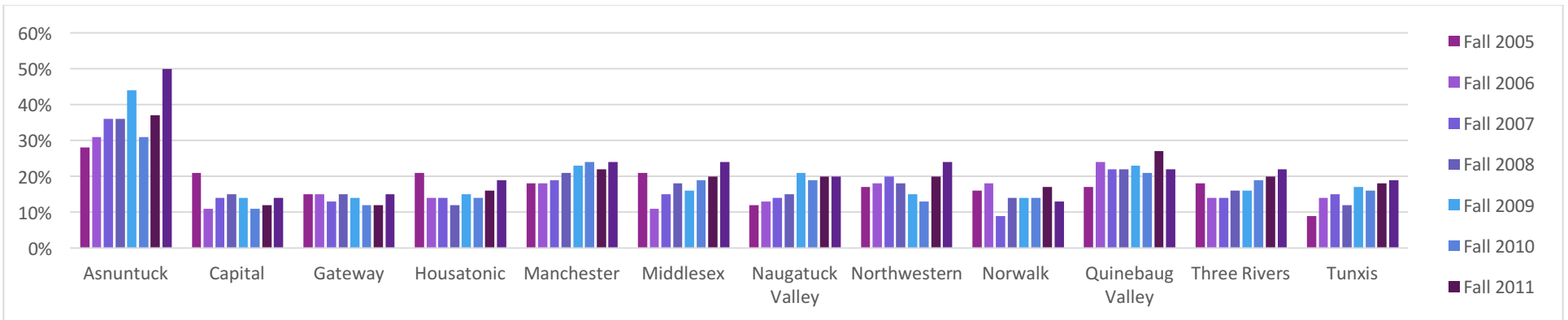


# Integrated Postsecondary Education Data System (IPEDS) Comparison

## Time to Program Completion: First Time, Full Time Cohort 200% of Normal Time (four years)

	Fall 2005 Cohort	Fall 2006 Cohort	Fall 2007 Cohort	Fall 2008 Cohort	Fall 2009 Cohort	Fall 2010 Cohort	Fall 2011 Cohort	Fall 2012 Cohort	One year % change	Fall 2013 Cohort
Asnuntuck	28%	31%	36%	36%	44%	31%	37%	50%	13%	<b>DNA *</b>
Capital	21%	11%	14%	15%	14%	11%	12%	14%	2%	
Gateway	15%	15%	13%	15%	14%	12%	12%	15%	3%	
<b>Housatonic</b>	<b>21%</b>	<b>14%</b>	<b>14%</b>	<b>12%</b>	<b>15%</b>	<b>14%</b>	<b>16%</b>	<b>19%</b>	<b>3%</b>	
Manchester	18%	18%	19%	21%	23%	24%	22%	24%	2%	
Middlesex	21%	11%	15%	18%	16%	19%	20%	24%	4%	
Naugatuck Valley	12%	13%	14%	15%	21%	19%	20%	20%	0%	
Northwestern	17%	18%	20%	18%	15%	13%	20%	24%	4%	
Norwalk	16%	18%	9%	14%	14%	14%	17%	13%	-4%	
Quinebaug Valley	17%	24%	22%	22%	23%	21%	27%	22%	-5%	
Three Rivers	18%	14%	14%	16%	16%	19%	20%	22%	2%	
Tunxis	9%	14%	15%	12%	17%	16%	18%	19%	1%	

\*DNA = Data for 2013 cohort will be available in Data Feedback 2018 report (published in Spring 2019)



NOTE: The 150% graduation rate is the Student Right-to-Know (SRK) rates; the Normal time and 200% rates are calculated using the same methodology. SOURCE: U.S. Department of Education, National Center for Education Statistics, Integrated Postsecondary Education Data System (IPEDS): Graduation Rates component. As reported in the 2016 Data Feedback Report.