

HOUSATONIC COMMUNITY COLLEGE

Graduation Report 2015-2016
A Ten Year Trend Analysis



Table of Contents

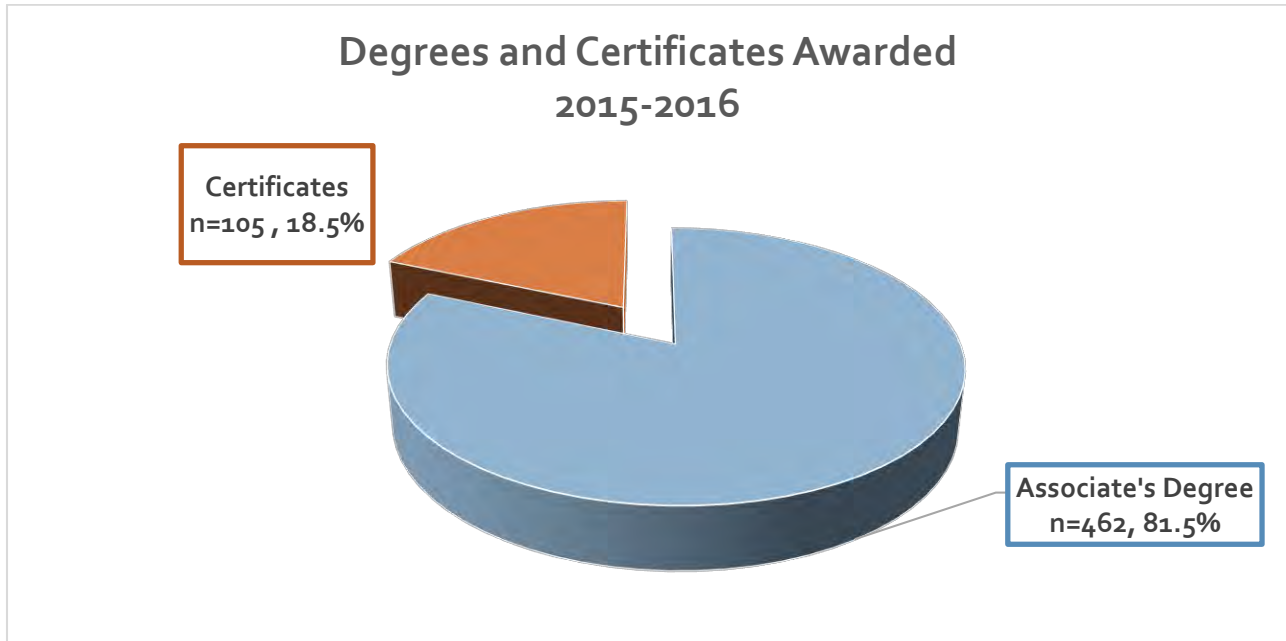
Introduction.....	2
Degrees and Certificates Awarded 2015-16	2
Degrees and Certificates Awarded (10 Years)	3
Degrees and Certificates Awarded by Gender (10 Years)	5
Age of Graduates	7
Degrees and Certificates Awarded by Student Ethnicity/Race (10 Years)	8
Degrees and Certificates Awarded by Student Residence (10 Years)	11
Degrees and Certificates Awarded by Local High School Graduates in HCC Service Areas (10 Years)	14
2015-16 Graduate GPA	15
Graduation by Major	16
Advisors by Students with Degree/Certificates Awarded	21
Term to Degree	22
Additional Information on Graduation Rates of Community Colleges	23

Extract Dates

2006-07	10/19/2015	2011-12	5/15/2015
2007-08	6/16/2015	2012-13	5/15/2015
2008-09	6/16/2015	2013-14	5/15/2015
2009-10	6/16/2015	2014-15	6/16/2015
2010-11	5/17/2015	2015-16	6/09/2016

Introduction

In this report you will find a ten year trend of the characteristics and demographics of the graduates of Housatonic Community College. This past year (academic year 2015-16) five-hundred-sixty-seven degrees were awarded to five-hundred-nineteen graduates. Forty-eight (n=48) students earned two degrees/certificates. *Please note that the academic year is defined as students who earned a degree(s) and/or certificate(s) in summer 2015, fall 2015, and/or spring 2016. * The number of degrees and certificates awarded showed a decrease of 5.7% (n=-34) from the previous 2014-15 academic year. The percentage of certificates and degrees awarded have remained stable over last year.

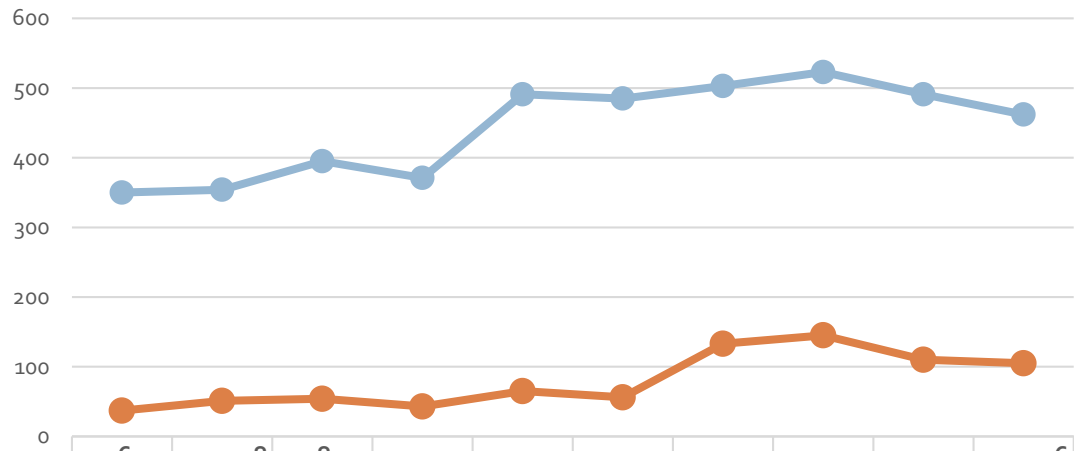


Above is a graph showing the breakdown of certificates and degrees awarded in 2015-16.

Housatonic Community College - Graduation Demographics

	2005-06	2006-07	2007-08	2008-09	2009-10	2010-11	2011-12	2012-13	2013-14	2014-15	2015-16
Total Certificates and Degrees Awarded	375	387	405	449	414	556	541	636	668	601	567
Associates Degrees	336	350	354	395	371	491	485	503	523	491	462
Certificates	39	37	51	54	43	65	56	133	145	110	105
# of Students Graduated	364	367	383	425	391	518	499	569	592	557	519

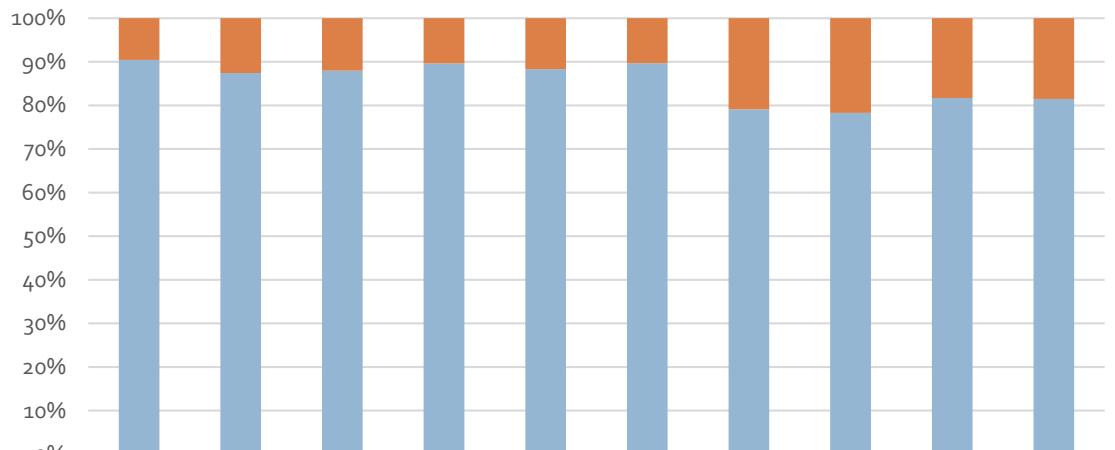
Degrees and Certificates Awarded (10 Years)



	2006-07	2007-08	2008-09	2009-10	2010-11	2011-12	2012-13	2013-14	2014-15	2015-16
Associate Degree	350	354	395	371	491	485	503	523	491	462
Certificates	37	51	54	43	65	56	133	145	110	105

The degrees and certificates awarded in 2015-16 represent an increase of 46.5% (n=180) over the last ten year period at HCC.

Percentage of Degrees and Certificate Awarded



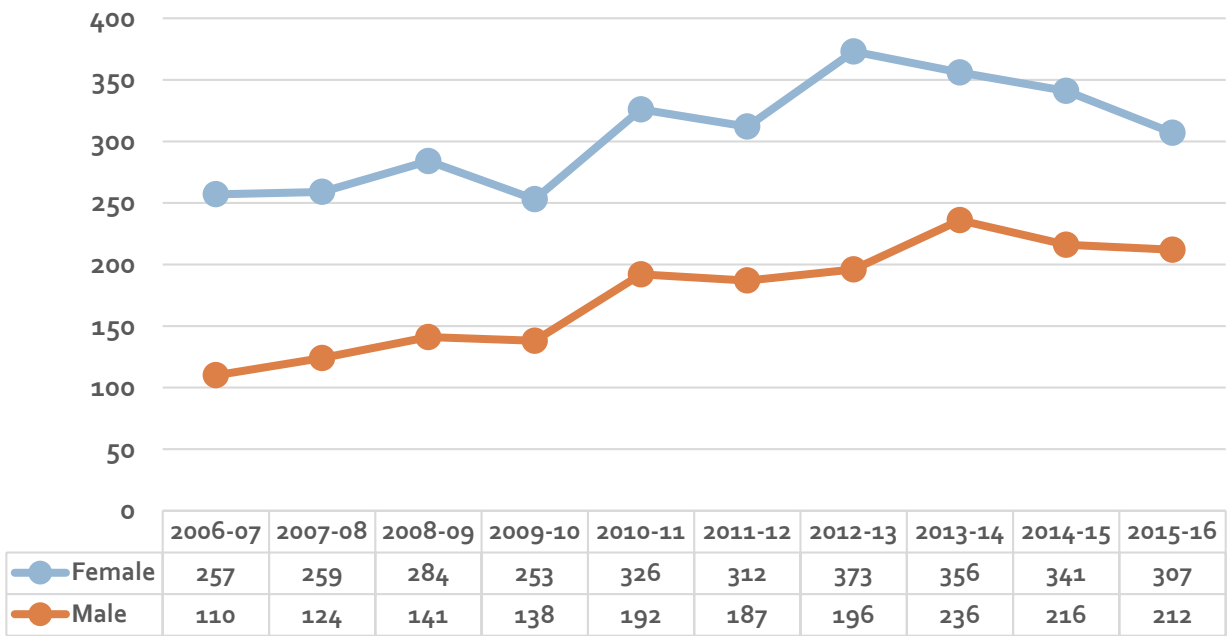
	2006-07	2007-08	2008-09	2009-10	2010-11	2011-12	2012-13	2013-14	2014-15	2015-16
Certificates	9.6%	12.6%	12.0%	10.4%	11.7%	10.4%	20.9%	21.7%	18.3%	18.5%
Associate Degree	90.4%	87.4%	88.0%	89.6%	88.3%	89.6%	79.1%	78.3%	81.7%	81.5%

Degrees/Certificates Awarded to Graduates at Housatonic Community College

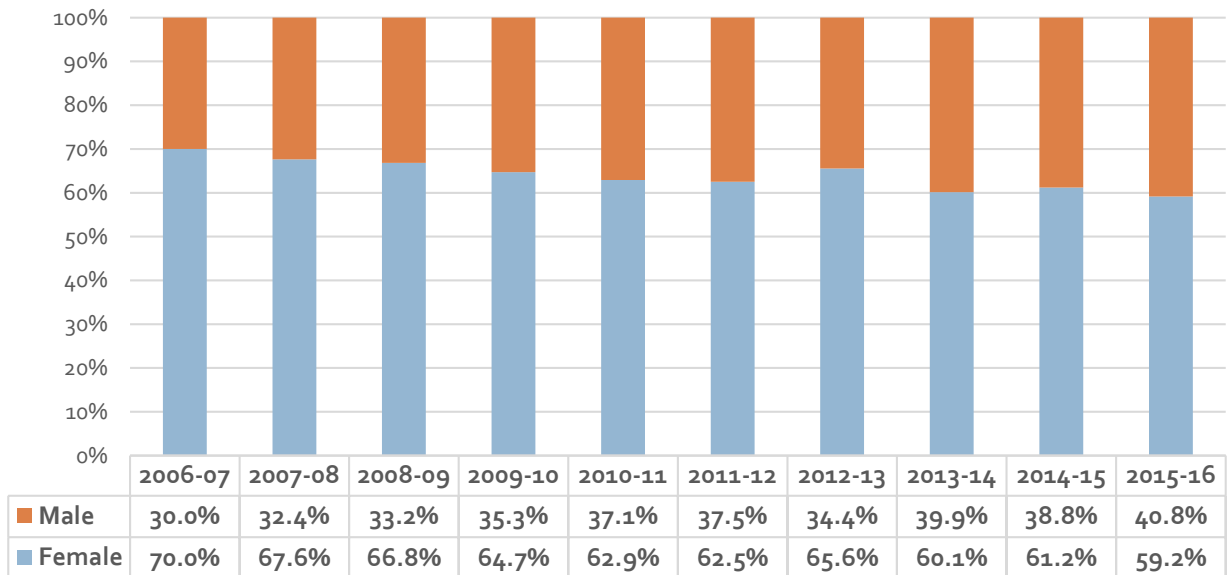
Academic Year	# Associate's Degrees	% Change from Previous Year	# Certificates	% Change from Previous Year	Total Degrees	% Change from Previous Year
2015-16	462	-5.9%	105	-4.5%	567	-5.7%
2014-15	491	-6.1%	110	-24.1%	601	-10.0%
2013-14	523	4.0%	145	9.0%	668	5.0%
2012-13	503	3.7%	133	137.5%	636	17.6%
2011-12	485	-1.2%	56	-13.8%	541	-2.7%
2010-11	491	32.3%	65	51.2%	556	34.3%
2009-10	371	-6.1%	43	-20.4%	414	-7.8%
2008-09	395	11.6%	54	5.9%	449	10.9%
2007-08	354	1.1%	51	37.8%	405	4.7%
2006-07	350	4.2%	37	-5.1%	387	3.2%

The number of certificates that have been awarded in the past ten years have increased faster (183%) than Associate degrees awarded (32.0%).

Degrees and Certificates Awarded by Gender (10 Years)



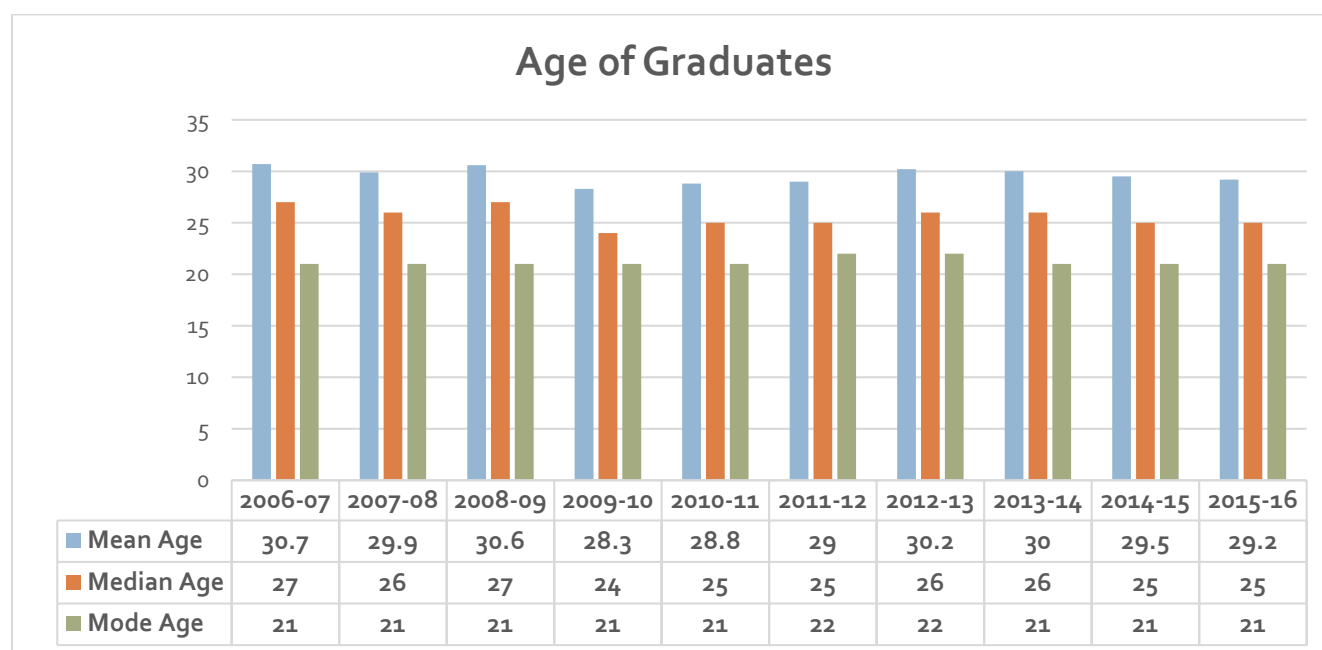
Percentage of Degrees and Certificates Awarded by Gender



The number of degrees and certificates awarded both males and females in 2015-16 represented an increase of 19.5% (n=50) in females and an increase of 92.7% (n=102) in males over the last ten year period at HCC. The proportion of the female graduating classes have declined over the past ten years from 66.4% to 54.1% while the proportion of males in the graduating classes have increased from 28.4% to 37.4%.

Male and Female Graduates at Housatonic Community College

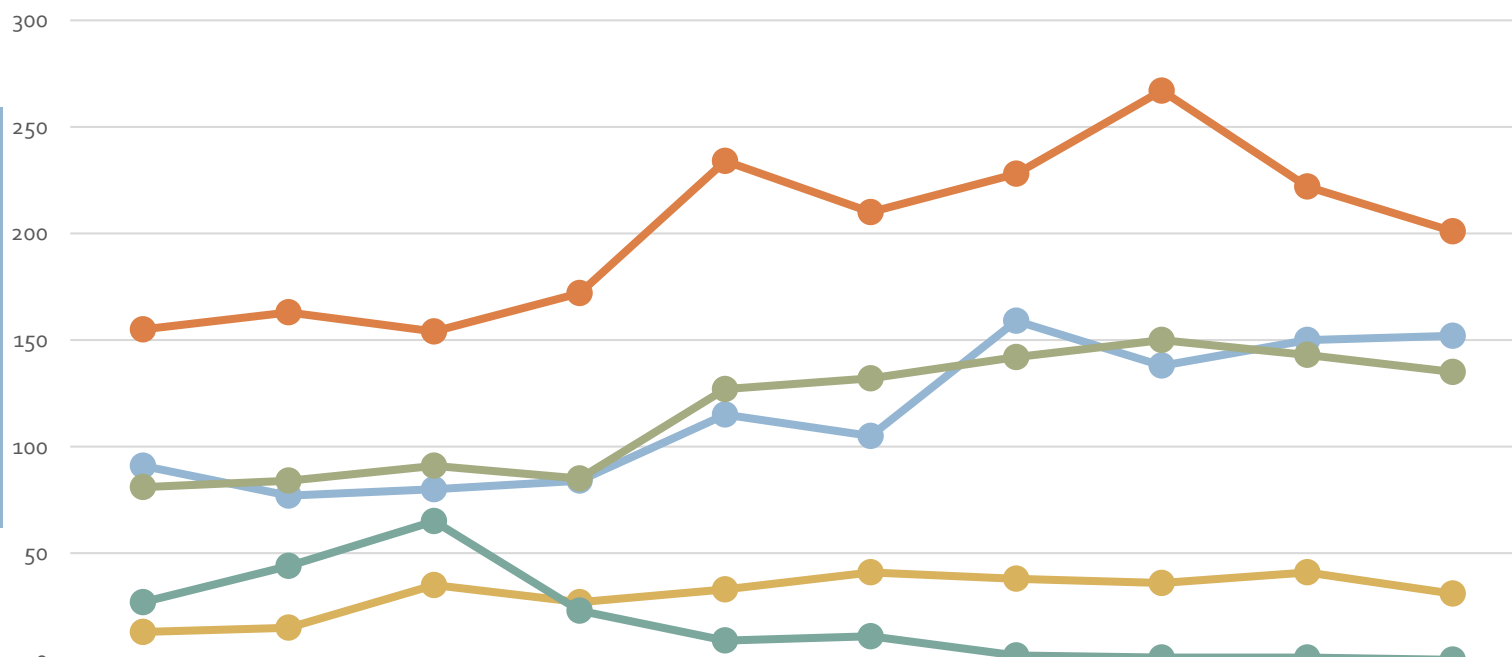
Academic Year	# Females	% Change from Previous Year	# Males	% Change from Previous Year
2015-16	307	-10.0%	212	-1.9%
2014-15	341	-4.2%	216	-8.5%
2013-14	356	-4.6%	236	20.4%
2012-13	373	19.6%	196	4.8%
2011-12	312	-4.3%	187	-2.6%
2010-11	326	28.9%	192	39.1%
2009-10	253	-10.9%	138	-2.1%
2008-09	284	9.7%	141	13.7%
2007-08	259	0.8%	124	12.7%
2006-07	257	-5.4%	110	15.5%



The mean age is not the best representation for reporting, but for the sake of consistency it is shown above.

The mean age of the graduates has decreased by 4.9% (n=-1.5) within the past 10 years. The median age of graduates has also decreased by 7.4% (n=-2) within the past 10 years and the mode age of the graduates stayed stable within the past 10 years at 21.

Degrees and Certificates Awarded by Student Ethnicity/Race (10 Years)



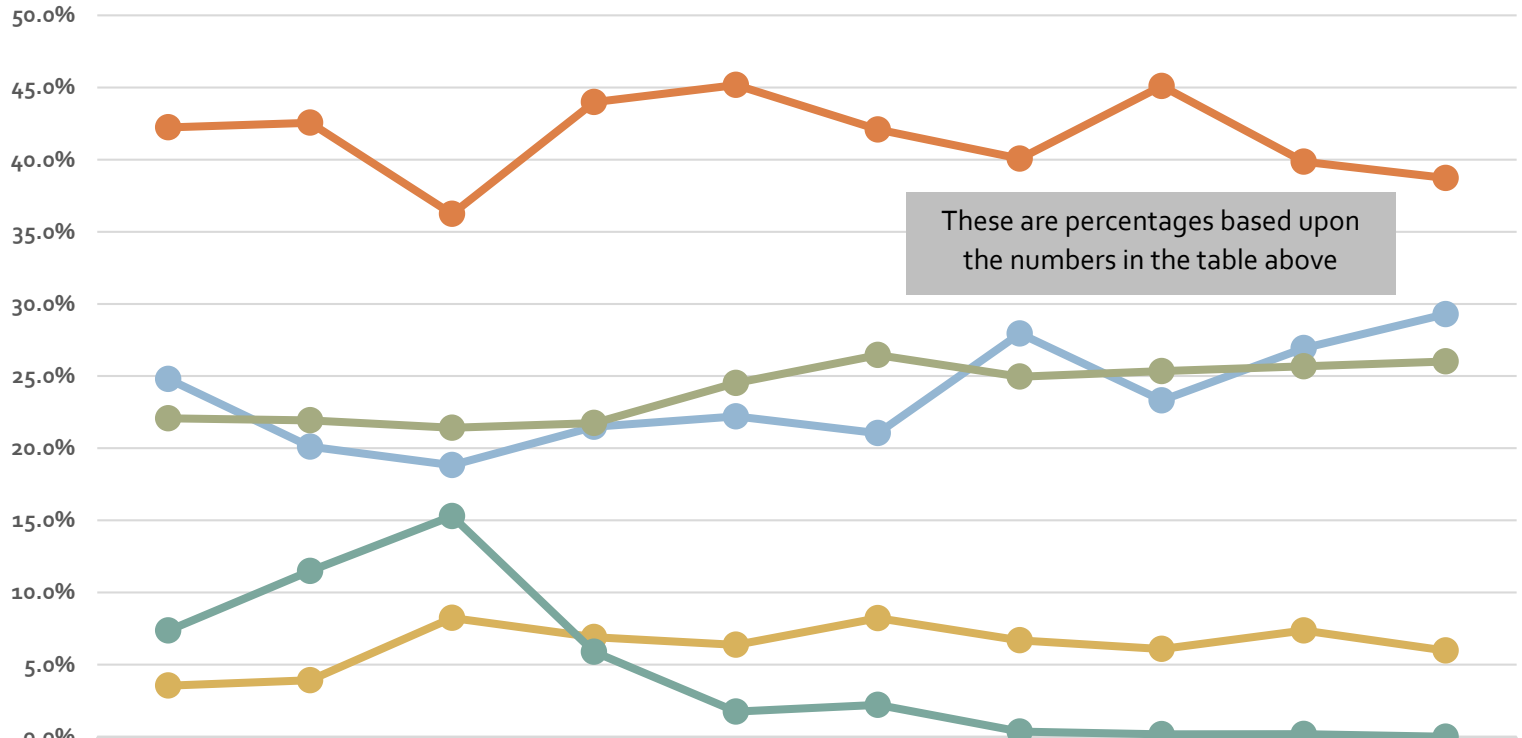
Other*: Includes Asian, Native American, Alaskan Native, Native Hawaiian, Pacific Islander, and Multiple Races.

In 2015-16:
 Asian: 17
 Nat. Hawaiian/Pacific Islander: 1
 Multiple Races: 13

	2006-07	2007-08	2008-09	2009-10	2010-11	2011-12	2012-13	2013-14	2014-15	2015-16
Black	91	77	80	84	115	105	159	138	150	152
White	155	163	154	172	234	210	228	267	222	201
Hispanic	81	84	91	85	127	132	142	150	143	135
Other*	13	15	35	27	33	41	38	36	41	31
Missing, Chose Not to Respond	27	44	65	23	9	11	2	1	1	0

The number of graduates who identify themselves as white have increased by 29.7% (n=46) over the last 10 years. The number of graduates who identify as Black have increased by 67% (n=61) over the last 10 years. The number of graduate who identify as Hispanic have increased by 66.7% (n=54) over the last 10 years. The Other graduates (consisting of graduates who identify as Asian, Native American, Alaskan Native, Native Hawaiian, Pacific Islander and/or are Multi-Race) have increased by 138.5% (n=18) over the last 10 years. Starting in 2009 efforts to obtain every student’s race and ethnicity have been made in order to gain accurate information about students. There were no graduates who chose to not respond or were missing a response this academic year (2015-16).

Percentage of Degrees and Certificates Awarded by Student Ethnicity/Race



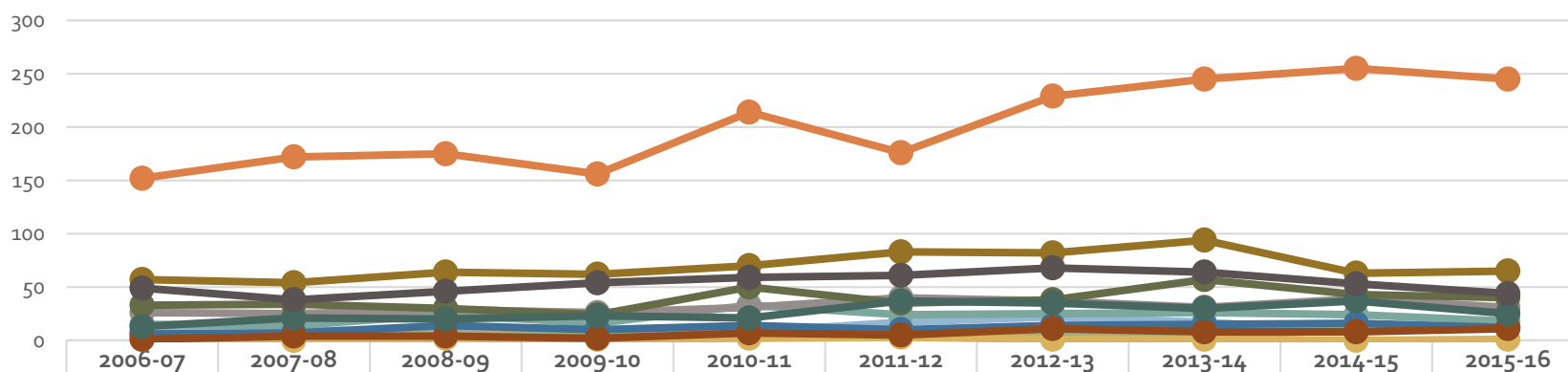
Other*: Includes Asian, Native American, Alaskan Native, Native Hawaiian, Pacific Islander, and Multiple Races.

	2006-07	2007-08	2008-09	2009-10	2010-11	2011-12	2012-13	2013-14	2014-15	2015-16
Black	24.8%	20.1%	18.8%	21.5%	22.2%	21.0%	27.9%	23.3%	26.9%	29.3%
White	42.2%	42.6%	36.2%	44.0%	45.2%	42.1%	40.1%	45.1%	39.9%	38.7%
Hispanic	22.1%	21.9%	21.4%	21.7%	24.5%	26.5%	25.0%	25.3%	25.7%	26.0%
Other*	3.5%	3.9%	8.2%	6.9%	6.4%	8.2%	6.7%	6.1%	7.4%	6.0%
Missing, Chose Not to Respond	7.4%	11.5%	15.3%	5.9%	1.7%	2.2%	0.4%	0.2%	0.2%	0.0%

Race/Ethnicity of Graduates at Housatonic Community College

Academic Year	# Black	% Change from Previous Year	# White	% Change from Previous Year	# Hispanic	% Change from Previous Year	# Other	% Change from Previous Year	# Missing/Chose Not to Respond	% Change from Previous Year
2015-16	152	1.3%	201	-9.5%	135	-5.6%	31	-24.4%	0	-100.0%
2014-15	150	8.7%	222	-16.9%	143	-4.7%	41	13.9%	1	0.0%
2013-14	138	-13.2%	267	17.1%	150	5.6%	36	-5.3%	1	-50.0%
2012-13	159	51.4%	228	8.6%	142	7.6%	38	-7.3%	2	-81.8%
2011-12	105	-8.7%	210	-10.3%	132	3.9%	41	24.2%	11	22.2%
2010-11	115	36.9%	234	36.0%	127	49.4%	33	22.2%	9	-60.9%
2009-10	84	5.0%	172	11.7%	85	-6.6%	27	-22.9%	23	-64.6%
2008-09	80	3.9%	154	-5.5%	91	8.3%	35	133.3%	65	47.7%
2007-08	77	-15.4%	163	5.2%	84	3.7%	15	15.4%	44	63.0%
2006-07	91	-9.0%	155	-7.7%	81	20.9%	13	44.4%	27	35.0%

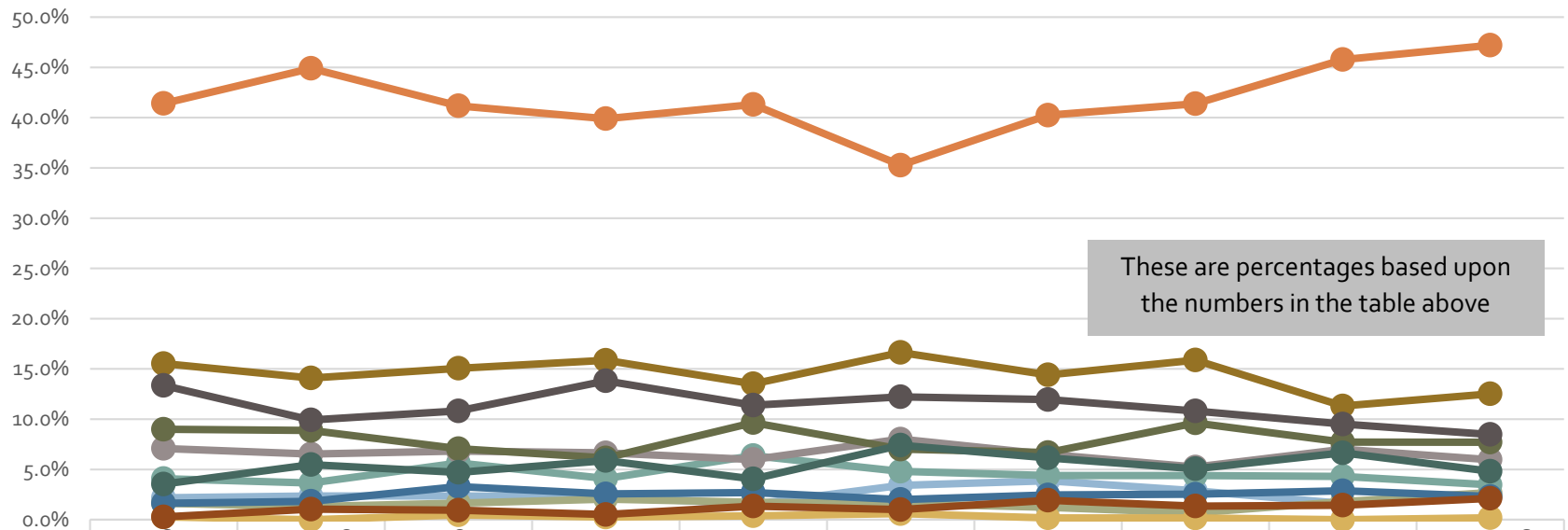
Degrees and Certificates Awarded by Student Residence (10 Years)



	2006-07	2007-08	2008-09	2009-10	2010-11	2011-12	2012-13	2013-14	2014-15	2015-16
Ansonia	8	9	10	9	8	17	22	17	9	13
Bridgeport	152	172	175	156	214	176	229	245	255	245
Derby	6	5	7	8	9	8	7	4	10	14
Easton	1	0	2	1	2	3	1	1	0	1
Fairfield	15	14	24	16	33	24	25	26	24	18
Milford	26	25	29	26	31	40	37	31	39	31
Monroe	6	7	14	10	14	10	14	15	16	12
Seymour	1	4	4	2	7	5	11	8	8	11
Shelton	33	34	30	24	50	35	38	57	43	40
Stratford	57	54	64	62	70	83	82	94	63	65
Trumbull	13	21	20	23	21	37	35	30	37	25
Other Towns	49	38	46	54	59	61	68	64	53	44

Majority of graduates live in the Bridgeport area which has increased by 61.2% (n=93) over the past 10 years. The number of Ansonia residents has increased by 62.5% (n=5) over the past 10 years. The number of Derby residents has increased by 133.3% (n=8) over the past 10 years. The number of Easton residents has stayed the same (n=1). The number of Fairfield residents has increased by 20% (n=3) over the past 10 years. The number of Milford residents has increased by 19.2% (n=5) over the past 10 years. The number of Monroe residents has increased by 100% (n=6) over the last 10 years. The number of Seymour residents has increased by 1000% (n=10) over the past 10 years. The number of Shelton residents has increased by 21.2% (n=7) over the past 10 years. The number of Stratford residents has increased by 14% (n=8) over the past 10 years. The number of Trumbull residents has increased by 92.3% (n=12) over the past 10 years. The number of residents from outside the HCC service area has decreased by 10.2% (n=-5) over the past 10 years.

Percentage of Degrees and Certificates Awarded by Student Residence



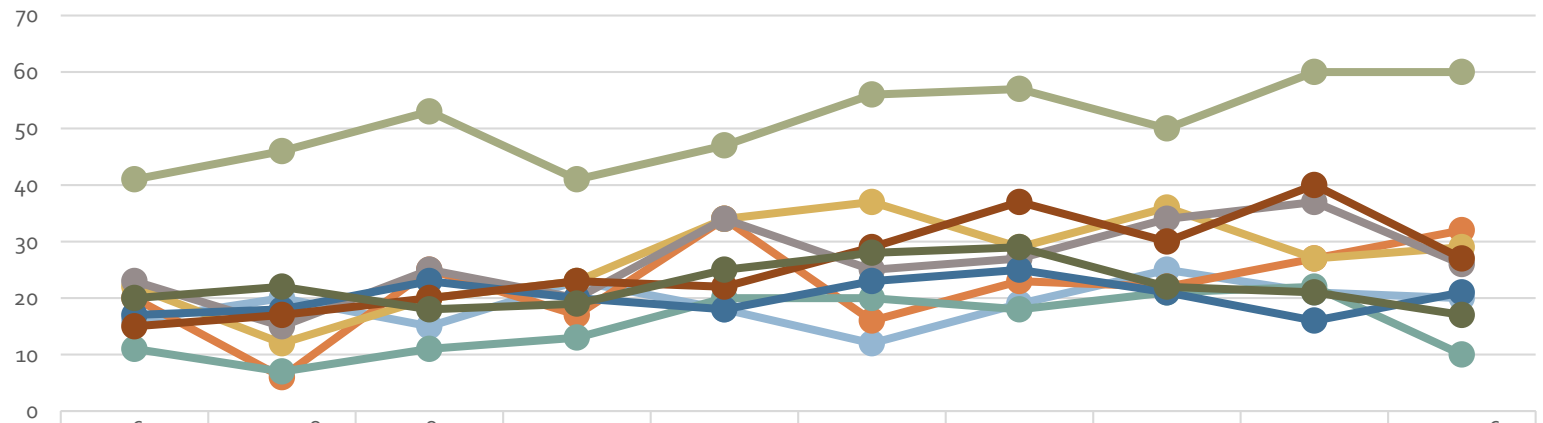
	2006-07	2007-08	2008-09	2009-10	2010-11	2011-12	2012-13	2013-14	2014-15	2015-16
— Ansonia	2.2%	2.3%	2.4%	2.3%	1.5%	3.4%	3.9%	2.9%	1.6%	2.5%
— Bridgeport	41.4%	44.9%	41.2%	39.9%	41.3%	35.3%	40.2%	41.4%	45.8%	47.2%
— Derby	1.6%	1.3%	1.6%	2.0%	1.7%	1.6%	1.2%	0.7%	1.8%	2.7%
— Easton	0.3%	0.0%	0.5%	0.3%	0.4%	0.6%	0.2%	0.2%	0.0%	0.2%
— Fairfield	4.1%	3.7%	5.6%	4.1%	6.4%	4.8%	4.4%	4.4%	4.3%	3.5%
— Milford	7.1%	6.5%	6.8%	6.6%	6.0%	8.0%	6.5%	5.2%	7.0%	6.0%
— Monroe	1.6%	1.8%	3.3%	2.6%	2.7%	2.0%	2.5%	2.5%	2.9%	2.3%
— Seymour	0.3%	1.0%	0.9%	0.5%	1.4%	1.0%	1.9%	1.4%	1.4%	2.1%
— Shelton	9.0%	8.9%	7.1%	6.1%	9.7%	7.0%	6.7%	9.6%	7.7%	7.7%
— Stratford	15.5%	14.1%	15.1%	15.9%	13.5%	16.6%	14.4%	15.9%	11.3%	12.5%
— Trumbull	3.5%	5.5%	4.7%	5.9%	4.1%	7.4%	6.2%	5.1%	6.6%	4.8%
— Other Towns	13.4%	9.9%	10.8%	13.8%	11.4%	12.2%	12.0%	10.8%	9.5%	8.5%

The number of graduates residing in Bridgeport has increased the most as percentage of graduating class. Stratford and Shelton residents which make up another large part of residents of graduates have decreased as a percentage of the graduating classes.

Residency of Graduates at Housatonic Community College

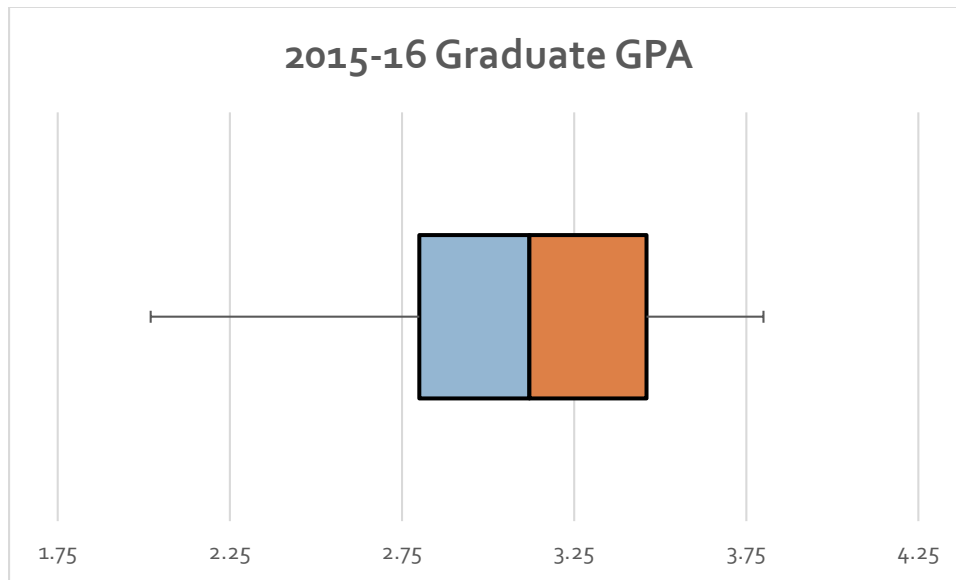
	2006-07		2007-08		2008-09		2009-10		2010-11		2011-12		2012-13		2013-14		2014-15		2015-16	
	#	% Diff. from Previous Year	#	% Diff. from Previous Year	#	% Diff. from Previous Year	#	% Diff. from Previous Year	#	% Diff. from Previous Year	#	% Diff. from Previous Year	#	% Diff. from Previous Year	#	% Diff. from Previous Year	#	% Diff. from Previous Year	#	% Diff. from Previous Year
Ansonia	8	14.3%	9	12.5%	10	11.1%	9	-10.0%	8	-11.1%	17	112.5%	22	29.4%	17	-22.7%	9	-47.1%	13	44.4%
Bridgeport	152	2.7%	172	13.2%	175	1.7%	156	-10.9%	214	37.2%	176	-17.8%	229	30.1%	245	7.0%	255	4.1%	245	-3.9%
Derby	6	100.0%	5	-16.7%	7	40.0%	8	14.3%	9	12.5%	8	-11.1%	7	-12.5%	4	-42.9%	10	150.0%	14	40.0%
Easton	1	100.0%	0	-100.0%	2	200.0%	1	-50.0%	2	100.0%	3	50.0%	1	-66.7%	1	0.0%	0	-100.0%	1	100.0%
Fairfield	15	15.4%	14	-6.7%	24	71.4%	16	-33.3%	33	106.3%	24	-27.3%	25	4.2%	26	4.0%	24	-7.7%	18	-25.0%
Milford	26	-10.3%	25	-3.8%	29	16.0%	26	-10.3%	31	19.2%	40	29.0%	37	-7.5%	31	-16.2%	39	25.8%	31	-20.5%
Monroe	6	-45.5%	7	16.7%	14	100.0%	10	-28.6%	14	40.0%	10	-28.6%	14	40.0%	15	7.1%	16	6.7%	12	-25.0%
Seymour	1	-85.7%	4	300.0%	4	0.0%	2	-50.0%	7	250.0%	5	-28.6%	11	120.0%	8	-27.3%	8	0.0%	11	37.5%
Shelton	33	-17.5%	34	3.0%	30	-11.8%	24	-20.0%	50	108.3%	35	-30.0%	38	8.6%	57	50.0%	43	-24.6%	40	-7.0%
Stratford	57	26.7%	54	-5.3%	64	18.5%	62	-3.1%	70	12.9%	83	18.6%	82	-1.2%	94	14.6%	63	-33.0%	65	3.2%
Trumbull	13	-23.5%	21	61.5%	20	-4.8%	23	15.0%	21	-8.7%	37	76.2%	35	-5.4%	30	-14.3%	37	23.3%	25	-32.4%
Other Towns	49	11.4%	38	-22.4%	46	21.1%	54	17.4%	59	9.3%	61	3.4%	68	11.5%	64	-5.9%	53	-17.2%	44	-17.0%
In-Service Area	318	-0.6%	345	8.5%	379	9.9%	337	-11.1%	459	36.2%	438	-4.6%	501	14.4%	528	5.4%	504	-4.5%	475	-5.8%
Out-Service Area	49	11.4%	38	-22.4%	46	21.1%	54	17.4%	59	9.3%	61	3.4%	68	11.5%	64	-5.9%	53	-17.2%	44	-17.0%
Total	367	0.8%	383	4.4%	425	11.0%	391	-8.0%	518	32.5%	499	-3.7%	569	14.0%	592	4.0%	557	-5.9%	519	-6.8%

Degrees and Certificates Awarded by Local High School Graduates in HCC Service Areas (10 Years)



	2006-07	2007-08	2008-09	2009-10	2010-11	2011-12	2012-13	2013-14	2014-15	2015-16
● Bassick High School	16	20	15	23	18	12	19	25	21	20
● Bullard-Haven High School	20	6	25	17	34	16	23	22	27	32
● Central Magnet High School	41	46	53	41	47	56	57	50	60	60
● F. Scott Bunnell High School	22	12	20	23	34	37	29	36	27	29
● Jonathon Law	11	7	11	13	20	20	18	21	22	10
● Shelton High School	23	15	25	20	34	25	27	34	37	26
● Stratford High School	17	18	23	20	18	23	25	21	16	21
● Trumbull High School	15	17	20	23	22	29	37	30	40	27
● Warren Harding High School	20	22	18	19	25	28	29	22	21	17

Within the HCC service area, majority of graduates earned a high school diploma from Central Magnet High School. The number of students increased by 46.3% (n=19) over the past 10 years. The number of graduates who graduated from Bassick High School has increased by 25% (n=4) over the past 10 years. The number of graduates who graduated from Bullard-Haven HS has increased by 60% (n=12) over the past 10 years. The number of graduates who graduated from F. Scott Bunnell HS has increased by 31.8% (n=7) over the past 10 years. The number of graduates who graduated from Jonathon Law has decreased by 9.1% (n=-1) over the last 10 years. The number of graduates who graduated from Shelton HS has increased by 13% (n=3) over the past 10 years. The number of graduates who graduated from Stratford HS has increased by 23% (n=4). The number of graduates who graduated from Trumbull HS has increased by 80% (n=12) over the past 10 years. The number of students who graduated from Warren Harding HS decreased by 15%, (n=3) within the past 10 years.



	2006-07	2007-08	2008-09	2009-10	2010-11	2011-12	2012-13	2013-14	2014-15	2015-16
Mean GPA	3.17	3.17	3.12	3.16	3.16	3.14	3.13	3.16	3.18	3.12
Median GPA	3.14	3.16	3.15	3.15	3.16	3.16	3.15	3.18	3.2	3.12

The boxplot represents the 5 number summary of the 2015-16 graduating GPA. On the far left where the horizontal line ends represents the lowest GPA of the graduating class at (n=2.02) which increased 4.7% (n=0.09) in the past 10 years. The left side of the box represents the first 25% (Quartile 1) of the graduate GPA at (n=2.8) which decreased by 2.1% (n=-0.06) in the past 10 years. The middle line in the box represents the median GPA at (n=3.12) which decreased by 0.6% (n=-0.02) in the past 10 years. The right side of the box represents the first 75% (Quartile 3) of the graduate GPA at (n=3.46), which decreased by 3.1% (n=-0.11) in the past 10 years. Where the horizontal line ends on the right represents the highest GPA of the graduating class at (n=4.00) which has remained constant in the past 10 years.

Housatonic Community College – Graduation by Major

			2006-07	2007-08	2008-09	2009-10	2010-11	2011-12	2012-13	2013-14	2014-15	2015-16	%Difference Previous Year	%Difference 10 Years
EA03	Accounting	AS	18	25	35	28	35	30	31	35	34	27	-20.6%	50.0%
EA06	Accounting Assistant	AS	3	1	1	-	-	-	-	-	-	-	0.0%	-300.0%
EA61	Accounting : Small Business Option	AS	-	-	-	1	-	-	2	2	4	-	-400.0%	0.0%
EJ80	Accounting for Small Business	CERT	-	-	-	-	1	2	2	1	-	-	0.0%	0.0%
EJ05	Accounting	CERT	3	1	2	3	1	-	-	-	-	-	0.0%	-300.0%
Total Accounting Graduate Degrees Awarded			24	27	38	32	37	32	35	38	38	27	-28.9%	12.5%

			2006-07	2007-08	2008-09	2009-10	2010-11	2011-12	2012-13	2013-14	2014-15	2015-16	%Difference Previous Year	%Difference 10 Years
EB20	Fine Arts: Art	AA	3	3	4	1	7	7	3	5	8	6	-25.0%	100.0%
EB33	Graphic Design	AS	7	6	7	4	11	14	11	11	7	15	114.3%	114.3%
EB59	Graphic Design: Computer Graphics	AS	7	3	4	3	1	-	1	-	-	-	0.0%	-700.0%
EJ91	Graphic Design	CERT	1	1	-	2	-	1	-	-	-	-	0.0%	-100.0%
EK06	Web Design Graphics	CERT	-	-	-	-	2	-	1	-	-	1	100.0%	100.0%
EB70	Graphic Design: Multimedia Option	AS	-	-	-	-	-	4	4	3	5	4	-20.0%	400.0%
Total Arts Degrees Awarded			18	13	15	10	21	26	20	19	20	26	30.0%	44.4%

			2006-07	2007-08	2008-09	2009-10	2010-11	2011-12	2012-13	2013-14	2014-15	2015-16	%Difference Previous Year	%Difference 10 Years
EF08	Banking	AS	-	-	-	-	-	2	1	-	-	-	0.0%	0.0%
EA89	Business Administration: Small Business Management	AS	6	9	2	5	10	6	7	8	4	7	75.0%	16.7%
EB55	Business Administration: Customer Service/Marketing	AS	1	1	4	3	5	5	-	2	1	5	400.0%	400.0%
EA56	Business Administration: Finance	AS	8	4	14	6	5	7	3	8	5	6	20.0%	-25.0%
EA67	Business Administration: General	AS	23	24	30	28	43	40	30	41	44	34	-22.7%	47.8%
EB56	Business Administration: Human Resource Management	AS	2	1	4	2	2	4	2	7	6	6	0.0%	200.0%
EA47	Business Administration: Information & DP	AS	-	-	-	-	-	-	-	-	-	-	0.0%	0.0%
EK05	Small Business Management/Entnrprn	CERT	-	-	-	1	1	-	-	-	2	-	0.0%	0.0%
EA60	Business Administration: Management	AS	3	15	9	7	16	11	12	11	18	15	-16.7%	400.0%
Total Business Administration Degrees Awarded			43	54	63	52	82	75	55	77	80	73	-8.8%	69.8%

			2006-07	2007-08	2008-09	2009-10	2010-11	2011-12	2012-13	2013-14	2014-15	2015-16	%Difference Previous Year	%Difference 10 Years
EJ09	BOT: Admin Support Assistant	CERT	1	2	1	-	-	-	-	2	2	1	-50.0%	0.0%
EA25	BOT: Executive Assistant	AS	-	-	-	-	-	-	-	2	-	-	0.0%	0.0%
EB18	BOT: Executive Assistant	AS	2	3	5	2	5	2	2	3	1	4	300.0%	100.0%
EA92	BOT: Word Processing	AS	1	-	-	-	-	1	-	1	-	-	0.0%	-100.0%
EJ60	BOT: Word Processing	CERT	-	2	1	-	-	-	-	-	-	-	0.0%	0.0%
Total Business Office Technology Degrees Awarded			4	7	7	2	5	3	2	8	3	5	66.7%	25.0%

			2006-07	2007-08	2008-09	2009-10	2010-11	2011-12	2012-13	2013-14	2014-15	2015-16	%Difference Previous Year	%Difference 10 Years
EJ61	Criminal Investigation	CERT	2	6	2	3	2	5	1	-	-	1	100.0%	-50.0%
EB13	Criminal Justice	AS	34	29	31	37	35	51	47	49	39	36	-7.7%	5.9%
EJ06	Police Management & Administration	CERT	-	1	-	-	-	1	-	-	-	-	0.0%	0.0%
EK01	Pre-Service Correction	CERT	-	-	-	-	-	-	-	-	-	-	0.0%	0.0%
EJ62	Corrections	CERT	-	-	-	-	-	-	-	-	1	-	-100.0%	0.0%
Total Criminal Justice Degrees Awarded			36	36	33	40	37	57	48	49	40	37	-7.5%	2.8%

			2006-07	2007-08	2008-09	2009-10	2010-11	2011-12	2012-13	2013-14	2014-15	2015-16	%Difference Previous Year	%Difference 10 Years
EB46	LAS: Journalism/Communications	AA	6	9	4	8	9	7	7	9	10	7	-30.0%	16.7%
Total Communications Degrees Awarded			6	9	4	8	9	7	7	9	10	7	-30.0%	16.7%

			2006-07	2007-08	2008-09	2009-10	2010-11	2011-12	2012-13	2013-14	2014-15	2015-16	%Difference Previous Year	%Difference 10 Years
EA95	Early Childhood Education	AS	31	31	31	21	40	25	35	32	-	-	0.0%	-3,100.0%
EJ89	Early Childhood Education	CERT	4	7	18	10	29	29	50	39	32	34	6.3%	750.0%
EA99	Early Childhood Inclusive	AS	-	-	-	-	-	-	-	-	35	32	-8.6%	3,200.0%
EJ79	Early Child Education Admin	CERT	-	-	-	-	-	-	-	1	1	-	-100.0%	0.0%
EB14	Early Childhood: Special Education	AS	6	3	13	4	8	2	-	2	-	-	0.0%	-600.0%
EJ73	Childhood Development Associate Prep.	CERT	-	-	-	-	-	-	4	-	-	7	700.0%	700.0%
Total Early Childhood Education Degrees Awarded			41	41	62	35	77	56	89	74	68	73	7.4%	78.0%

			2006-07	2007-08	2008-09	2009-10	2010-11	2011-12	2012-13	2013-14	2014-15	2015-16	%Difference Previous Year	%Difference 10 Years
EA30	Aviation Maintenance	AS	1	2	-	-	1	1	1	1	-	-	0.0%	-100.0%
EB16	Engineering Science	AS	-	-	-	1	2	4	6	8	16	8	-50.0%	800.0%
EB47	LAS: Pre-Engineering	AA	-	-	1	-	-	-	1	2	-	-	0.0%	0.0%
Total Engineering Science Degrees Awarded			1	2	1	1	3	5	8	11	16	8	-50.0%	700.0%

			2006-07	2007-08	2008-09	2009-10	2010-11	2011-12	2012-13	2013-14	2014-15	2015-16	%Difference Previous Year	%Difference 10 Years
EJ03	Advanced English Proficiency	CERT	2	-	2	1	-	1	3	3	1	1	0.0%	-50.0%
EJ99	Advanced ESL	CERT	1	-	-	-	-	-	-	-	-	-	0.0%	-100.0%
Total ESL Advanced Degrees Awarded			3	0	2	1	0	1	3	3	1	1	0.0%	-66.7%

			2006-07	2007-08	2008-09	2009-10	2010-11	2011-12	2012-13	2013-14	2014-15	2015-16	%Difference Previous Year	%Difference 10 Years
EB30	General Studies	AS	97	102	108	103	157	155	176	174	135	144	6.7%	48.5%
Total General Studies Degrees Awarded			97	102	108	103	157	155	176	174	135	144	6.7%	48.5%

			2006-07	2007-08	2008-09	2009-10	2010-11	2011-12	2012-13	2013-14	2014-15	2015-16	%Difference Previous Year	%Difference 10 Years
EA23	Nursing	AS	19	14	12	18	13	24	28	18	18	20	11.1%	5.3%
EA77	Occupational Therapy Assistant	AS	6	9	11	10	5	7	17	9	9	1	-88.9%	-83.3%
EA79	Physical Therapy Assistant	AS	-	2	5	2	1	4	3	6	5	-	-500.0%	0.0%
Total Health Occupations Degrees Awarded			25	25	28	30	19	35	48	33	32	21	-34.4%	-16.0%

			2006-07	2007-08	2008-09	2009-10	2010-11	2011-12	2012-13	2013-14	2014-15	2015-16	%Difference Previous Year	%Difference 10 Years
EF03	Drug & Alcohol Rehab Counseling	AS	-	-	-	-	-	-	-	-	-	-	0.0%	0.0%
EJ71	HS: Child/Youth Mental Health	CERT	1	3	-	-	1	-	2	-	1	2	100.0%	100.0%
EJ72	HS: Disabilities Specialist	CERT	-	-	-	-	-	-	-	-	-	-	0.0%	0.0%
EJ69	HS: Victim Services	CERT	-	-	-	-	-	-	-	-	-	-	0.0%	0.0%
EJ67	HS: Behavioral Healthcare Specialist I	CERT	7	6	8	8	10	5	10	26	21	14	-33.3%	100.0%
EJ68	HS: Behavioral Healthcare Specialist II	CERT	1	1	2	2	4	-	1	1	-	-	0.0%	-100.0%
EJ93	HS; Mental Health	CERT	4	3	-	-	-	-	-	-	-	-	0.0%	-400.0%
EB35	Human Services	AS	19	20	27	25	25	28	35	30	34	29	-14.7%	52.6%
EB45	LAS: Human/Behavioral & Social Sciences	AA	21	14	17	30	23	25	19	23	27	30	11.1%	42.9%
Total Human Services Degrees Awarded			53	47	54	65	63	58	67	80	83	75	-9.6%	41.5%

			2006-07	2007-08	2008-09	2009-10	2010-11	2011-12	2012-13	2013-14	2014-15	2015-16	%Difference Previous Year	%Difference 10 Years
EB60	Computer Information Systems	AS	15	9	11	17	20	13	13	14	15	13	-13.3%	-13.3%
EB63	Computer Information Systems: Graphics Multi Media	AS	-	-	-	-	-	-	-	2	1	-	-100.0%	0.0%
EB38	LAS: Computer Science	AA	1	4	-	1	1	-	-	-	1	-	-100.0%	-100.0%
EJ27	Microcomputer Application Specialist	CERT	-	-	-	-	-	-	-	-	-	-	0.0%	0.0%
EJ97	Microcomputer Network	CERT	-	-	-	-	-	-	-	-	-	-	0.0%	0.0%
EJ98	Microcomputer Repair Tech	CERT	1	-	-	-	-	-	-	-	-	-	0.0%	0.0%
EJ04	Network Administrator	CERT	-	4	-	-	-	-	-	-	-	-	0.0%	0.0%
EJ01	PC Applications	CERT	2	1	1	-	-	-	-	-	-	-	0.0%	-200.0%
EJ02	PC Repair Technology	CERT	3	3	6	7	8	7	3	5	4	-	-400.0%	-300.0%
EJ10	Technical Web Site Design	CERT	4	10	9	1	1	1	-	-	-	-	0.0%	-400.0%
EF11	Technology Studies	AS	-	-	-	-	1	-	-	-	-	-	0.0%	0.0%
EK07	Web Design Technology	CERT	-	-	2	5	5	4	8	10	6	6	0.0%	600.0%
EF19	Technology Studies: Industry Tech. Option	AS	-	-	-	-	-	-	1	-	1	1	0.0%	100.0%
EA08	Technological Studies: Ind Tech	AS	-	-	-	-	-	-	-	-	-	1	100.0%	100.0%
Total Information Technology Degrees Awarded			26	31	29	31	36	25	25	31	28	21	-25.0%	-19.2%

			2006-07	2007-08	2008-09	2009-10	2010-11	2011-12	2012-13	2013-14	2014-15	2015-16	%Difference Previous Year	%Difference 10 Years
EA98	Clinical Lab - BioTech	AS	1	1	-	-	-	-	-	-	-	-	0.0%	-100.0%
EA21	Medical Lab Technician	AS	-	-	-	-	-	-	-	-	-	-	0.0%	0.0%
EJ22	Phlebotomy	CERT	-	-	-	-	-	-	-	-	-	-	0.0%	0.0%
EA97	Clinical Lab Sciences	AS	1	-	-	-	-	-	-	-	-	-	0.0%	-100.0%
EA05	Clinical Lab Technology	AS	2	-	-	-	-	-	-	-	-	-	0.0%	-200.0%
EB42	LAS: Math/Science	AA	-	-	-	-	2	2	1	1	1	1	0.0%	100.0%
EA04	Clinical Lab Tech: Biotech Op	AS	-	1	-	-	-	-	-	-	-	-	0.0%	0.0%
EC35	Pathways in Teaching	AA	-	-	-	-	2	1	-	-	1	1	0.0%	100.0%
EB48	LAS: Pre-Environmental Science	AA	-	2	2	-	3	3	1	2	2	1	-50.0%	100.0%
EA10	Medical Assisting	AS	-	-	-	-	-	-	-	-	-	3	300.0%	300.0%
EK55	Health Career Pathways	CERT	-	-	-	-	-	-	-	-	-	2	200.0%	200.0%
Total Sciences and Math Degrees Awarded			4	4	2	0	7	6	2	3	4	8	100.0%	100.0%

			2006-07	2007-08	2008-09	2009-10	2010-11	2011-12	2012-13	2013-14	2014-15	2015-16	%Difference Previous Year	%Difference 10 Years
EJ83	Machine Technology I	CERT	-	-	-	-	-	-	30	28	-	-	0.0%	0.0%
EJ84	Machine Technology II	CERT	-	-	-	-	-	-	18	29	2	-	-200.0%	0.0%
EK60	Advanced Manufacturing Technology	CERT	-	-	-	-	-	-	-	-	37	36	-2.7%	3,600.0%
Total Manufacturing Certificates Awarded			0	0	0	0	0	0	48	57	39	36	-7.7%	3,600.0%

			2006-07	2007-08	2008-09	2009-10	2010-11	2011-12	2012-13	2013-14	2014-15	2015-16	%Difference Previous Year	%Difference 10 Years
EB61	Theater Arts	AA	6	7	3	4	3	-	3	2	4	5	25.0%	-16.7%
Total Theater Degrees Awarded			6	7	3	4	3	0	3	2	4	5	25.0%	-16.7%

Total Associate of Arts degrees			37	39	31	44	50	45	35	44	54	51	-5.6%	37.8%
Total Associate of Science degrees			313	315	364	327	441	440	468	479	437	411	-5.9%	31.3%
Certificates			37	51	54	43	65	56	133	145	110	105	-4.5%	183.8%
Total Degrees and Certificates Awarded			387	405	449	414	556	541	636	668	601	567	-5.7%	46.5%

Advisors by Students with Degree/Certificates Awarded

Barnes, Sandra	35	Clark, Mary, K.	4
Becker, Edward	24	Colon, Saulo, M.	4
Mannion, Samantha	23	Dawson, Asantewa	4
Noe, Laurie	22	Litwinowicz, Stella	4
Gugger, Michael	21	Monroe, Susan, Marcia	4
Pirog, Pamela, J.	21	Morales, Letizia, Ellen	4
Amico, Michael, C.	18	Ortiz, Jamilet, R.	4
Favret, John, L.	17	Ravanshad, Farshad	4
Meyrick, Charles, W	16	Rondinone, Tonya, H.	3
Keane, Edward, C	15	Steeves, Elizabeth	3
Mandel, Michael, R.	15	Bloom, Eleanor, J	2
Albaz, Asher	14	Keenan, Paul, J.	2
Anzenberger, Joanne	13	Leach, Mark	2
Ryder, Robert	13	Lloyd, Joan	2
Turiano, Laura, A.	11	Pappantoniou, Antonios	2
Valovcin, Mary Ann	11	Samberg, Rebecca	2
Coba-Loh, Claudine, J.	10	Sopchak, John, C.	2
Krill, Vernon, J.	10	Adams, Rebecca	1
Pinto, Andrew, N.	10	Behar, Joseph	1
Benezra, Theodora	9	Cockerham, Arthur, D.	1
Cohen, Michele	9	Empric, Scott	1
Tomey, Shelley, S.	9	Hart, Stephanie, A	1
Mark, Steven, W.	8	Kizershot, Julie	1
Wagner, Thomas, Michael	8	Lanci, Janet, M	1
Grossman, William, G.	7	Moncrieffe, Aubrey, J.	1
Hughes, Kirk	7	Reed, Michele	1
Lutris, Hamish, F.	7	Roche, Maria, S.	1
Sheehan, Geoffrey, T.	7	Szobota, Heidi, W.	1
Chance, Edwena, S.	6	Zajdel, Shirley	1
Kozek, Teresa, A.	6	Zander, Kyle	1
Nelson, Robert, E.	6	Unknown	2
Philips, Marina	6		
Kocay, Michelle	5		
Mellouk, Driss	5		
Micinilio, Kathleen	5		
Richards, Barbara, E.	5		
Rizzi, Richard	5		
Vlahac, Mary, Ann R	5		
Cahill-Lamboley, Maureen	4		
Cercone, Kathleen	4		

Term to Degree Academic Year: 2015-16

Term to Degree Academic Year: 2015-16				
Admitted Year	Spring	Summer	Fall	Total
2016	5	-	-	5
2015	13	2	51	66
2014	27	1	44	72
2013	39	3	66	108
2012	21	1	80	102
2011	13	-	46	59
2010	8	-	34	42
2009	7	1	18	26
2008	4	-	13	17
2007	3	-	7	10
2006	1	-	1	2
2005	1	-	3	4
2004	1	-	-	1
2003	-	-	3	3
2002	1	-	-	1
1998	1	-	-	1
Total	145	8	366	519

Further Reading on National Graduation Rates from Community Colleges

Trends in Community College Enrollment and Completion Data, 2015 — March 2015

College Graduation Rates: Behind the Numbers ACE



GO HAWKS