

Housatonic Community College

FINAL Enrollment Profile for Fall 2012 Semester



Office of Institutional
Research
Beacon Hall 285

Many thanks to our own HCC Honors student, Alexis Smith, for her editing work on this report.

<i>Freeze Dates</i>		<i>Freeze dates are determined by the College and are a capture of the data at a particular time for the purpose of consistency in reporting. The date usually occurs after the initial drop/add period of classes.</i>
<i>Fall 2004</i>	<i>September 22, 2004</i>	
<i>Fall 2005</i>	<i>September 12, 2005</i>	
<i>Fall 2006</i>	<i>September 12, 2006</i>	
<i>Fall 2007</i>	<i>September 13, 2007</i>	
<i>Fall 2008</i>	<i>September 16, 2008</i>	
<i>Fall 2009</i>	<i>September 8, 2009</i>	
<i>Fall 2010</i>	<i>September 13, 2010</i>	
<i>Fall 2011</i>	<i>September 12, 2011</i>	
<i>Fall 2012</i>	<i>September 14, 2012</i>	

The above freeze dates are used for the ten year trend graphs on the following page

Table of Contents

Head Count.....4

Student Type.....7

Full-Time/Part-Time Status.....10

Student Method for Registering.....12

Seats Distributed by Day and Time.....13

Distribution of Class Type.....14

Class Level.....15

Course Level.....16

Gender.....17

Age.....19

Race/Ethnicity.....20

Residency.....23

Advisors.....26

Programs.....27

HOUSATONIC COMMUNITY COLLEGE

Fall 2012 Enrollment FINAL
Friday, September 14, 2012

	Fall 2012 FREEZE Data	Fall 2011 FREEZE Data	Number of Students	Percentage Difference
Full-Time Students	2,056	2,242	-186	-8.3%
Part-Time Students	4,041	3,733	308	+8.3%
Total Headcount	6,097	5,975	122	+2.0%

Credit Hours	51,883	52,167	-284	-0.5%
FTE	3,459	3,478	981	-0.5%

(Source: SWRXF03)

Fall 2012 Faculty

	Full-Time Faculty	Part-Time Faculty	Total Faculty
Headcount	71	304	375
FTE (Full Time Equivalency)	71	20	91

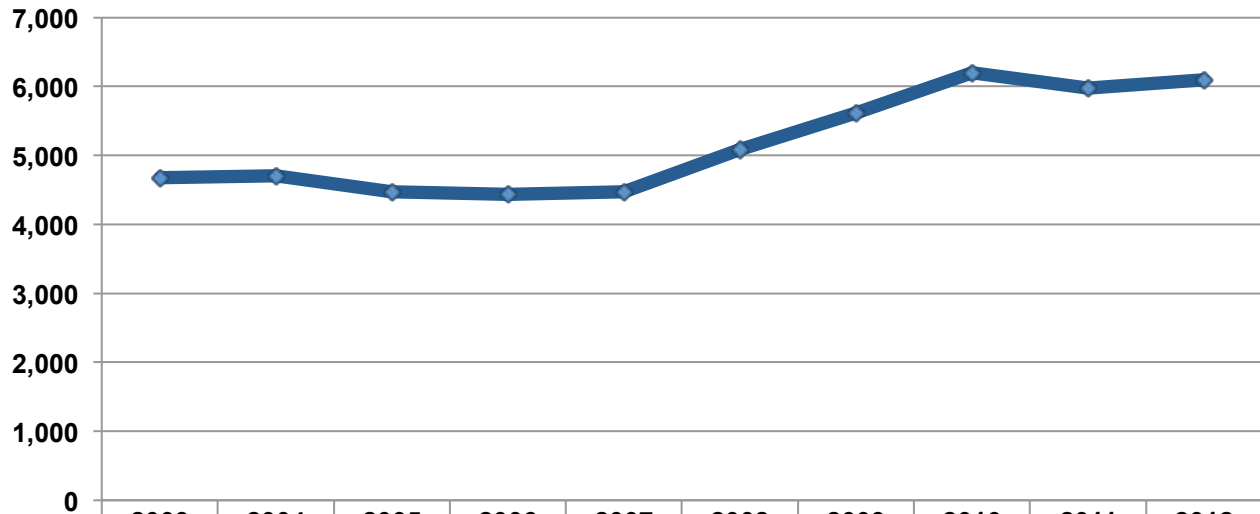
Source: SWRXIJ, *Part-time faculty FTE calculated by total number of part-time faculty divided by 15 credit hours.

Student to Faculty Ratio: Calculated by Student FTE/Faculty FTE

38:1

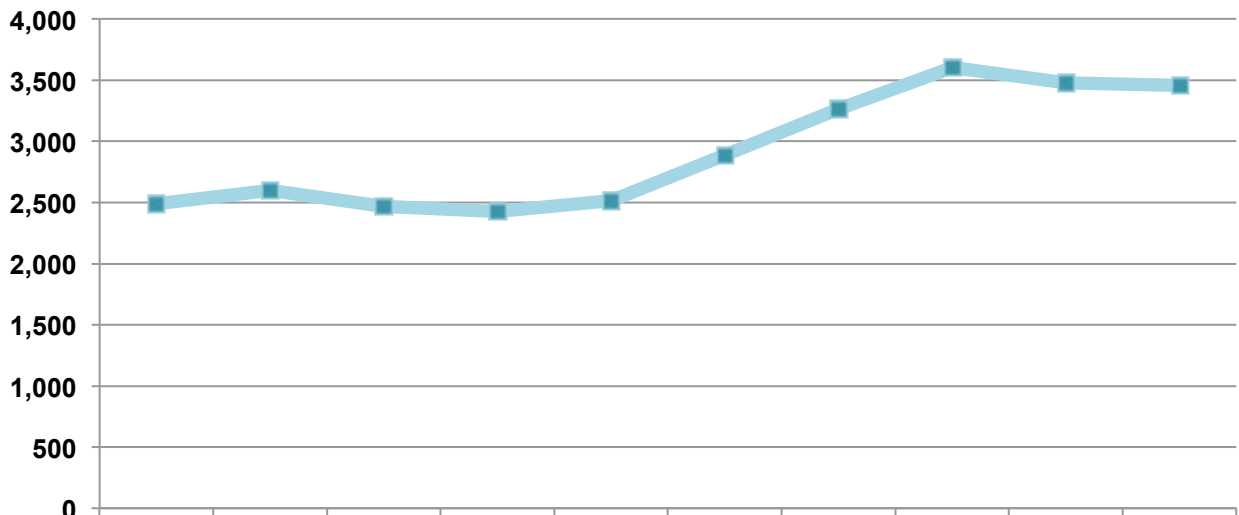
Ten Year Trends – Fall Semesters

Fall Semester Headcounts



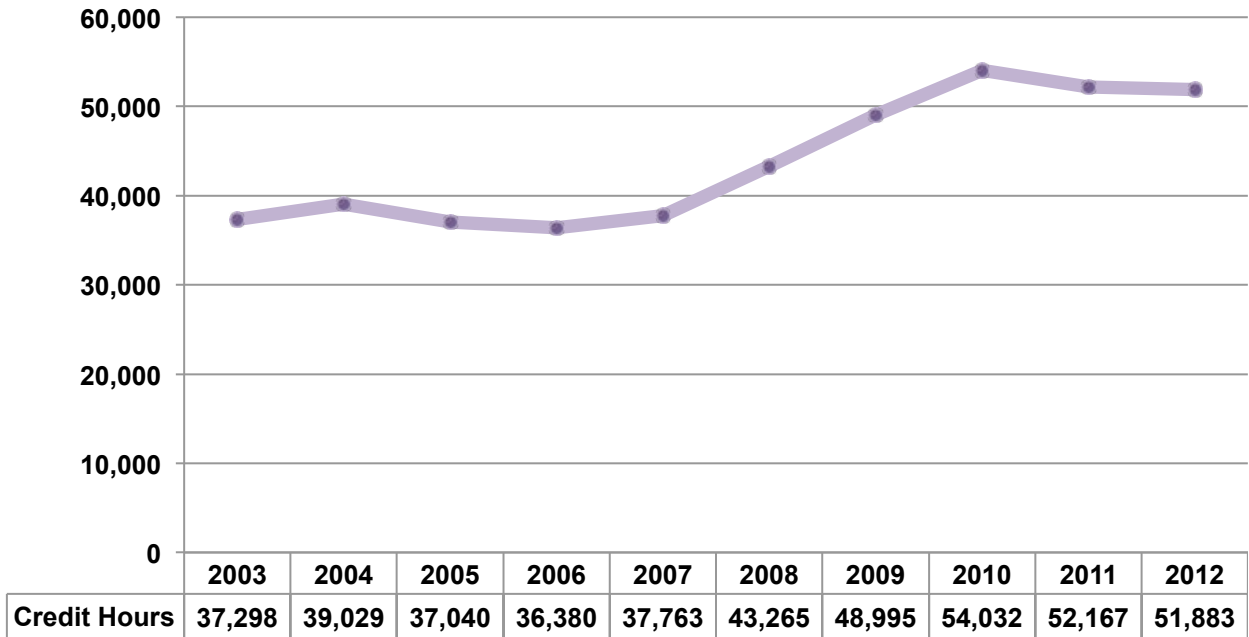
	2003	2004	2005	2006	2007	2008	2009	2010	2011	2012
Headcount	4,678	4,701	4,471	4,431	4,475	5,081	5,609	6,197	5,975	6,097

Fall Semesters - Full Time Equivalency (FTE)



	2003	2004	2005	2006	2007	2008	2009	2010	2011	2012
FTE	2,487	2,602	2,469	2,425	2,518	2,885	3,266	3,602	3,478	3,459

Fall Semesters - Credit Hour Production

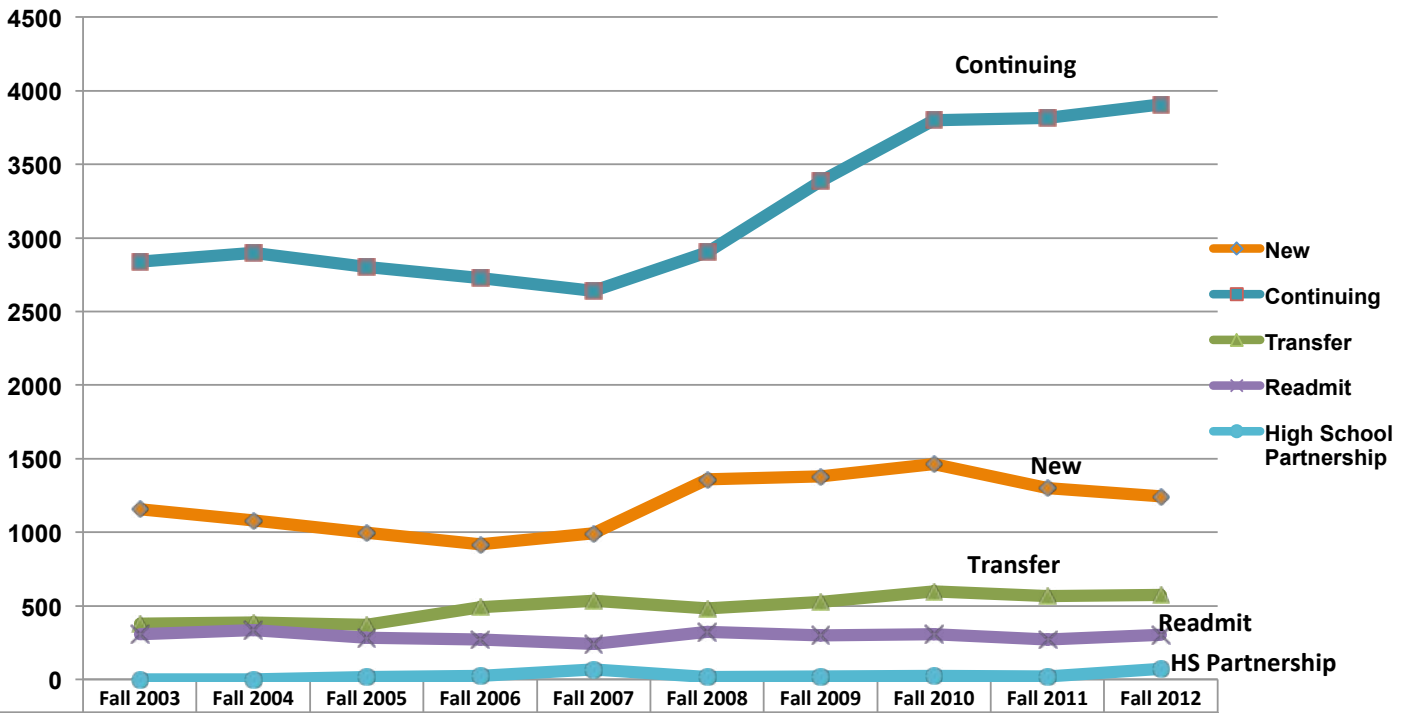


Student Type	Headcount Fall 2012 FINAL				Headcount Fall 2011 FINAL			
	Non-Degree	Degree Seeking	Total#	Total %	Non-Degree	Degree Seeking	Total #	Total %
New Students	93	1,152	1,245	20.4%	88	1,213	1,301	21.8%
Continuing Students	135	3,771	3,906	64.1%	147	3,668	3,815	63.8%
Transfer Students	141	434	575	9.4%	137	431	568	9.5%
Re-Admitted Students	35	266	301	5.0%	23	247	270	4.5%
Other	68	2	70	1.1%	20	1	21	.4%
Total Registered	472	5,625	6,097	100.0%	415	5,560	5,975	100.0%

Of the 6,097 students who registered for the fall 2012 semester as of the official freeze, the majority of students are continuing students (n=3,906, 64.1%), resulting in a slight increase from fall 2011. Twenty percent (n=1,245, 20.4%) of the student body are new students, first time in college. The fall 2012 semester profile of student type was similar to fall 2011, although the student body percentage of new students is slightly less but not significantly, and continuing students make up a slightly higher percentage. Much outreach work has been done in the Advising Office to guide students to claim a major. The percentage of students who are not degree seeking this fall 2012 is at 7.8% of the total student body, no significant change over last fall, although undecided students were 9% of the fall 2010 student body.

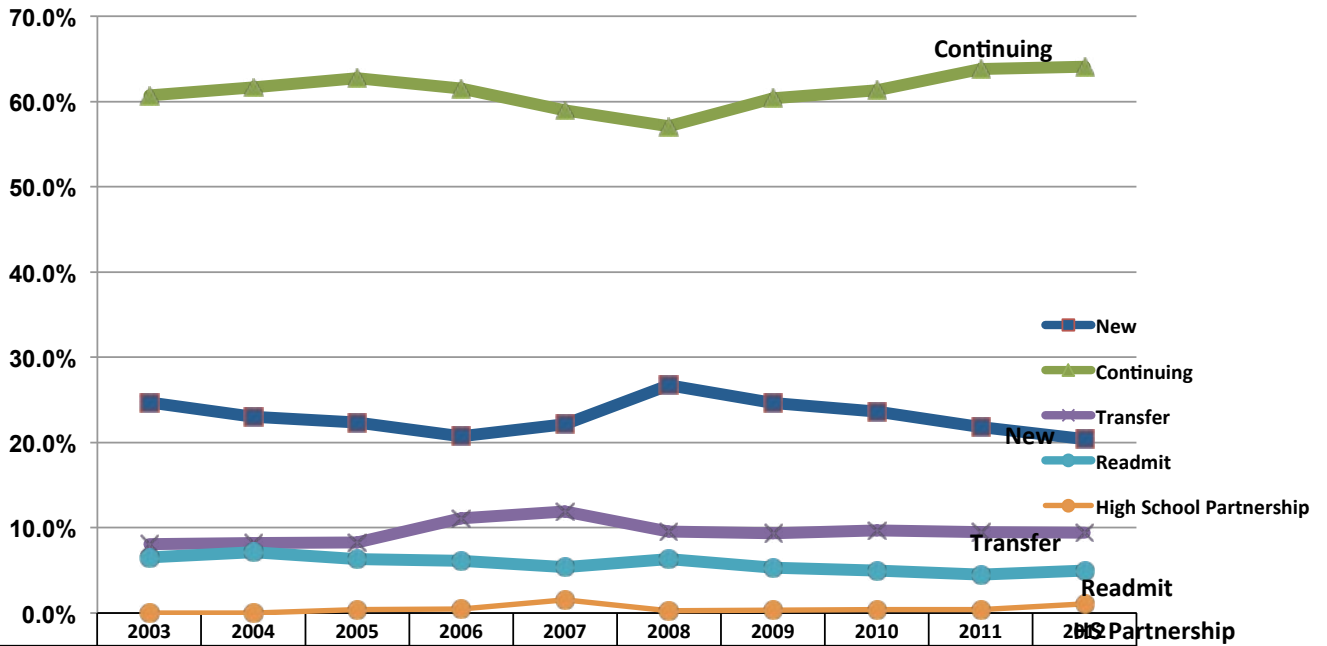
Student Type – Fall Semesters

Below is a chart indicating the enrollment status of HCC students over the last ten years.



	Fall 2003	Fall 2004	Fall 2005	Fall 2006	Fall 2007	Fall 2008	Fall 2009	Fall 2010	Fall 2011	Fall 2012
New	1155	1,082	998	918	992	1,359	1,380	1,465	1,301	1,245
Continuing	2840	2,899	2,804	2,727	2,640	2,901	3,386	3,801	3,815	3,906
Transfer	378	386	369	492	533	484	526	599	568	575
Readmit	305	334	283	272	241	322	299	308	270	301
High School Partnership	-	-	17	22	69	15	18	24	21	70

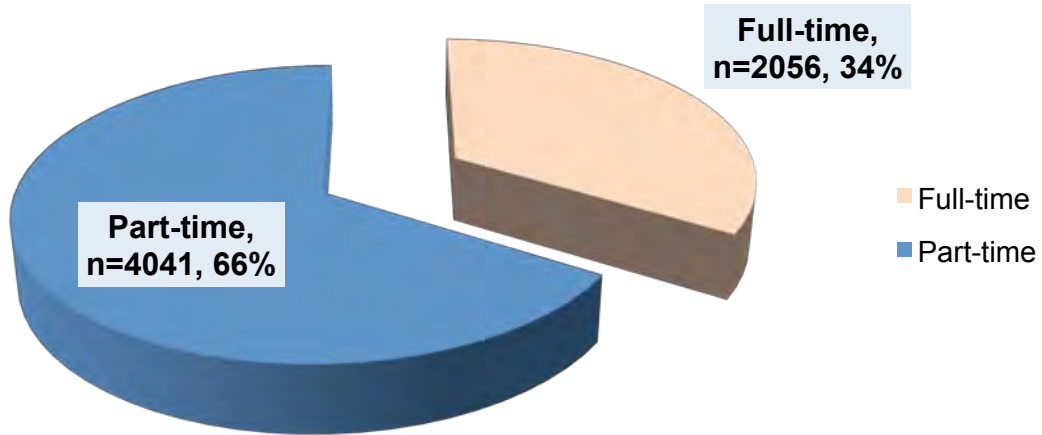
Student Type – Fall Semesters Percentage of Total Enrollment



	2003	2004	2005	2006	2007	2008	2009	2010	2011	2012
New	24.7%	23.0%	22.3%	20.7%	22.2%	26.7%	24.6%	23.6%	21.8%	20.4%
Continuing	60.7%	61.7%	62.7%	61.5%	59.0%	57.1%	60.4%	61.3%	63.8%	64.1%
Transfer	8.1%	8.2%	8.3%	11.1%	11.9%	9.5%	9.4%	9.7%	9.5%	9.4%
Readmit	6.5%	7.1%	6.3%	6.1%	5.4%	6.3%	5.3%	5.0%	4.5%	5.0%
High School Partnership	-	-	0.4%	0.5%	1.5%	0.3%	0.3%	0.4%	0.4%	1.1%

The increase in enrollment this fall shows that we had a slight increase in the percentage of continuing and readmit students and less of an increase in the percentage of new and transfer students. High school partnership students have increased more than ever before.

Full-time and Part-time Status

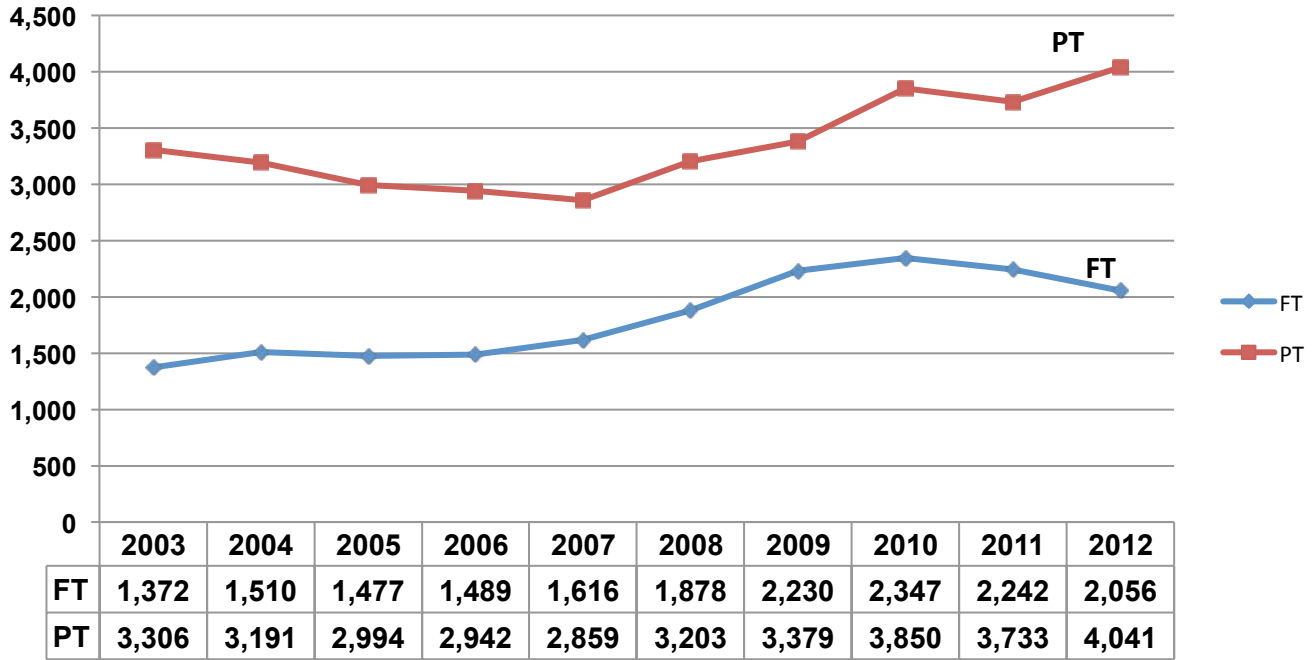


	FINAL Fall 2012	
FT/PT Status	Number	Percentage
Full-Time	2,056	33.7%
Part-Time	4,041	66.3%
Total Students	6,097	100.0%

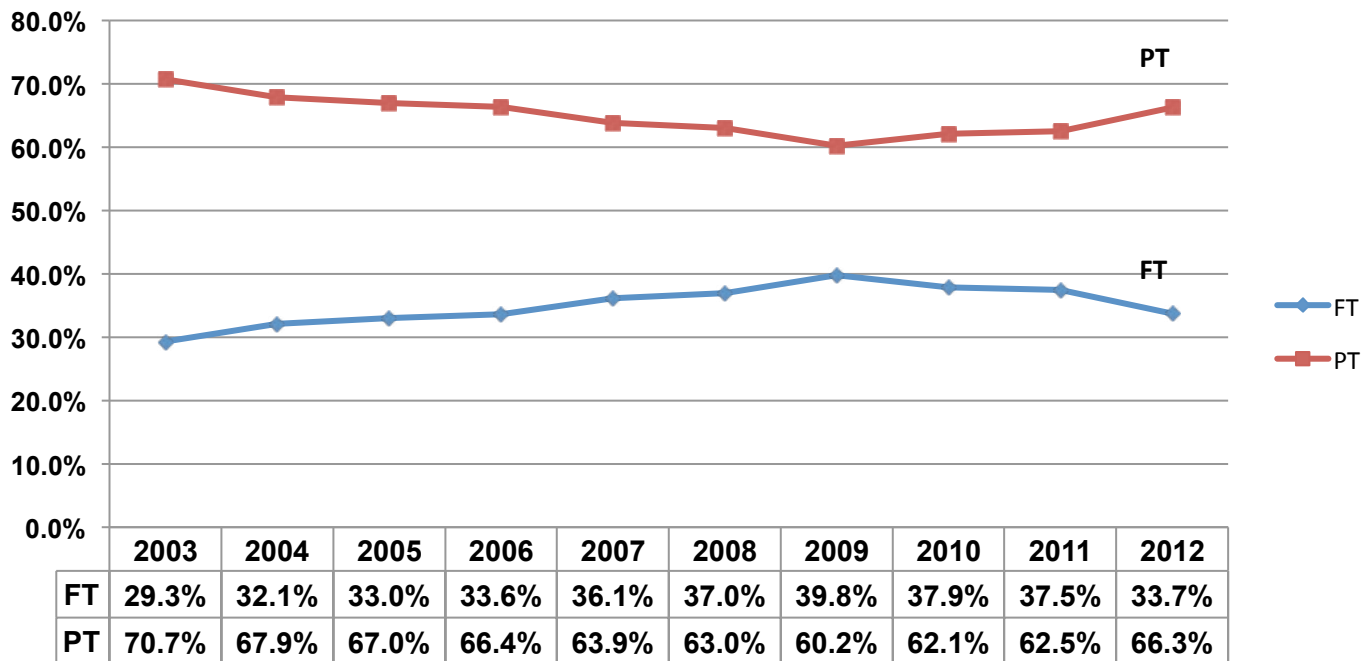
	FINAL Fall 2011	
	Number	Percentage
Full-Time	2,242	37.5%
Part-Time	3,733	62.5%
Total Students	5,975	100.0%

The percentage of enrollment status (full and part time) for the fall 2012 semester is similar to the enrollment status of the final figures for fall 2011 semester.

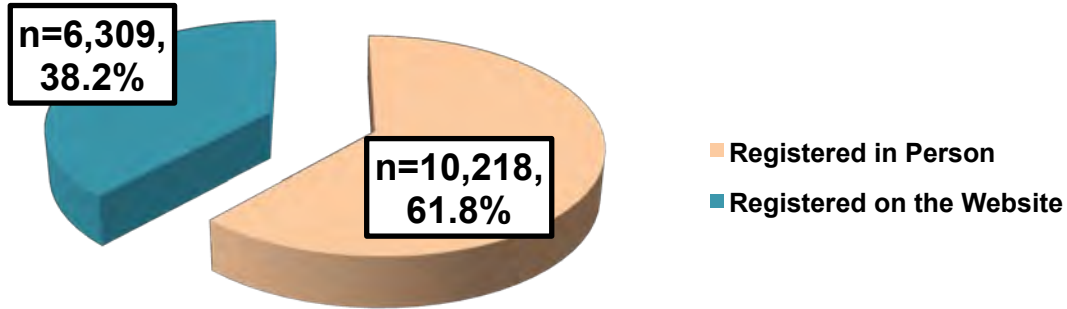
Full-Time/Part-Time Status – Fall Semesters



FINAL Enrollment Profile for Fall 2012 Semester



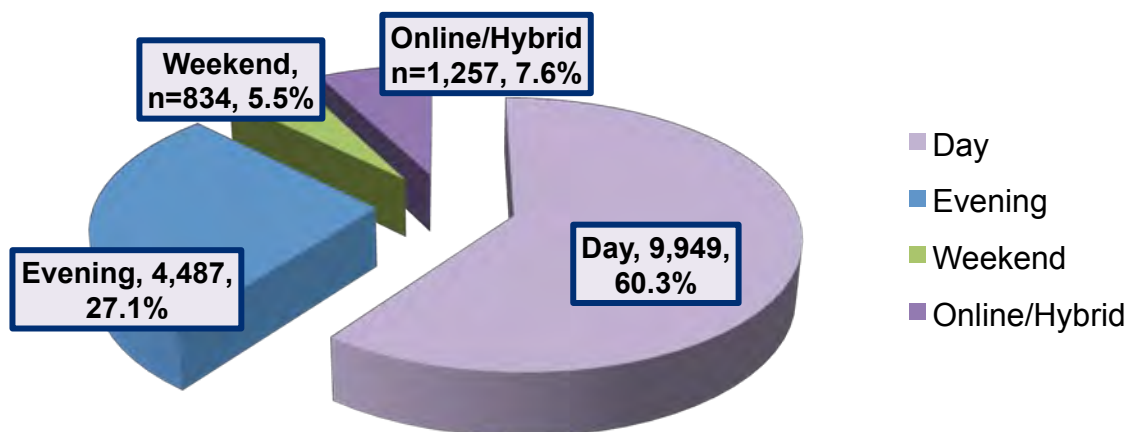
Fall 2012 Student Method of Registering for Class



Registration Status	Final (Seats) Fall '12		Final (Seats) Fall '11	
	Seats	Percentage	Seats	Percentage
Seats Registered in Person	10,218	61.8%	10,518	63.6%
Seats Registered on the Web	6,309	38.2%	6,013	36.4%
Total	16,527	100.0%	16,531	100.0%

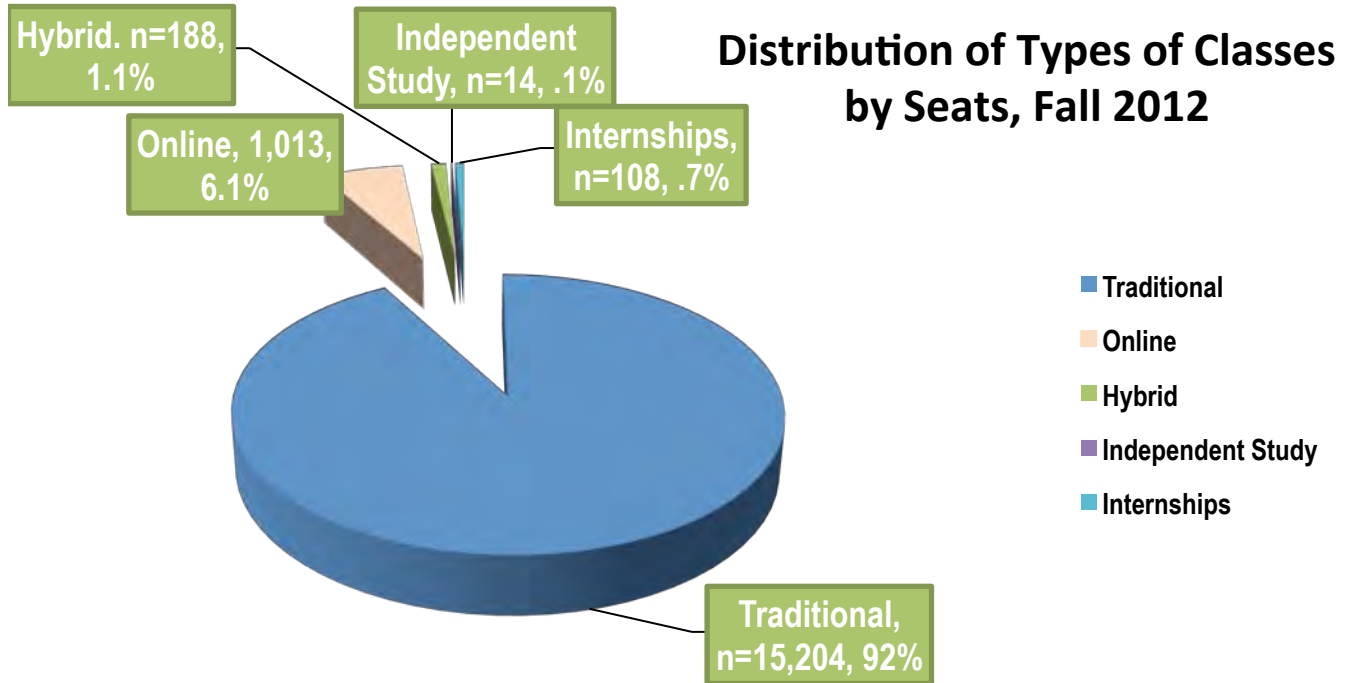
Students continue to primarily register for their classes in person (61.8%), although a slight more registered on the website than last fall 2011.

Seats Distributed by Day and Time



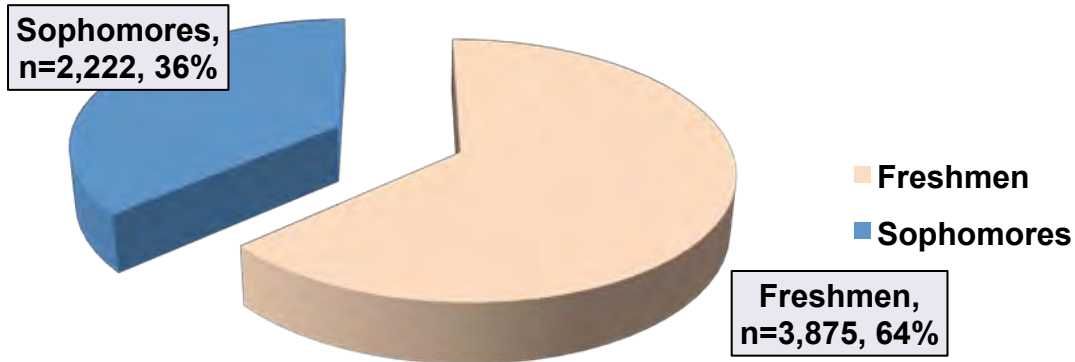
Distribution of Class Days and Times	Unduplicated # Students	# of Seats	% of Seats
Day Student Seats (classes beginning M-F 8:00 am to 4 pm)	4,038	9,949	60.3%
Evening Student Seats (classes beginning M-TH at 4 p.m. and later)	2,865	4,487	27.1%
Weekend Student Seats (classes beginning Friday 4 pm or later, anytime Saturday or Sunday)	774	834	5.0%
Online/Hybrid	910	1,257	7.6%
Total Seats	8,587	16,527	100%

Note: Unduplicated # students are for the category only. Students may take courses in multiple categories.



Instructional Method (Seats)				
	Fall 2012 FINAL		Fall 2011 FINAL	
Traditional	15,204	92%	15,268	92.3%
Online	1,013	6.1%	971	5.9%
Hybrid	188	1.1%	177	1.1%
Independent Study	14	.1%	24	.1%
Internships	108	.7%	91	.6%
Total Seats Registered	16,527	100.0%	16,531	100.0%

Fall 2012 Student Class

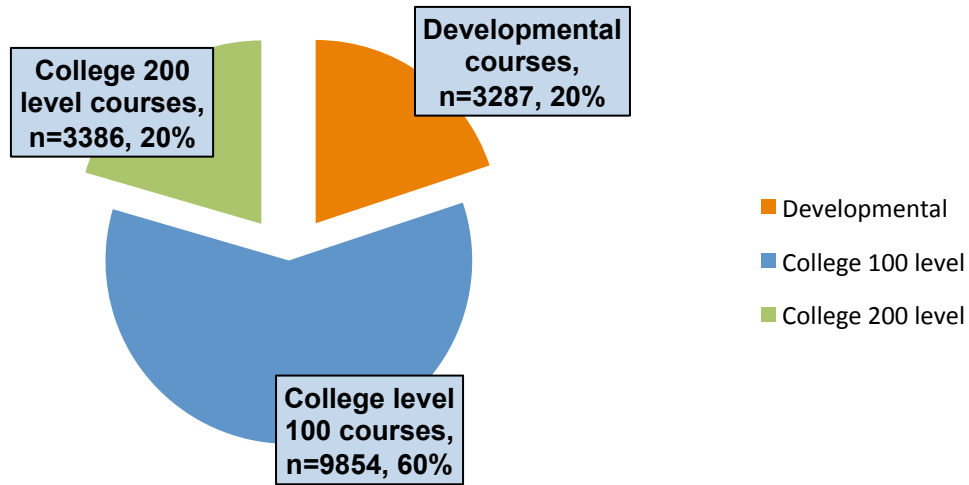


FINAL Fall 2012		
Class Level	Number	Percentage
Freshmen	3,875	63.6%
Sophomores	2,222	36.4%
Total Students	6,097	100.0%

FINAL Fall 2011	
Number	Percentage
3,894	65.2%
2,081	34.8%
5,975	100.0%

Freshmen are defined as accumulating 0-32 GPA credits, Sophomores are defined as earning 33 or more GPA credits.

Fall 2012 Student Course Level

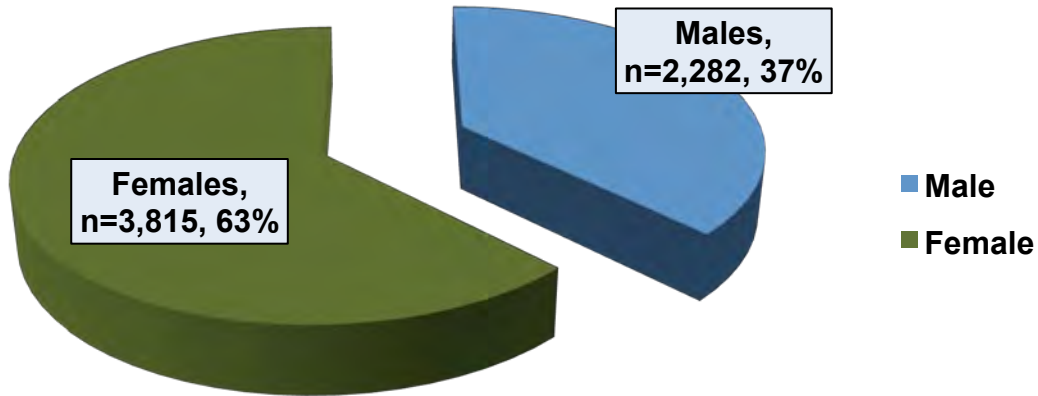


	FINAL Fall 2012	
Course Level	Number	Percentage
Developmental	3,287	20.0%
College 100	9,854	59.8%
College 200	3,386	20.2%
Total Students	16,527	100.0%

	FINAL Fall 2011	
	Number	Percentage
Developmental	3,571	21.6%
College 100	9,720	58.8%
College 200	3,240	19.6%
Total Students	16,531	100.0%

Students Taking # of Courses	# of students	% of students
1 course	1,331	21.8%
2 courses	1,622	26.6%
3 courses	1,119	18.4%
4 courses	1,679	27.5%
5 courses	274	4.5%
6 courses	33	.5%
7 courses	2	.0%
8 courses	38	.6%
9 courses	1	.0%
Total	6,097	100%

Fall 2012 Student Gender

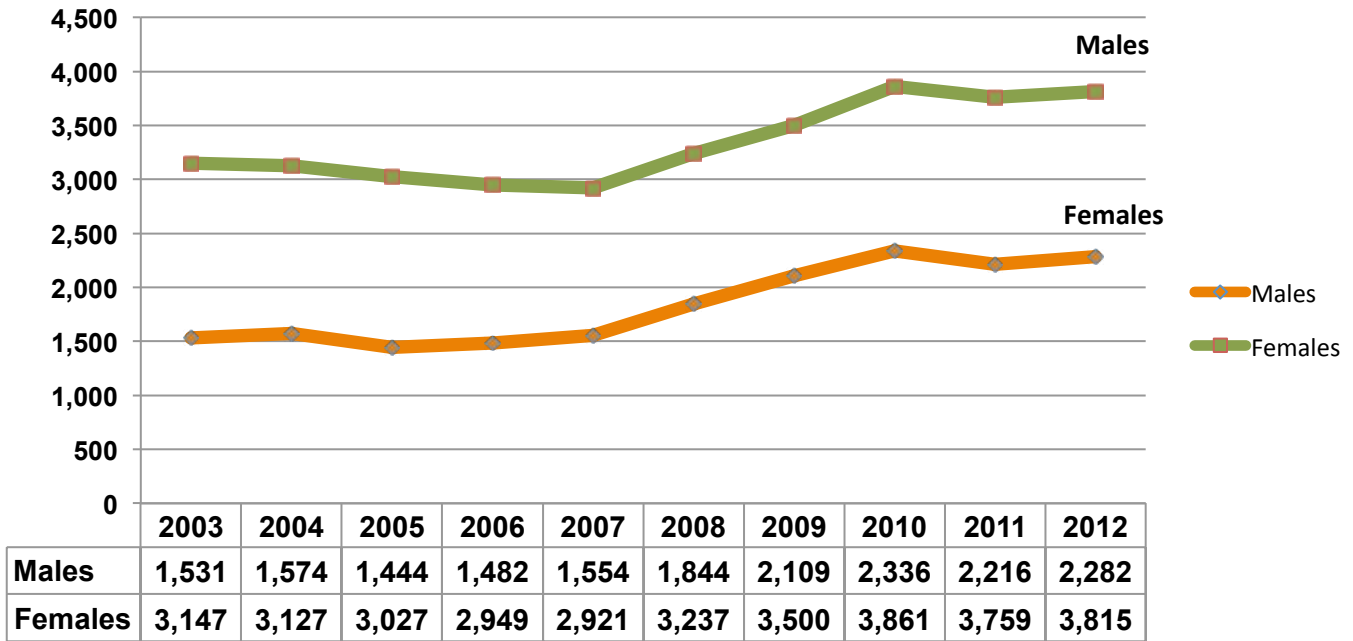


	FINAL Fall 2012	
Gender	Number	Percentage
Male	2,282	37.4%
Female	3,815	62.6%
Total Students	6,097	100.0%

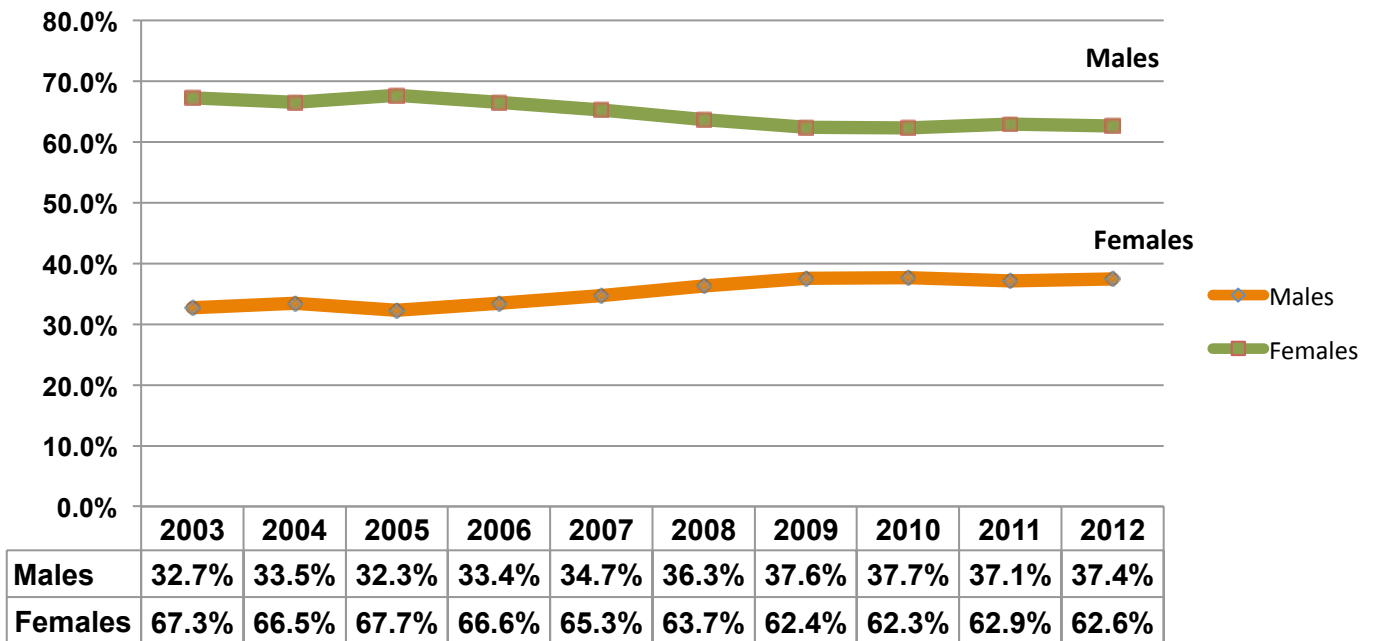
	FINAL Fall 2011	
	Number	Percentage
	2,216	37.1%
	3,759	62.9%
	5,975	100.0%

The majority of students who have enrolled this fall semester are female (n=3,815, 62.6%). The gender of registered students is similar to the profile of gender of students registered in the final roster for fall 1

Gender - Fall Semesters- Headcount



Gender – Fall Semesters
Percentage of Total Enrollment

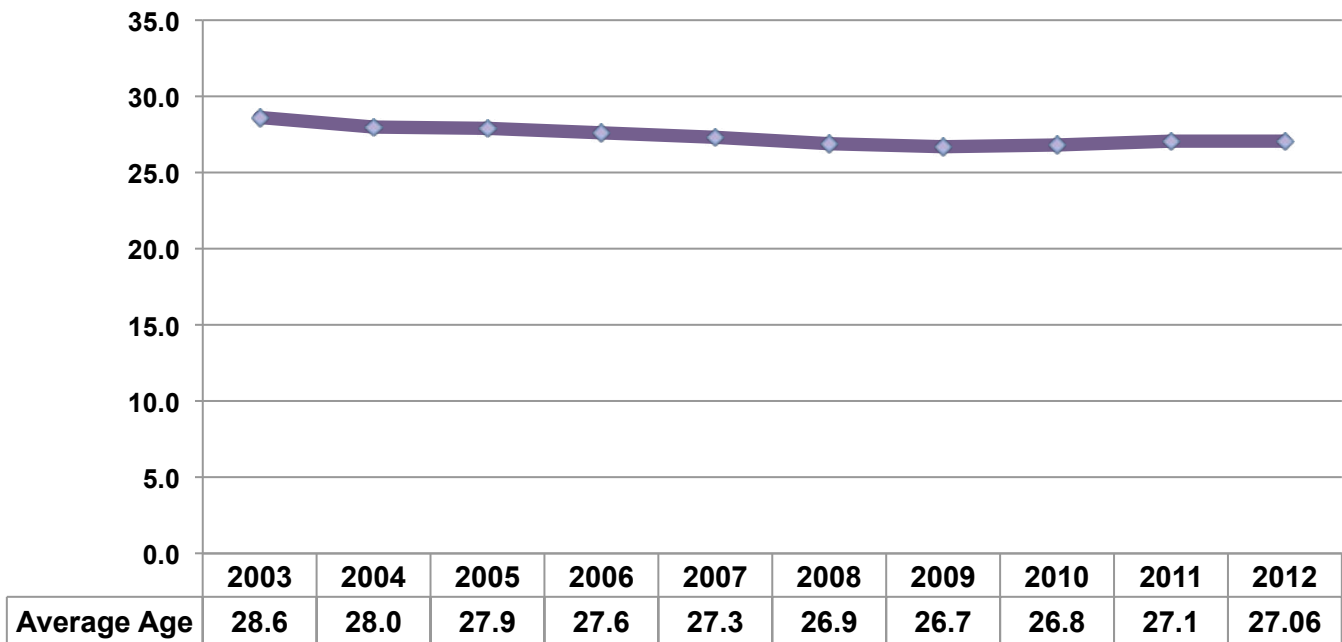


FINAL Enrollment Profile for Fall 2012 Semester

Final Fall 2012	
Age	
Mean	27.06
Median	23
Mode	19

FINAL Fall 2011	
Age	
Mean	27.03
Median	23
Mode	19

Average Age of Students – Fall Semesters

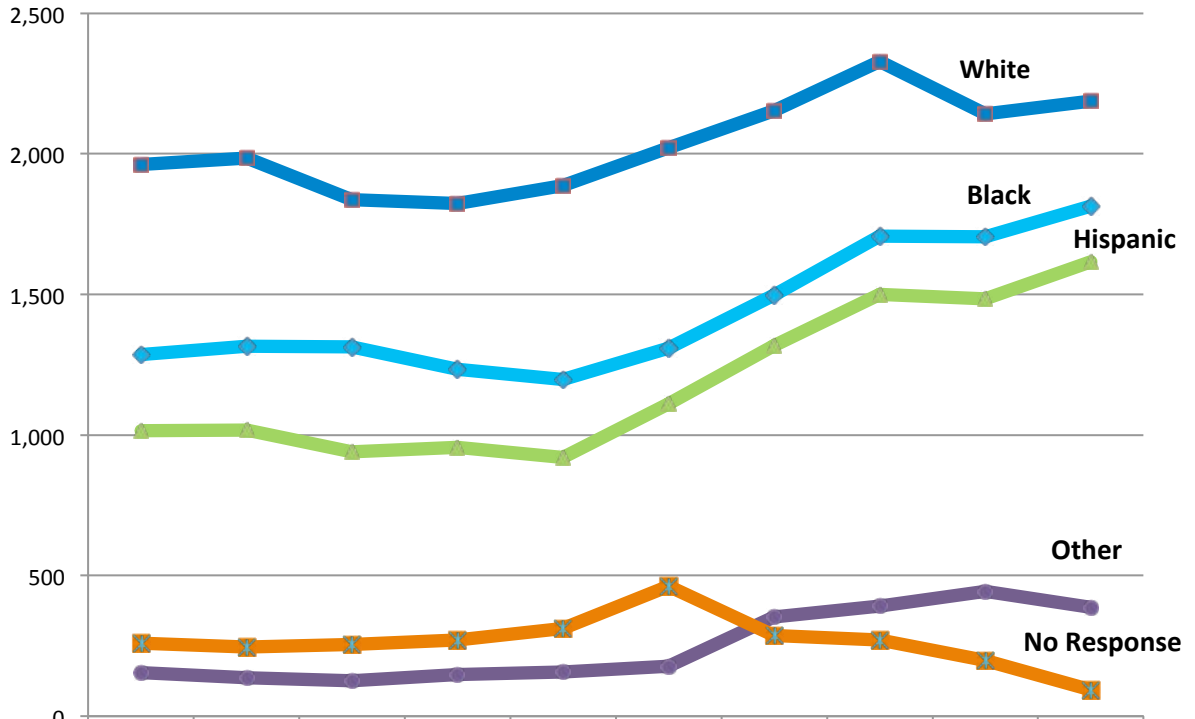


FINAL Enrollment Profile for Fall 2012 Semester

Race/Ethnicity	FINAL Fall 2012		FINAL Fall 2011	
	# of Students	% of Students	# of Students	% of Students
White (10)	2,188	35.9%	2,142	35.8%
Black or African American (20)	1,815	29.8%	1,705	28.5%
Hispanic (2)	1,615	26.5%	1,485	24.9%
Asian (45)	199	3.3%	181	3.2%
American Indian/Alaskan Native (50)	9	.1%	11	.1%
Native Hawaiian or Pacific Islander (80)	10	.2%	5	.1%
Other Race (90)	106	1.7%	155	2.6%
Multi Races (MULTI)	62	1.0%	93	1.5%
Choose Not to Respond (60) & No Response (NR)	93	1.5%	198	3.3%
Total Students	6,097	100.0%	5,975	100.0%

The distribution percentage of students' race/ethnicity registered for fall 2012 is very similar to the final fall 2011 enrollment profile. While white students have remained at approximately 36% of the student body, minority students have increased slightly over last fall. These categories have recently been added to the admissions application recently in accordance with the U.S. government for reporting purposes. An outreach effort to obtain race/ethnicity information from students has resulted in a decrease in the number of students enrolled with missing information.

Race/Ethnicity of Students – Fall Semesters

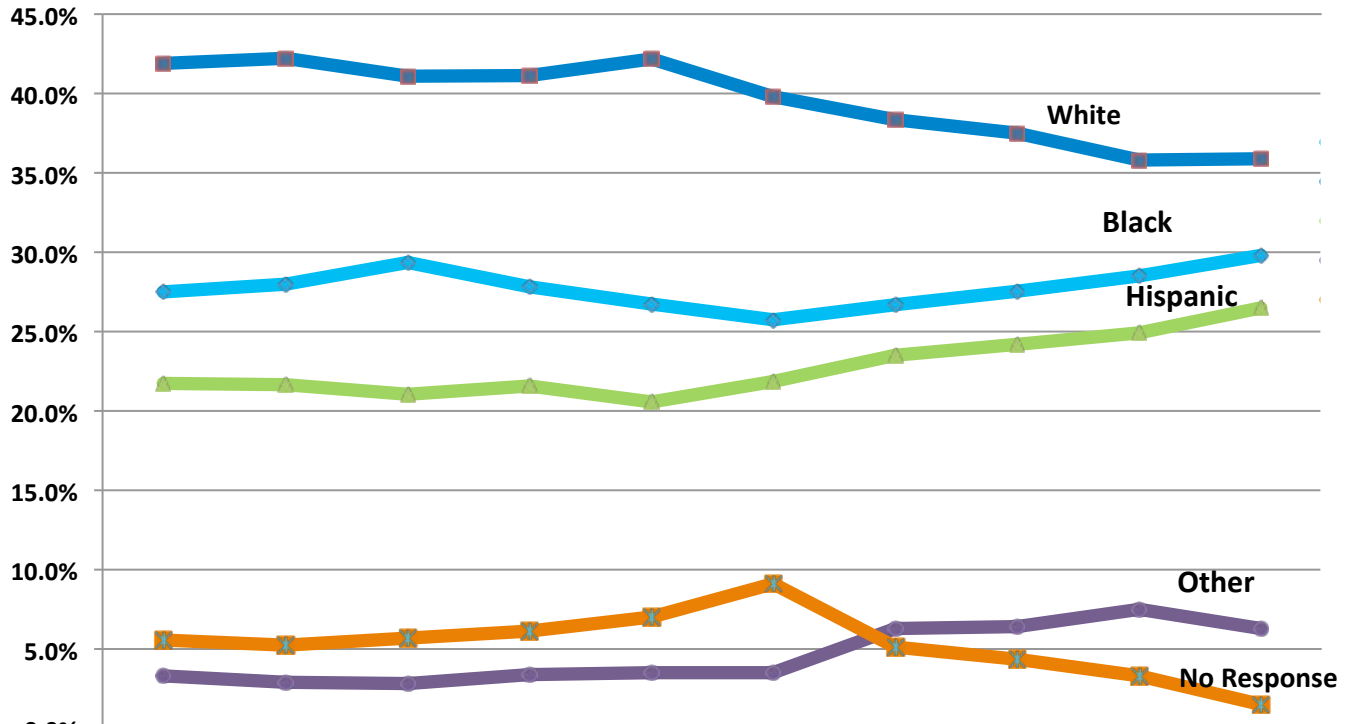


	2003	2004	2005	2006	2007	2008	2009	2010	2011	2012
Black	1,287	1,316	1,313	1,233	1,197	1,308	1,498	1,708	1,705	1,815
White	1,961	1,984	1,837	1,822	1,887	2,022	2,152	2,328	2,142	2,188
Hispanic	1,016	1,018	941	955	920	1,111	1,318	1,500	1,485	1,615
Other Race Chosen	154	137	126	149	158	177	353	391	445	386
Did not report	260	246	254	272	313	463	288	270	198	93

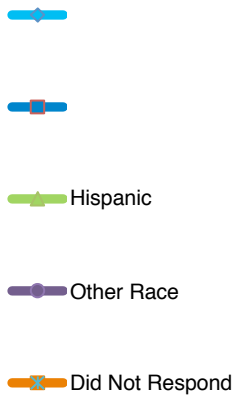
- ◆ Black
- White
- ▲ Hispanic
- Other Race
- ✕ Did Not Respond

Definition of Other Race Chosen:
 Includes students who report themselves as Alaskan, Native American, Hawaiian, Pacific Islander, Multiple Races, Asian, or any other race reported.

Race/Ethnicity of Students – Fall Semesters
Percentage of Total Enrollment



	2003	2004	2005	2006	2007	2008	2009	2010	2011	2012
Black	27.5%	28.0%	29.4%	27.8%	26.7%	25.7%	26.7%	27.6%	28.5%	29.8%
White	41.9%	42.2%	41.1%	41.1%	42.2%	39.8%	38.4%	37.5%	35.8%	35.9%
Hispanic	21.7%	21.7%	21.0%	21.6%	20.6%	21.9%	23.5%	24.2%	24.9%	26.5%
Other Race Chosen	3.3%	2.9%	2.8%	3.4%	3.5%	3.5%	6.3%	6.4%	7.5%	6.3%
Did not report	5.6%	5.2%	5.7%	6.1%	7.0%	9.1%	5.1%	4.4%	3.3%	1.5%



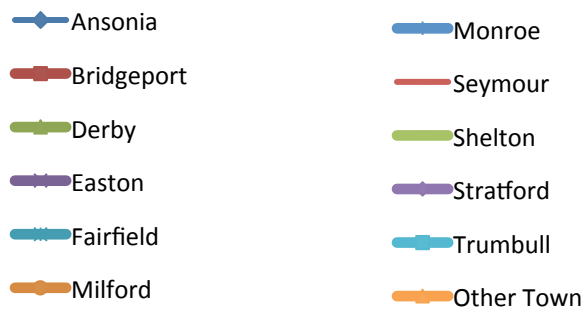
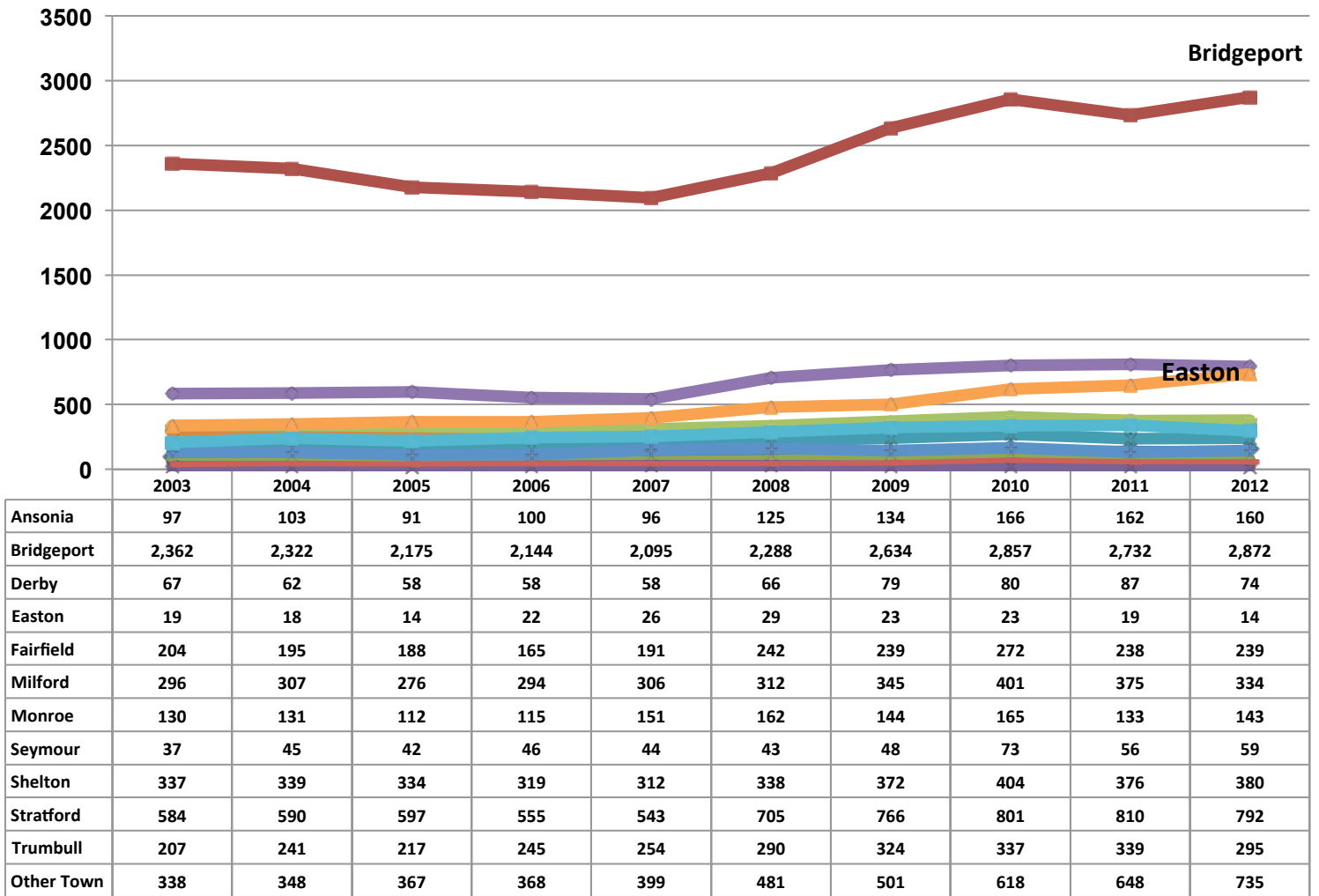
Definition of Other Race Chosen:
 Includes students who report themselves as Alaskan, Native American, Hawaiian, Pacific Islander, Multiple Races, Asian, or any other race reported.

Student Residency

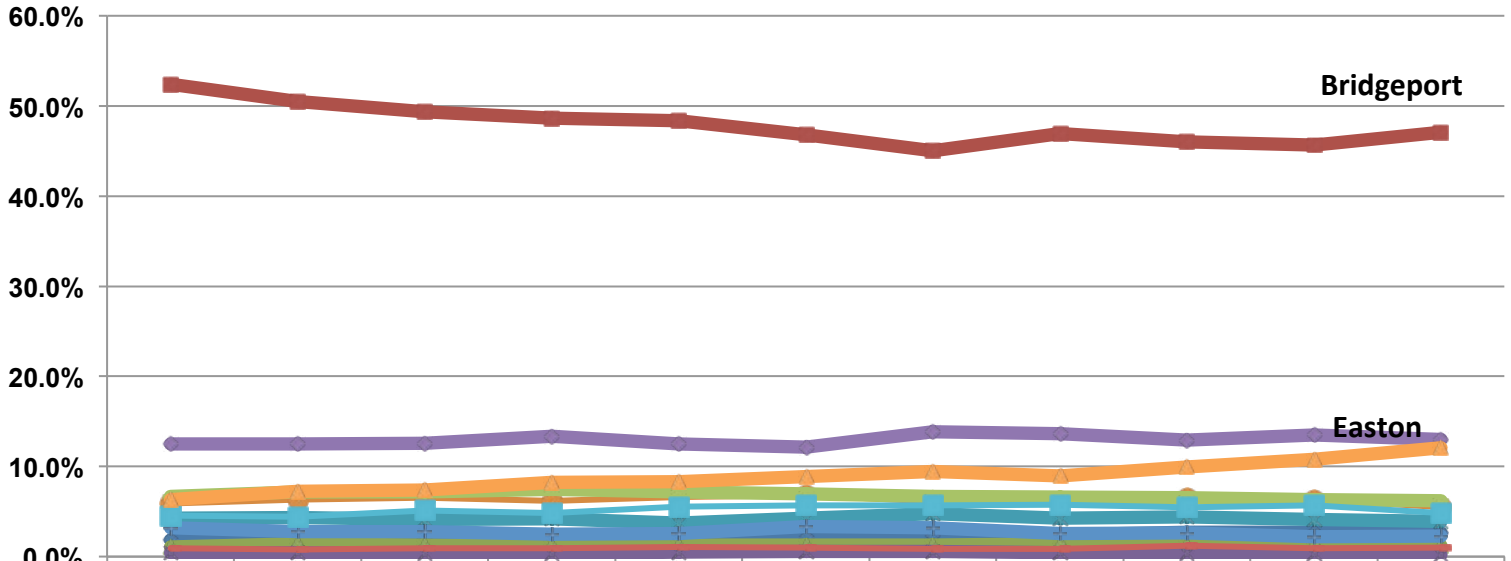
Student Residency	Fall 2012		Fall 2011		% increase/decrease
	Count	% of enrollment	Count	% of enrollment	
Ansonia	160	2.6%	162	2.7%	162
Bridgeport	2,872	47.1%	2,732	45.7%	2,732
Derby	74	1.2%	87	1.5%	87
Easton	14	.2%	19	.3%	19
Fairfield	239	3.9%	238	4.1%	238
Milford	334	5.5%	375	6.3%	375
Monroe	143	2.3%	133	2.2%	133
Seymour	59	1.0%	56	.9%	56
Shelton	380	6.2%	376	6.3%	376
Stratford	792	13.0%	810	13.5%	810
Trumbull	295	4.8%	339	5.7%	339
Total Students in Service Area	5,362	87.9%	5,327	89.2%	5,327
Students Residing in Towns Not in Service Area	735	12.1%	648	10.8%	648
Total	6,097	100.0%	5,975	100.0%	5,975

The numbers above reflect the current residency of the entire student body. It does not reflect the recruitment efforts of traditional age college students and should not be analyzed as such.

Headcount Enrollment by Town – Fall Semesters



Headcount Enrollment by Town Percentage of Enrollment



	2002	2003	2004	2005	2006	2007	2008	2009	2010	2011	2012
Ansonia	1.8%	2.1%	2.2%	2.0%	2.3%	2.1%	2.5%	2.4%	2.7%	2.7%	2.6%
Bridgeport	52.4%	50.5%	49.4%	48.6%	48.4%	46.8%	45.0%	47.0%	46.0%	45.7%	47.1%
Derby	1.1%	1.4%	1.3%	1.3%	1.3%	1.3%	1.3%	1.4%	1.3%	1.5%	1.2%
Easton	0.4%	0.4%	0.4%	0.3%	0.5%	0.6%	0.6%	0.4%	0.4%	0.3%	0.2%
Fairfield	4.3%	4.4%	4.1%	4.2%	3.7%	4.3%	4.8%	4.3%	4.4%	4.1%	3.9%
Milford	5.9%	6.3%	6.5%	6.2%	6.6%	6.8%	6.1%	6.2%	6.5%	6.3%	5.5%
Monroe	3.2%	2.8%	2.8%	2.5%	2.6%	3.4%	3.2%	2.6%	2.7%	2.2%	2.3%
Seymour	0.9%	0.8%	1.0%	0.9%	1.0%	1.0%	0.8%	0.9%	1.2%	0.9%	1.0%
Shelton	6.7%	7.2%	7.2%	7.5%	7.2%	7.0%	6.7%	6.6%	6.5%	6.3%	6.2%
Stratford	12.5%	12.5%	12.6%	13.4%	12.5%	12.1%	13.9%	13.7%	12.9%	13.5%	13.0%
Trumbull	4.5%	4.4%	5.1%	4.9%	5.5%	5.7%	5.7%	5.8%	5.4%	5.7%	4.8%
Other Town	6.3%	7.2%	7.4%	8.2%	8.3%	8.9%	9.5%	8.9%	10.0%	10.8%	12.1%



Advisors, Counselors, and Faculty Advisors

Advisor	# Students
Adams, Rebecca	85
Albaz, Asher	115
Amico, Michael C	53
Anzenberger, Joanne	110
Barnes, Sandra	916
Becker, Edward	93
Benezra, Theodora	65
Bloom, Eleanor J	42
Boylan, Kevin M	39
Brown, David E	74
Cahill-Lambole, Maureen	62
Cercone, Kathleen	93
Chance, Edwena S	105
Clark, Mary K	474
Coba-Loh, Claudine J	19
Cohen, Michele	102
Conway, Janice	23
Dawson, Asantewa	58
Emric, Scott	74
Favret, John L	112
Gallagher, Joan F	178
Galluzzi, Jennifer	1
Griffin, William R	45
Grossman, William G	32
Hart, Stephanie A	33
Hughes, Kirk	83
Keane, Edward C	225
Keenan, Paul J	154
Kocay, Michelle	76
Koch, David A	105
Kozek, Teresa A	59
Krill, Vernon J	149
Lanci, Janet M	58
Leach, Mark	81

Advisor	# Students
Lloyd, Joan	47
Mandel, Michael R	140
Mannion, Samantha	218
Mark, Steven W	91
Meyrick, Charles W	10
Micinilio, Kathleen	42
Moncrieffe, Aubrey J	2
Monroe, Susan	39
Nelson, Robert E	103
Noe, Laurie	191
Nohai-Seaman, Jennifer L	1
Ortiz, Jamilet R	74
Pappantoniou, Antonios	15
Philips, Marina	103
Pinto, Andrew N	64
Pirog, Pamela J	151
Ravanshad, Farshad	32
Reed, Michele	76
Richards, Barbara E	99
Rizzi, Richard	61
Roche, Maria S	33
Rose, Eddie B	50
Roti, Grant C	2
Rudnick, David L	1
Ryder, Robert	110
Samberg, Rebecca	39
Schissler, Henry	20
Sheehan, Geoffrey T	33
Smith, Karyn L	23
Sopchak, John C	57
Steeves, Elizabeth	71
Toedt, Kathleen	8
Tomey, Shelley S	50
Valovcin, Mary Ann	46
No Assignment	2

**SPRING 2012 STUDENTS WHO ARE ENROLLED FOR THE
FALL 2012 SEMESTER AT HCC**

PRIMARY PROGRAM	Spring 2012 enrollment #	2011-2012 Graduates Not Enrolled Fall 2012	ELIGIBLE Cohort	as of September 14, 2012 FINAL FREEZE	
				Fall 2012 Enrollment	% Enrolled from Spring 2012 Eligible cohort
Accounting	214	19	195	137	70.3%
Health Occupations	121	10	111	71	64.0%
Human Services	482	29	453	288	63.6%
Early Childhood Education	362	19	343	217	63.3%
Engineering Science	101	2	99	62	62.6%
Information Technology	178	10	168	103	61.3%
Business	539	36	503	304	60.4%
Communications	66	6	60	36	60.0%
Criminal Justice	485	30	455	267	58.7%
General Studies	2,165	62	2,103	1,210	57.5%
Nursing and Pre Nursing	720	16	704	405	57.5%
Math and Science	72	4	68	39	57.4%
Business Office Technology	23	2	21	12	57.1%
Arts	226	9	217	122	56.2%
Non Major	378	0	378	113	29.9%
Total Students	6,132	254	5,878	3,386	57.6%

Accounting: EA03, EA06, EA61, EJ05; Arts: EB20, EB33, EB59, EB61, EB70, EJ91; Business: EA47, EA56, EA60, EA 65, EA67, EA89, EA55, EA56, EA57, EA58, EA63, EF08, EK03, EK05, EJ28; Business Office Technology: EA92, EB18, EJ09, EJ60, EJ70; Criminal Justice: EB13, EJ06, EJ61, EJ62, EJ63, EK01; Communications: EB46; Early Childhood Education: EA95, EB14, EJ07, EJ73, EJ89, EJ92; Engineering Science: EA08, EA30, EA90, EB16, EB47, EF06, EF11, EF12, EN12; General Studies: EB30, EX97; Health Occupations: EA23, EA77, EA79, EK02, EK55; Human Services: EB35, EB45, EF03, EJ67, EJ68, EJ69, EJ71, EJ72, EJ93; Information Technology: EB38, EB60, EJ01, EJ02, EJ04, EJ07, EJ10, EJ27, EJ97, EJ98, EK07; Non-Degree: EZ98, EZ99; Science and Math: EA05, EA97, EA98, EB42, EB48, EC35.

Program Enrollment

Program Enrollment at Housatonic Community College

FALL ENROLLMENTS

Program & Group	Major Description	Code	2003- 04	2004- 05	2005- 06	2006- 07	2007- 08	2008- 09	2009- 10	2010- 11	2011- 12	2011- 12
Accounting	Accounting Assistant	EA06	9	7	7	8	7	7	5	9	4	2
	Accounting - CERT	EJ05	16	9	7	12	12	15	10	5	4	3
	Accounting for Small Business	EJ80										4
	Accounting Small Business Option	EA61									7	13
	Accounting	EA03	187	187	171	151	173	175	183	197	179	193
Fall Enrollment	ACCOUNTING TOTAL		212	203	185	171	192	197	198	211	194	215
Arts	Fine Arts: Art	EB20	37	32	40	42	37	42	51	67	60	48
	Theater Arts	EB61	12	22	27	26	33	41	32	30	22	22
	Graphic Design	EB33	92	68	52	48	55	72	97	98	90	86
	Graphic Design: Multi Media	EB70	0	0	0	0	0	0	3	15	32	29
	Web Design Graphics-CERT											2
	Graphic Design - CERT	EJ91	9	5	4	14	10	12	8	3	7	4
	Graphic Design: Comp Graphics	EB59	19	38	43	54	37	44	29	15	4	4
Fall Enrollment	ARTS TOTAL		169	165	166	184	172	211	220	228	215	195
Business Administration	Bus. Admin.: Customer Service/Markg	EB55	13	19	16	29	31	36	40	31	30	24
	Customer Service/Marketing -CERT	EK03								1	1	1
	Bus Adm: Information & DP	EA47	6	0	0	0	0	0	0	0		0
	Bus Adm: Finance	EA56	37	33	36	39	49	55	37	51	35	34
	Bus Adm: General	EA67	182	198	184	189	203	255	254	275	241	252

FINAL Enrollment Profile for Fall 2012 Semester

	<i>Bus Adm: Global Business</i>	EA65	0	0	0	0	0	5	9	20	17	20
	Bus Adm: Health Care Mgmt	EB58	12	15	15	11	17	15	10	1	2	1
	Bus Adm: Human Resource Mgmt	EB56	21	21	15	17	24	26	22	24	21	28
	Bus Adm: Management	EA60	87	95	87	84	101	90	102	94	112	100
	Bus Adm: Non-Profit Mgmt	EB57	2	3	1	2	1	0	0	0		0
	Bus Adm: Small Bus Mgmt	EA89	52	71	60	66	49	48	60	54	54	64
	Small Busi/Entrprnness Management	EK05							1	0	3	8
	Banking	EF08	8	9	12	12	9	7	8	9	7	7
	CIS: Business Information Technology	EB62										3
	Retail Banking-CERT	EK04								1		2
	CIS Web Development	EB63									1	4
	Banking - CERT	EJ28	1	0	0	0	0	0	0	0		0
Fall Enrollment	BUSINESS ADMINISTRATION TOTAL		421	464	426	449	484	537	543	561	524	548
Business Office Technology	BOT: Admin Support Asst - CERT	EJO9	11	4	5	7	1	6	2	4	2	3
	BOT: Executive Assistant	EB18	25	31	27	19	30	29	30	30	18	12
	BOT: Legal Assisting - CERT	EJ70	15	8	5	5	4	4	1	1		0
	BOT: Word Processing	EA92	10	5	6	2	2	2	4	4	4	3
	BOT: Word Processing - CERT	EJ60	4	1	4	2	2	0	0	0		
Fall Enrollment	BUSINESS OFFICE TECHNOLOGY TOTAL		65	49	47	35	39	41	37	39	24	18
Criminal Justice	Corrections - CERT	EJ62	1	0	1	1	1	2	2	3	2	2
	Criminal Investigation - CERT	EJ61	15	14	19	24	16	18	12	13	14	10
	Criminal Justice	EB13	278	269	271	257	283	350	409	489	490	456
	Police Management & Admin - CERT	EJ06	0	0	0	3	2	4	4	3	4	5
	Pre-Service Correction	EK01	1	0	0	0	0	0	0	0		
	Security Operations - CERT	EJ63	1	0	0	0	0	0	0	0	1	1
Criminal Justice	CRIMINAL JUSTICE TOTAL		296	283	291	285	302	374	427	505	511	474
Communications	LAS: Journalism/Communications	EB46	66	74	50	57	62	62	77	77	63	62

FINAL Enrollment Profile for Fall 2012 Semester

Communications	COMMUNICATIONS TOTAL		66	74	50	57	62	62	77	77	63	62	
Early Childhood Education	Child Devl Associate Prep	EJ73	0	0	0	2	10	15	11	11	7	8	
	Early Childhood Ed - CERT	EJ89	64	49	40	39	30	30	36	30	29	22	
	Early Childhood Education	EA95	252	242	253	248	249	253	286	314	295	276	
	Early Childhood: Special Edu	EB14	39	43	34	40	38	36	37	35	28	32	
	In-Home Child Care - CERT	EJ92	0	1	0	2	1	0	0	0			
	Infant & Toddler Care - CERT	EJ07	0	0	0	0	1	3	6	6	3		
Early Childhood Education	EARLY CHILDHOOD EDUCATION TOTAL		355	355	327	331	329	337	376	396	362	338	
Engineering Science	Aviation Maintenance	EA30	2	1	1	1	3	8	4	6	6	8	
	Electrical - CERT	EN12	1	1	1	2	2	3	0	2	1	1	
	Computer Information Systems	EF06	7	9	6	6	7	10	11	15	10	13	
	Engineering Science/Pre-Engineering	EB16	22	34	22	25	25	57	45	37	46	49	
	LAS: pre-Engineering	EB47							28	31	36	34	
	Technology Studies: Eng. Tech	EF12							1	2	1	1	
	Technology Studies: Industrial Tech. Option	EF19										3	
	Technology Studies: Indstry Tech	EA08	0	0	0	2	4	3	4	1	2	1	
	Machine Technology Level I												34
	Machine Technology Level II												2
	Technology Studies	EF11								1	1	2	
	Technology Studies	EA90	7	3	5	8	5	3	3	0	1		
Engineering Science	ENGINEERING SCIENCE TOTAL		39	48	35	44	46	84	96	95	104	148	
ESL Advanced	Advanced English Proficiency- CERT	EJ03	9	12	16	28	30	19	21	11	11	10	
	Advanced ESL - CERT	EJ99	12	5	2	1	0	0	0	0			
ESL Advanced	ESL ADVANCED TOTAL		21	17	18	29	30	19	21	11	11	10	
General Studies	General Studies	EB30	1620	1791	1775	1840	1683	1936	2224	2646	2692	2789	
	SPEC GENERAL STUDIES	EZ97	4	0	0	0	0	0	0	0			
General Studies	GENERAL STUDIES TOTAL		1624	1791	1775	1840	1683	1936	2224	2646	2695	2789	

FINAL Enrollment Profile for Fall 2012 Semester

Health Occupations	Nursing	EA23	0	0	4	6	7	14	16	14	30	17
	Occupational Therapy Asst	EA77	40	33	25	35	32	24	26	38	35	36
	Physical Therapy Asst	EA79	30	31	18	12	13	15	10	7	9	10
	Health Careers Pathway - CERT	EK55	0	0	0	0	0	3	8	4	9	10
	Exercise Science - CERT	EK02	0	0	1	1	0	1	1	0		
Fall Enrollment	HEALTH OCCUPATIONS TOTAL		70	64	48	54	52	57	61	63	83	73
Human Services	Drug & Alcohol Rehab Counseling	EF03	12	1	1	0	0	0	0	0		
	HS: Behav Hlthcare Spec I - CERT	EJ67	9	12	14	9	10	11	8	8	7	12
	HS: Behav Hlthcare Spec II - CERT	EJ68	2	0	0	0	0	0	1	2		3
	HS: Chld/Youth Mntl Hlth - CERT	EJ71	13	17	13	12	10	8	9	5	4	7
	HS: Disabilities Spec - CERT	EJ72	2	4	6	5	3	0	0	1		
	HS: Mental Health - CERT	EJ93	16	19	21	18	14	10	8	5	4	2
	HS: Victim Services - CERT	EJ69	3	0	3	0	0	1	4	0	1	
	Human Services	EB35	170	150	138	174	187	232	250	284	274	271
	LAS: Hum/Behav & Social Sci	EB45	141	165	132	143	172	204	249	226	215	198
Fall Enrollment	HUMAN SERVICES TOTAL		368	368	328	361	396	466	529	531	505	493
Information Technology	Microcomputer Repair Tech - CERT	EJ98	8	4	0	0	0	0	0	0		
	Computer Information Systems	EB60	126	116	95	89	85	94	115	134	124	116
	Microcomp Network - CERT	EJ97	6	1	1	0	0	0	0	0		
	Microcomputer Appl Specialist - CERT	EJ27	6	1	0	0	0	0	0	0		
	Network Administrator - CERT	EJ04	0	0	0	2	3	4	2	3	1	
	PC Applications - CERT	EJ01	0	3	2	2	0	1	2	3	2	
	PC Repair Technology - CERT	EJ02	2	9	6	9	8	4	10	6	11	9
	Web Design Technology CERT	EK07									5	4
	LAS: Computer Science	EB38	96	76	55	45	36	35	30	28	31	44
	Technical Web Site Design - CERT	EJ10	0	0	1	2	4	7	5	8	5	2

FINAL Enrollment Profile for Fall 2012 Semester

Fall Enrollment	INFORMATION TECHNOLOGY TOTAL		244	210	160	149	136	145	164	182	179	175	
Non Degree	NON DEGREE/MATRIC	EZ98	0	23	26	7	16	6	5	3	2	2	
	NON DEGREE/NON MATRIC	EZ99	641	526	537	385	500	559	571	565	413	470	
	SPEC NON-CREDIT	EPCF	0	1	0	1	0	0	1	2			
Fall Enrollment	NON DEGREE TOTAL		641	550	563	393	516	565	577	570	415	472	
Science & Math	LAS: Math/Science	EB42	26	29	22	20	23	34	48	53	51	44	
	LAS: Pre-Environmental Sci	EB48	4	10	2	5	8	9	11	23	19	13	
	Clinical Lab Sciences - Biotech	EA98	19	15	11	12	3	4	0	0			
	Clinical Lab Sciences	EA97	29	15	5	4	1	0	0	0			
	Pathways to Teaching	EC35									3	23	30
	Clinical Lab Technology	EA05	6	11	12	8	1	3	0				
Fall Enrollment	SCIENCES & MATH TOTAL		84	80	52	49	36	50	59	79	93	87	
Total Fall Enrollment for HCC:			4,678	4,701	4,471	4,431	4,475	5,081	5,609	6,194	5,975	6,097	

Note: Data is captured on the freeze date each fall. A freeze date is a date determined by the college usually after the initial drop/add period of classes and uses those figures for reporting purposes. Freeze dates for fall semesters are the following: 9/22/04, 9/12/05, 9/12/06, 9/13/07, 9/8/09, 9/16/09, 9/13/10, 9/12/12