



HOUSATONIC COMMUNITY COLLEGE

SPRING 2013 - ENROLLMENT REPORT

**Office of Institutional Research
Beacon Hall 285**

FINAL Enrollment Profile for Spring 2013 Semester

*Many thanks to our own HCC Honors student, Alexis Smith
for her editing work on this report.*

FREEZE DATES (dates our data is extracted each semester for reporting purposes)			
Fall 2005	9/12/05	Spring 2006	2/7/06
Fall 2006	9/12/06	Spring 2007	2/7/07
Fall 2007	9/13/07	Spring 2008	2/6/08
Fall 2008	9/16/08	Spring 2009	2/6/09
Fall 2009	9/8/09	Spring 2010	2/5/10
Fall 2010	9/13/10	Spring 2011	2/9/11
Fall 2011	9/12/11	Spring 2012	2/3/12
Fall 2012	9/14/12	Spring 2013	2/7/13 PM

The above freeze dates are used for the ten year trend graphs on the following pages

FINAL Enrollment Profile for Spring 2013 Semester

Table of Contents

Head Count.....	3
Registration Status.....	5
Instructional Method.....	6
Student Type.....	6
Full-Time/Part-Time Status.....	9
Class Level.....	11
Course Level.....	11
Gender.....	12
Age.....	14
Race.....	15
Associate Degree Seeking Major.....	17
Certificate Seeking.....	18
Advisors, Counselors, and Faculty Advisors.....	20
Residency.....	24

FINAL Enrollment Profile for Spring 2013 Semester

HOUSATONIC COMMUNITY COLLEGE

Spring 2013 Enrollment Summary FINAL
Credit Courses
Thursday, February 7, 2013 PM

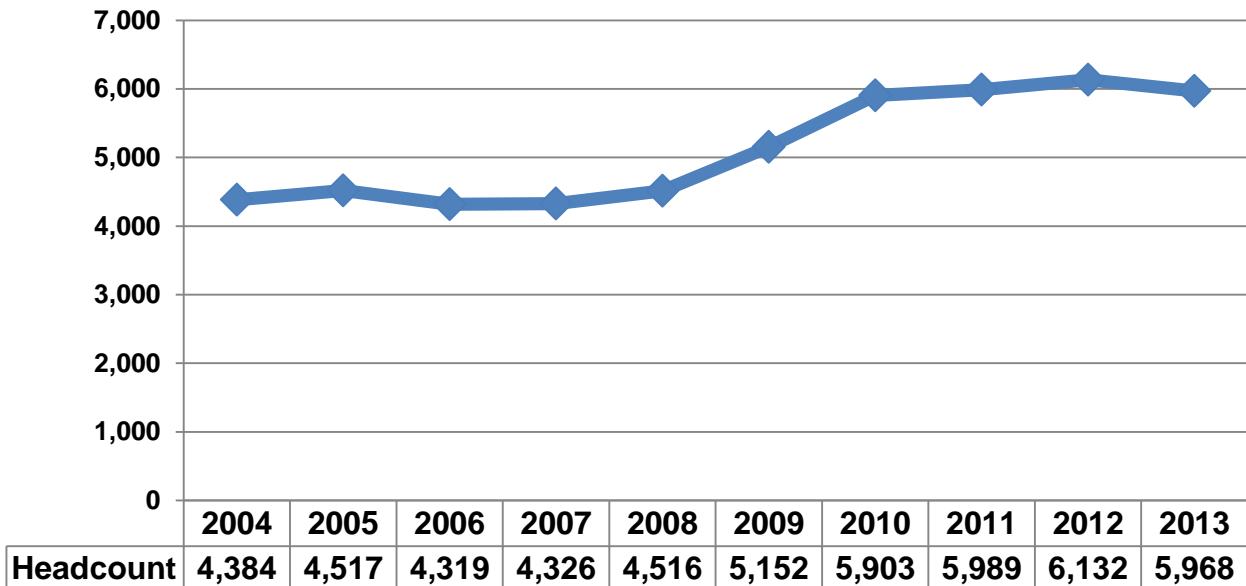
	Spring 2013 FREEZE Data	Spring 2012 FREEZE data	Number	Percentage Difference
Full-Time	1,851	1,884	-33	-1.8%
Part-Time	4,117	4,248	-131	-3.2%
Total Headcount	5,968	6,132	-164	-2.7%

. (Source: SWRXF03)

Credit Hours	50,017	51,088	-1,071	-2.1%
FTE	3,335	3,406	-71	-2.1%

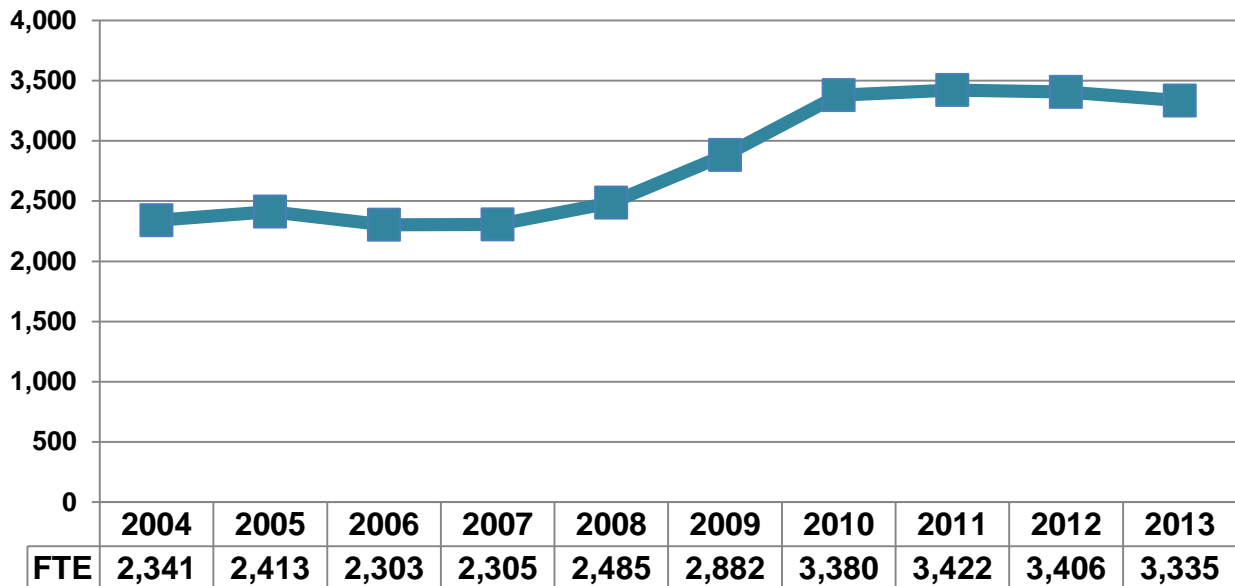
The above chart shows the final enrollment figures for the spring 2012 and spring 2013 semesters. The spring 2012 headcount is the highest spring enrollment in the history of HCC and an overall increase in headcount of 2.4% over spring 2011. Although headcount enrollment has declined over spring 2012, the decrease came more in part time enrollment.

Spring Semester Headcounts

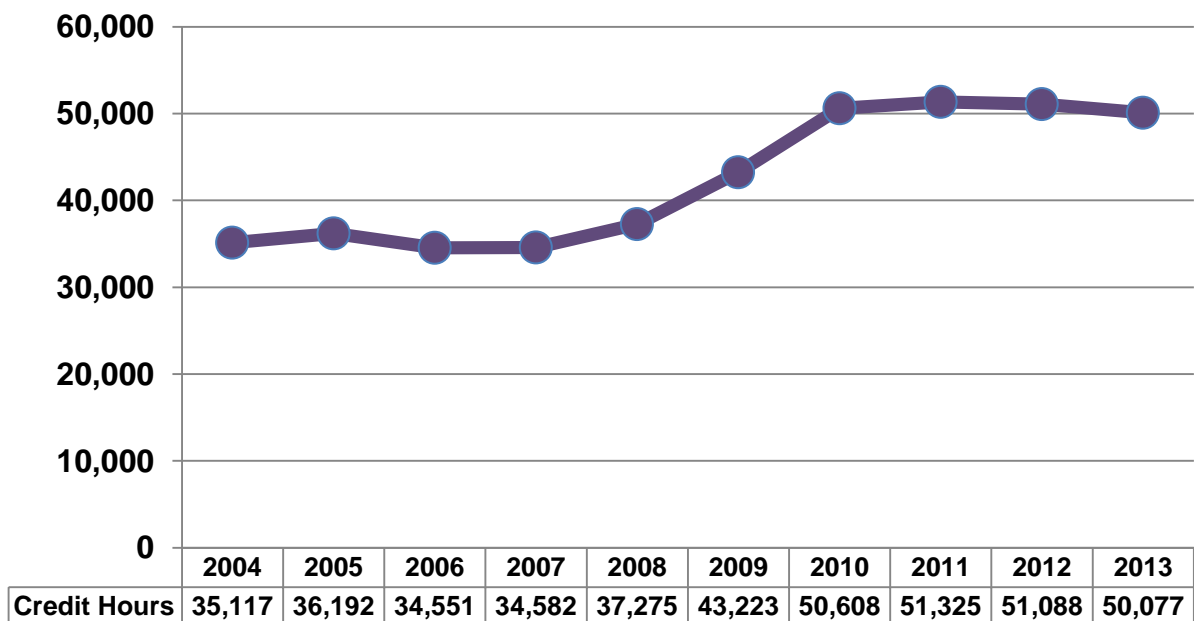


FINAL Enrollment Profile for Spring 2013 Semester

Spring Semesters - Full Time Equivalency (FTE)



Spring Semesters - Credit Hour Production



FINAL Enrollment Profile for Spring 2013 Semester

Registration Status	Final (Seats) Spring '13		Final (Seats) Spring '12	
Seats Registered in Person	9,650	61.1%	9,384	58.0%
Seats Registered on the Web	6,136	38.9%	6,783	42.0%
Total	15,786	100.0%	16,167	100.0%

Highlights include:

The final figures for spring 2013 shows **38.9%** ($n=6,136$) of the classes were registered online by students. This is a decrease in the number of class registrations using the web site for spring 2012 and spring 2011. We saw a 15% **increase** of online registration from fall 2010 to spring 2011. We theorized that this increase was due to publishing the spring 2011 class schedule online and eliminating the hard copy normally provided.

Instructional Method (Seats) Spring 2013 FINAL			Instructional Method (Seats) Spring 2012 FINAL	
Traditional	14,343	90.9%	14,835	91.8%
Online	1,074	6.8%	1,021	6.3%
Hybrid	192	1.2%	161	1.0%
Independent Study	53	.3%	45	.3%
Internships	124	.8%	105	.6%
Total Seats Registered	15,786	100.0%	16,167	100.0%

Students continue to primarily register for courses taught utilizing the traditional method of teaching ($n=14,343$, 90.9%), although 8% of courses are taken through distance learning (online and hybrid courses). The distribution of course teaching method for spring 2012 registrants are similar to the final figures for the spring 2013 semester. Online and hybrid courses fill early in the registration process.

FINAL Enrollment Profile for Spring 2013 Semester

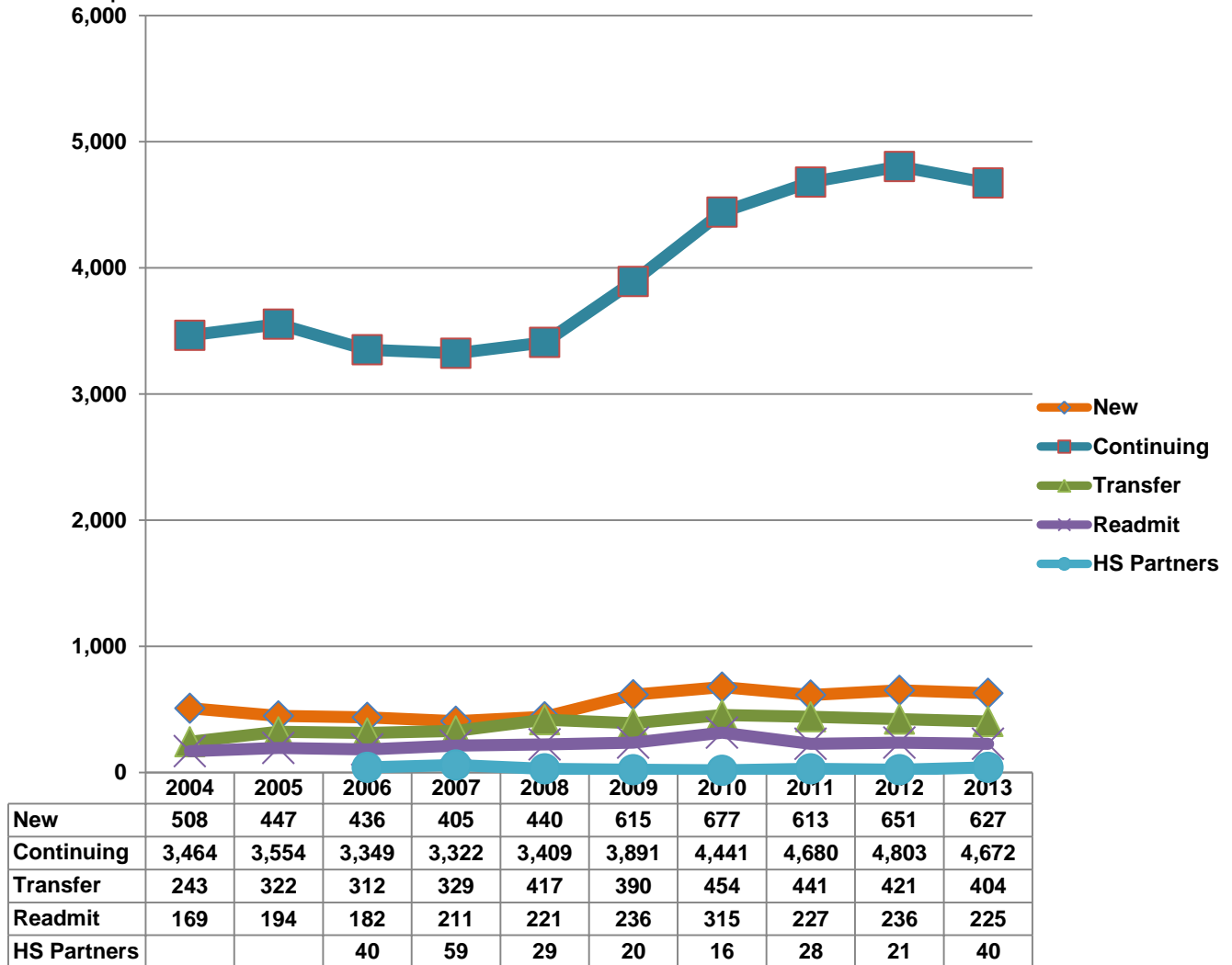
Student Type	Headcount Spring 2013 FINAL				Headcount Spring 2012 FINAL			
	Non-Degree	Degree Seeking	Total #	Total %	Non-Degree	Degree Seeking	Total #	Total %
New Students	55	547	627	10.5%	39	612	651	10.6%
Continuing Students	161	4,395	4,672	78.3%	195	4,608	4,803	78.3%
Transfer Students	139	253	404	6.8%	97	324	421	6.9%
Re-Admitted Students	16	206	225	3.8%	25	211	236	3.9%
Other	38	2	40	.7%	20	1	21	.3%
Total Registered	409	5,403	5,968	100.0%	376	5,756	6,132	100.0%

Of the 5,968 students who registered for the spring 2013 semester as of the official freeze, the majority of students who are continuing students (n=4,672, 78.3%). This figure includes some students who may have previously earned an Associate degree or Certificate from HCC. Almost eleven percent (n=627, 10.5%) of the student body enrolled are new students, first time in college. The distribution of the spring 2012 semester student profile student type is similar to spring 2013 distribution. However, as shown on the following pages the number of “continuing” students has shown an upward trend in the spring semesters since 2007.

FINAL Enrollment Profile for Spring 2013 Semester

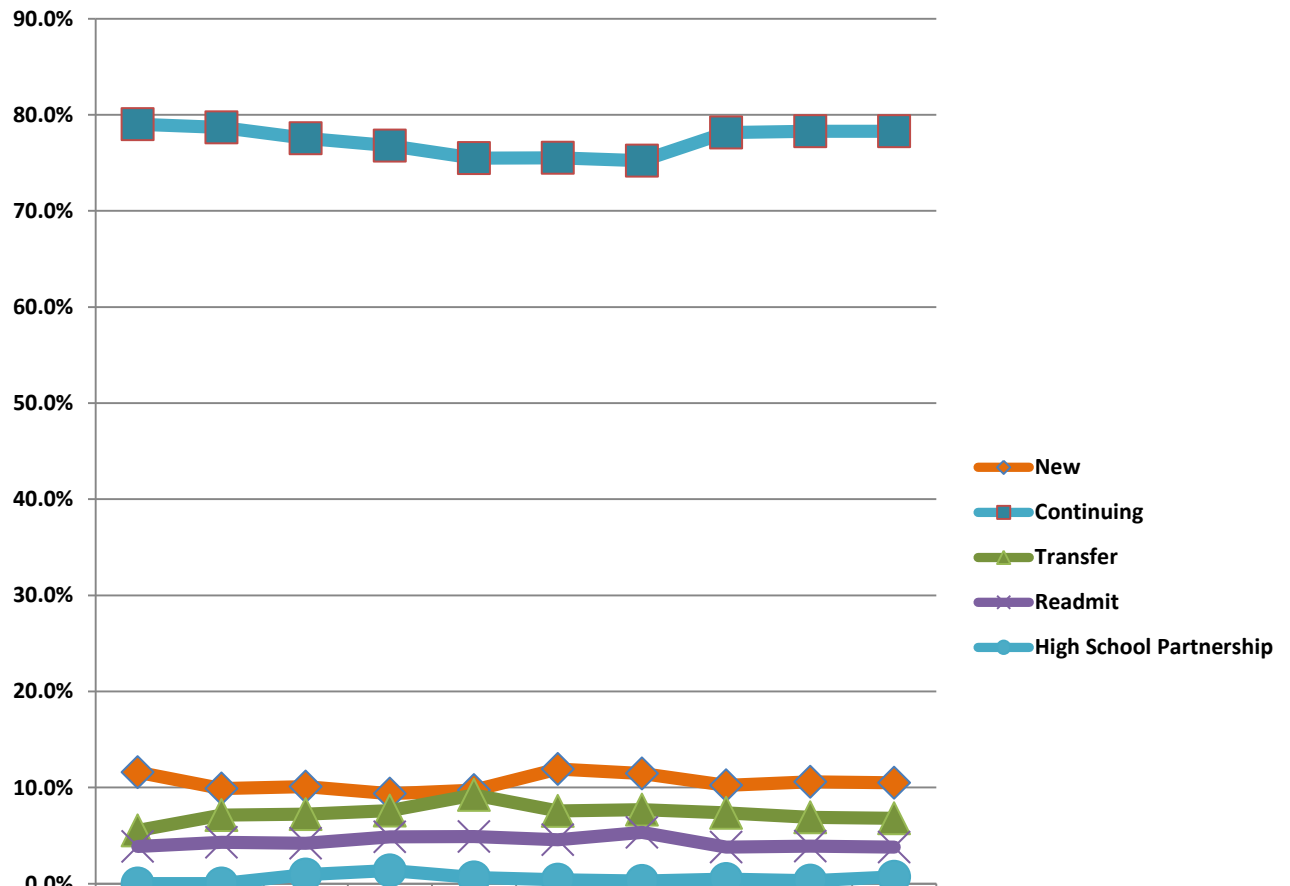
Student Type – Spring Semesters

Below is a chart indicating the enrollment status of our students over the last ten years. The decrease in headcount enrollment this spring shows in all categories of students: new, continuing, transfer, and readmitted students with the exception of “high school partnership” students.



FINAL Enrollment Profile for Spring 2013 Semester

Student Type – Spring Semesters *as Percentage of Total Enrollment*



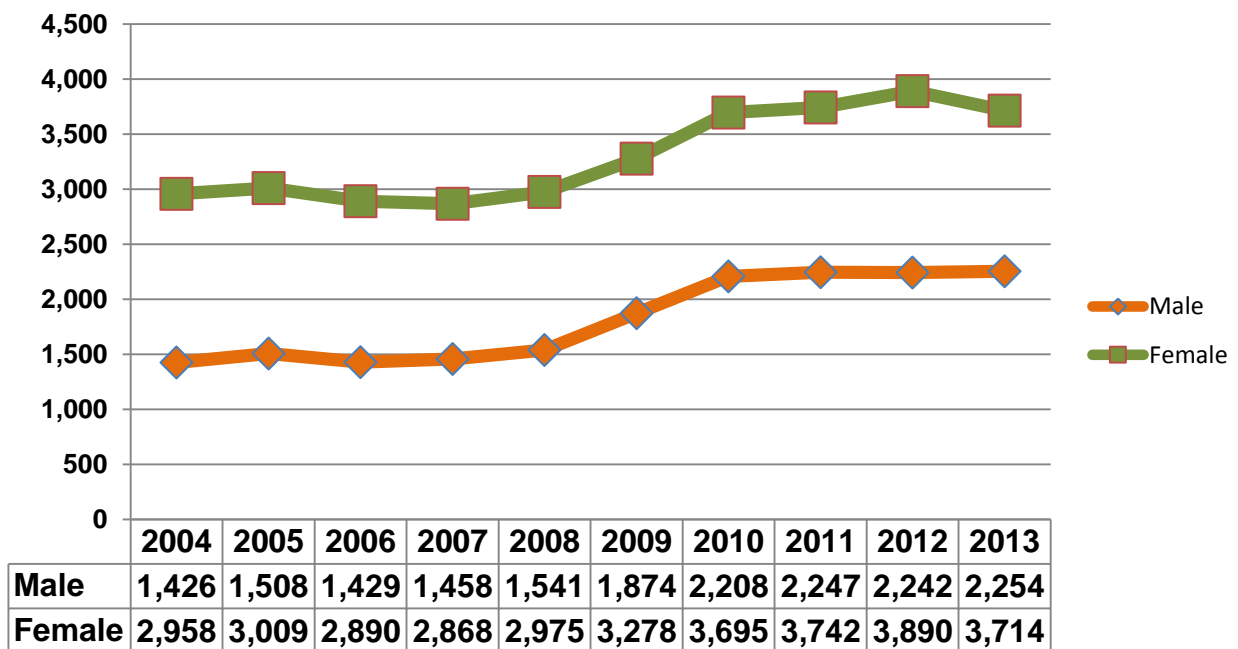
	2004	2005	2006	2007	2008	2009	2010	2011	2012	2013
New	11.6%	9.9%	10.1%	9.4%	9.7%	11.9%	11.5%	10.2%	10.6%	10.5%
Continuing	79.0%	78.7%	77.5%	76.8%	75.5%	75.5%	75.2%	78.1%	78.3%	78.3%
Transfer	5.5%	7.1%	7.2%	7.6%	9.2%	7.6%	7.7%	7.4%	6.9%	6.8%
Readmit	3.9%	4.3%	4.2%	4.9%	4.9%	4.6%	5.3%	3.8%	3.9%	3.8%
High School Partnership	0.0%	0.0%	0.9%	1.4%	0.6%	0.4%	0.3%	0.5%	0.3%	0.7%

FINAL Enrollment Profile for Spring 2013 Semester

Gender	FINAL Spring 2013		FINAL Spring 2012	
	Number	Percentage	Number	Percentage
Male	2,254	37.8%	2,242	36.6%
Female	3,714	62.2%	3,890	63.4%
Total Students	5,968	100.0%	6,132	100.0%

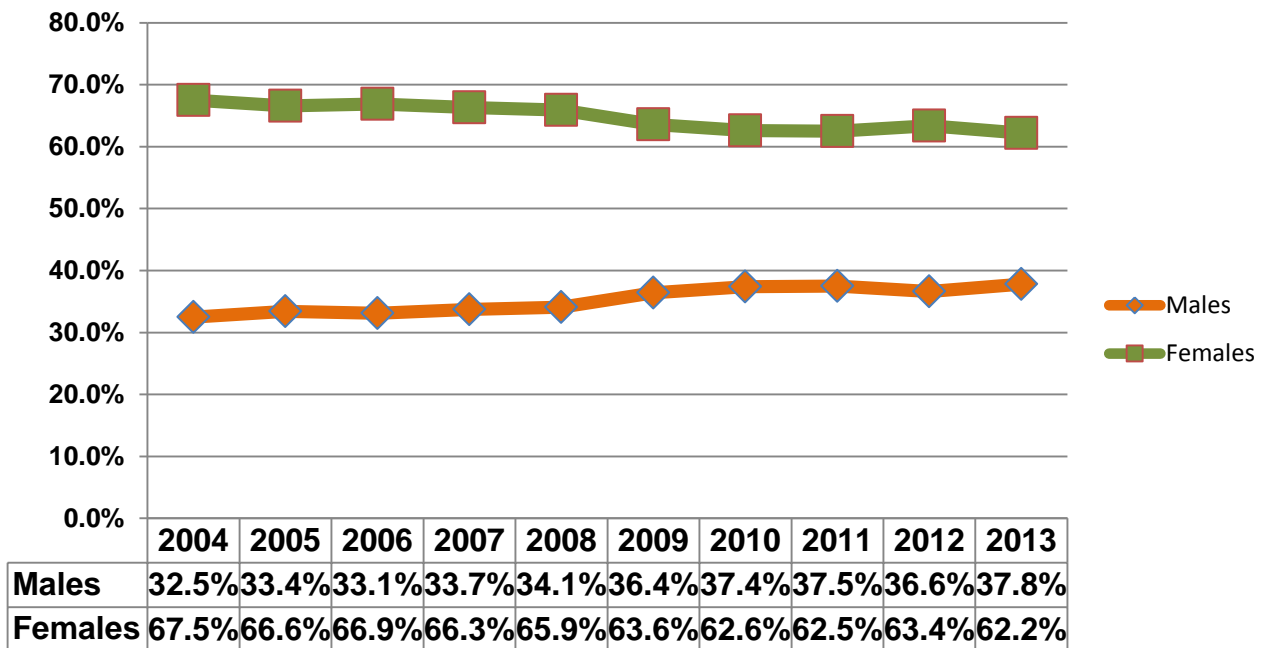
The majority of students who have enrolled this fall semester are female (n=3,714, 62.2%). The gender of registered students is similar to the profile of gender of students registered in the final roster for spring 2012. However, the number of female students enrolled each semester has continued to increase in the spring semesters since 2007 as noted below in the graph. This semester females are slightly down as a percentage of total headcount.

Gender - Spring Semesters - Headcount



FINAL Enrollment Profile for Spring 2013 Semester

Gender – Spring Semesters *as percentage of total enrollment*



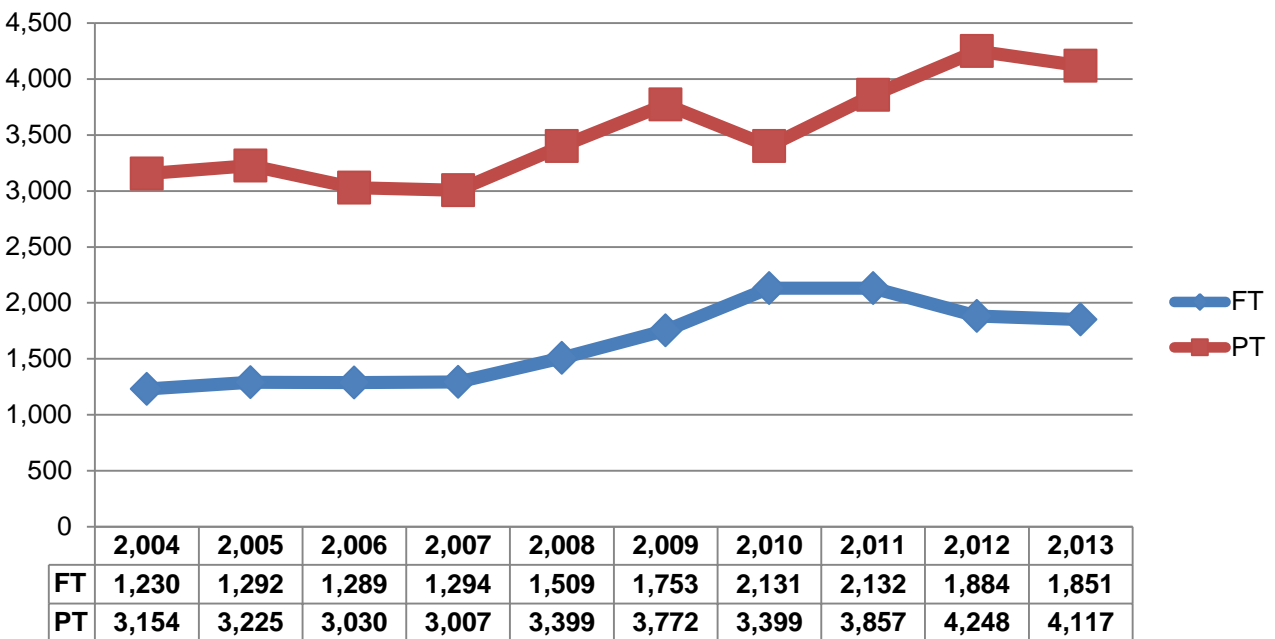
FINAL Enrollment Profile for Spring 2013 Semester

	FINAL Spring 2013	
FT/PT Status	Number	Percentage
Full-time	1,851	31.0%
Part-Time	4,117	69.0%
Total Students	5,968	100.0%

	FINAL Spring 2012	
	Number	Percentage
Full-time	1,884	30.7%
Part-Time	4,248	69.3%
Total Students	6,132	100.0%

The percentage of part time and full time students remained largely the same from spring 2012 to 2013, although there was a decrease in headcount. The percentage of part time students in the spring 2012 semester increased over spring 2011 almost five percent. This spring 2013 although there was a decrease in both part time and full time students, there was a larger decrease in the part time students.

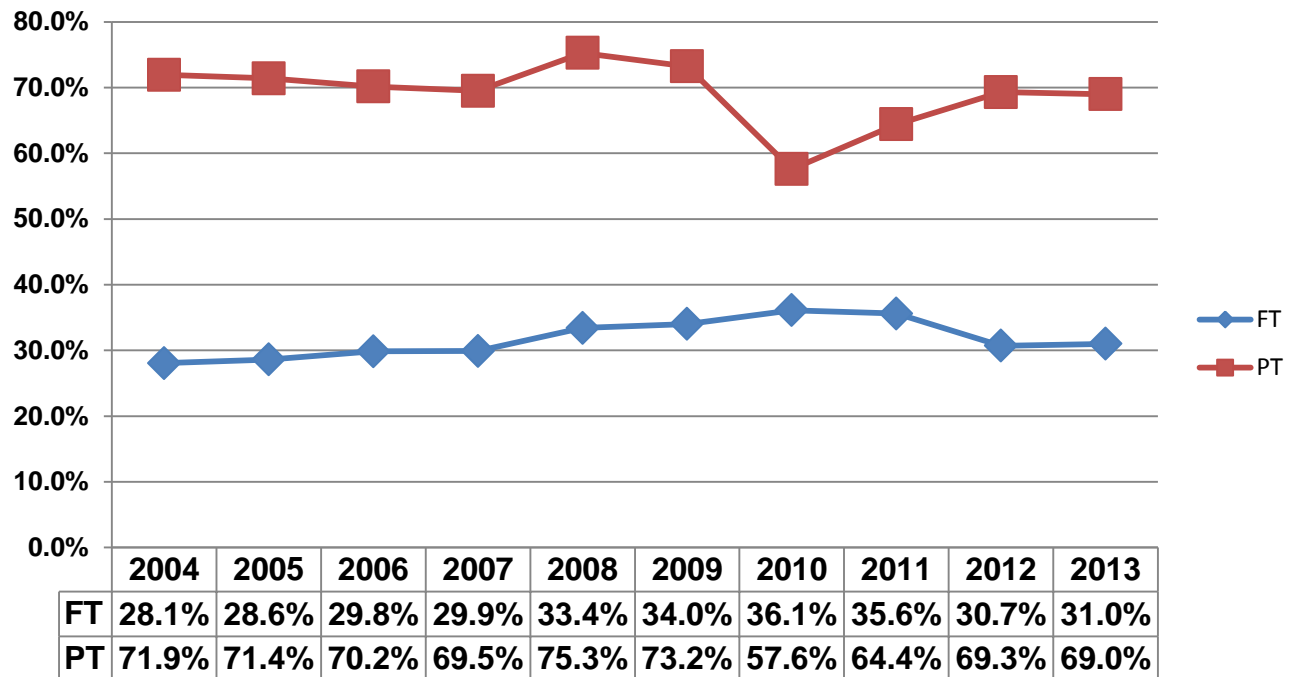
Headcount - Full-Time/Part-Time Status – Spring Semesters



FINAL Enrollment Profile for Spring 2013 Semester

Full-Time/Part-Time Status – Spring Semesters

as percentage of total enrollment



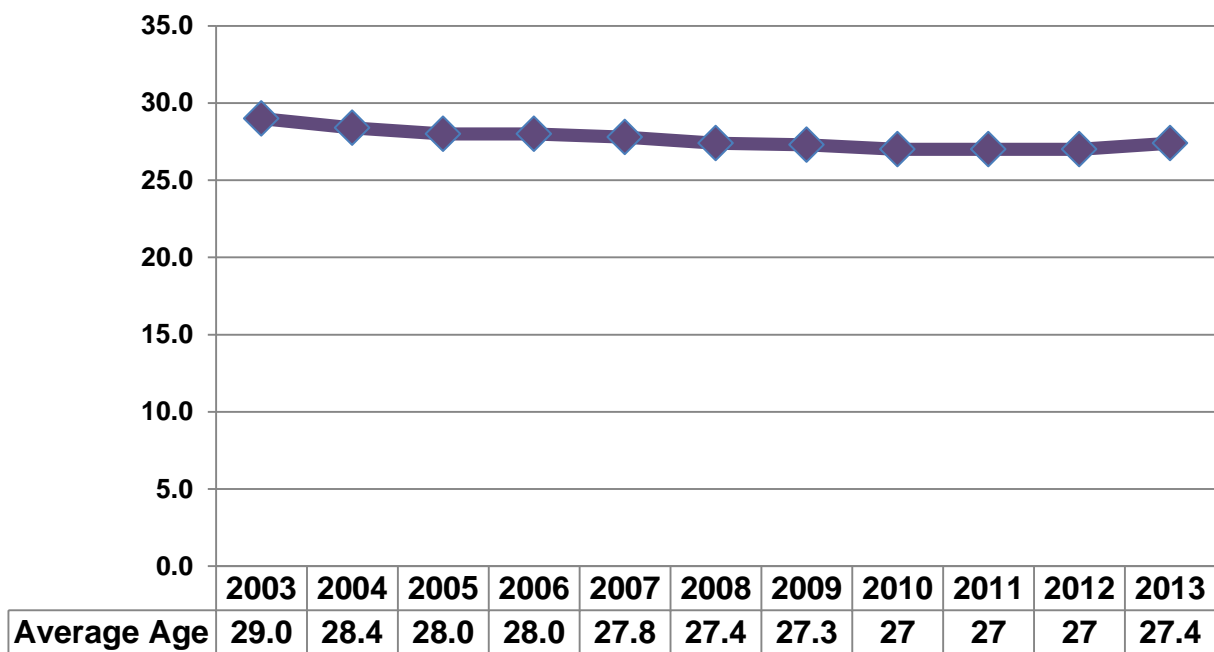
FINAL Enrollment Profile for Spring 2013 Semester

Final Spring 2013	
Age	
Mean	27.4
Median	23
Mode	19
Youngest Student Age	15
Oldest Student Age	88

FINAL Spring 2012	
Age	
Mean	27
Median	23
Mode	19
Youngest Student Age	12
Oldest Student Age	86

The age of students has remained consistently at a mean of approximately 27 years old. However, in the past ten spring semesters the mean age has decreased from 29 years old to 27 years old as can be seen on the graph below.

Average Age of Students – Spring Semesters



FINAL Enrollment Profile for Spring 2013 Semester

	FINAL Spring 2013	
Class Level	Number	Percentage
Freshmen	3,541	59.3%
Sophomore	2,427	40.7%
Total Students	5,968	100.0%

	FINAL Spring 2012	
Number	Percentage	
3,756	61.3%	
2,378	38.7%	
6,132	100.0%	

Freshmen are defined as accumulating 0-32 GPA credits, Sophomores are defined as earning 33 or more GPA credits.

Students enrolled are primarily at the freshmen level. As shown from the chart below, almost 18% of the courses taken are below college level thus creating a large number of students categorized as freshmen until they enroll in college level classes.

	FINAL Spring 2013	
Course Level	Number	Percentage
Developmental	2,486	15.7%
College 100	9,467	60.0%
College 200	3,834	24.3%
Total Students	15,786	100.0%

	FINAL Spring 2012	
Number	Percentage	
2,870	17.8%	
9,671	59.8%	
3,626	22.4%	
16,167	100.0%	

FINAL Enrollment Profile for Spring 2013 Semester

Ethnicity/Race	FINAL Spring 2013		FINAL Spring 2012	
	# of Students	% of Students	# of Students	% of Students
White (10)	2,169	36.3%	2,124	34.7%
Black or African American (20)	1,857	31.1%	1,840	30.0%
Hispanic (2)	1,585	26.6%	1,552	25.3%
Asian (45)	203	3.4%	201	3.3%
American Indian/Alaskan Native (50)	8	.1%	9	.1%
Native Hawaiian or Pacific Islander (80)	11	.2%	9	.1%
Other Race (90)	27	.5%	157	2.6%
Multi Races (MULTI)	89	1.5%	135	2.2%
Choose Not to Respond (60)	19	.3%	105	1.7%
Total Students	5,968	100.0%	6,132	100.0%

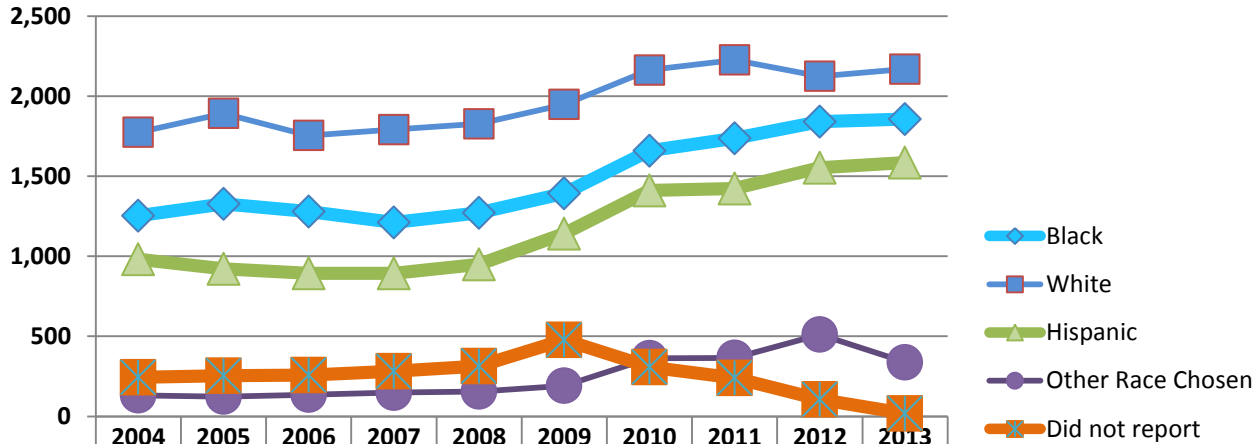
The distribution percentage of students' race/ethnicity registered for spring 2013 as compared to spring 2012 is shown above. The number of white students increased by 45 students and decreased by 102 (-.05%) students from spring 2011 semester. The number of Black students has increased by 17 students over spring 2012 and increased by 103 students (5.6%). Hispanic student enrollment increased by 33 students from spring 2012 to spring 2013. This is the highest percentage of the student body Hispanics have reached in spring semesters.

The number of students not reporting their race has decreased. This can be explained by the outreach effort to continue to get race/ethnicity information from students by the institutional research office and the faculty who have obtained the information from students attending their classes. The following page shows graphs of the ethnicity and race of the student body in the spring semesters over the past ten years.

FINAL Enrollment Profile for Spring 2013 Semester

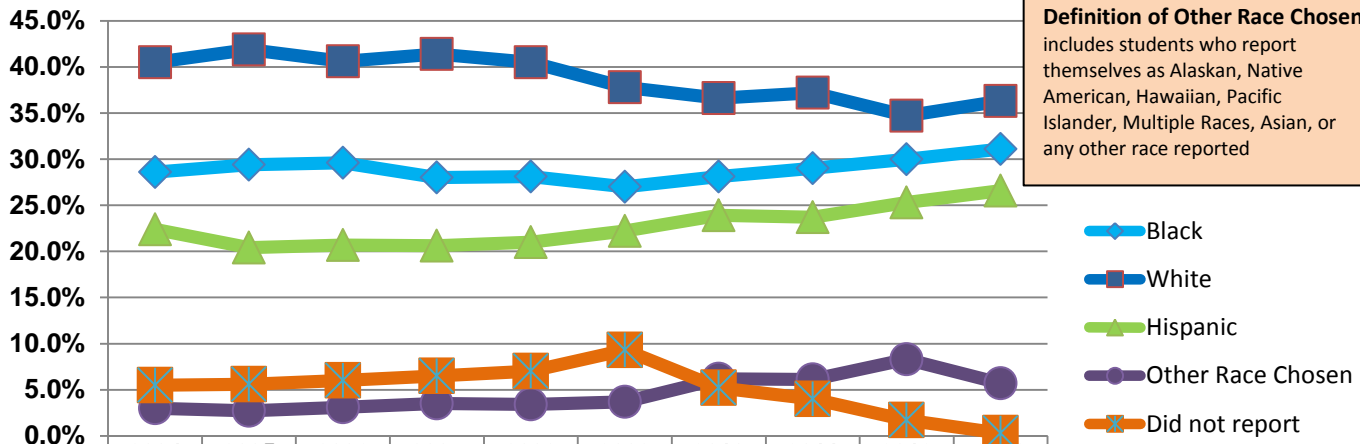
Race/Ethnicity of Students – Spring Semsters

Definition of Other Race Chosen includes students who report themselves as Alaskan, Native American, Hawaiian, Pacific Islander, Multiple Races, Asian, or any other race reported



Black	1,254	1,327	1,279	1,212	1,271	1,393	1,659	1,737	1,840	1,857
White	1,774	1,892	1,754	1,791	1,827	1,948	2,163	2,226	2,124	2,169
Hispanic	982	921	894	893	949	1,142	1,411	1,422	1,552	1,585
Other Race Chosen	131	123	135	148	155	191	363	365	511	338
Did not report	243	254	257	282	314	478	307	239	105	19

Race/Ethnicity of Students – Fall Semesters *as percentage of enrollment*



Black	28.6%	29.4%	29.6%	28.0%	28.1%	27.0%	28.1%	29.0%	30.0%	31.1%
White	40.5%	41.9%	40.6%	41.4%	40.5%	37.8%	36.6%	37.2%	34.7%	36.3%
Hispanic	22.4%	20.4%	20.7%	20.6%	21.0%	22.2%	23.9%	23.7%	25.3%	26.6%
Other Race Chosen	3.0%	2.7%	3.1%	3.5%	3.4%	3.7%	6.2%	6.1%	8.3%	5.7%
Did not report	5.5%	5.6%	6.0%	6.5%	7.0%	9.3%	5.2%	4.0%	1.7%	0.3%

FINAL Enrollment Profile for Spring 2013 Semester

PRIMARY PROGRAM	Fall 2012 enrollment	2011-12 Graduates	ELIGIBLE Cohort	as of February 7, 2013 PM FREEZE	
				Spring 2013 Enrollment	% Enrolled from Fall 2012 Eligible cohort
Communications	62	0	62	49	79.0%
Human Services	286	1	285	221	77.5%
Behavioral Sciences	195	3	192	148	77.1%
Accounting	210	2	208	159	76.4%
Health Occupations	66	0	66	49	74.2%
Art	170	2	168	124	73.8%
Business	539	4	535	383	71.6%
Information Technology	176	4	172	123	71.5%
Pre Nursing	654	2	652	466	71.5%
Criminal Justice	469	1	468	334	71.4%
Engineering Science	111	0	111	79	71.2%
General Studies	2,207	11	2,196	1,553	70.7%
Early Childhood Education	323	2	321	225	70.1%
Math and Science	86	0	86	60	69.8%
Theater	22	0	22	15	68.2%
Manufacturing	55	0	55	37	67.3%
Business Office Technology	18	0	18	10	55.6%
Advanced English Proficiency	10	0	10	4	40.0%
Non Major	463	0	463	184	39.7%
Total Students	6,122	32	6,090	4,223	69.3%

Accounting: EA03, EA06, EA61, EJ05; **Arts:** EB20, EB33, EB59, EB61, EB70, EJ91; **ARTS:** EB20, EB33, EB70, EJ91, EB59; **Business:** EA47, EA56, EA60, EA 65, EA67, EA89, EA55, EA56, EA57, EA58, EA63, EF08, EK03, EK05, EJ28; **Business Office Technology:** EA92, EB18, EJ09, EJ60, EJ70; **Criminal Justice:** EB13, EJ06, EJ61, EJ62, EJ63, EK01; **Communications:** EB46; **Early Childhood Education:** EA95, EB14, EJ07, EJ73, EJ89, EJ92; **Engineering Science:** EA08, EA30, EA90, EB16, EB47, EF06, EF11, EF12, EN12; **General Studies:** EB30, EX97; **Health Occupations:** EA23, EA77, EA79, EK02, EK55; **Human Services:** EB35, EB45, EF03, EJ67, EJ68, EJ69, EJ71, EJ72, EJ93; **Information Technology:** EB38, EB60, EJ01, EJ02, EJ04, EJ07, EJ10, EJ27, EJ97, EJ98, EK07; **Non-Degree:** EZ98, EZ99; **Science and Math:** EA05, EA97, EA98, EB42, EB48, EC35. **Theater:** EB61; Pre-Nursing Students are tagged in Banner. **MANUFACTURING** majors are not necessarily tagged in Banner.

Sixty-nine percent (n=4,223, 69.3%) of students who were enrolled in the fall 2012 semester were retained and enrolled for spring 2013 classes. Students who earned a degree or certificate in the fall and did not return in the spring were not included in the calculations as retained students.

FINAL Enrollment Profile for Spring 2013 Semester

Associate Degree Seeking Major	# Primary Major
Accounting	186
Accounting Assistant	1
Accounting: Small Business Option	12
Aviation Maintenance	8
Banking	8
Business Office Technology: Executive Assistant	9
Business Office Technology: Word Info. Process	4
Business Administration: Customer Service/Marketing	33
Business Administration: Finance	37
Business Administration: General	271
Business Administration: Global Business Option	17
Business Administration: Human Resource Management	22
Business Administration: Management	105
Business Administration: Small Business Management	73
CIS: Web Development	9
CIS: Business Info Systems	2
Computer Information Systems	109
Criminal Justice	462
Early Childhood Education	282
Early Childhood: Special Education	30
Engineering Science	51
Fine Arts: Art	53
General Studies	2,687
Graphic Design	76
Graphic Design: Computer Graphics	2
Graphic Design: Multimedia Option	30
Human Services	292
LAS: Computer Science	41
LAS: Human/Behavioral & Social Science	201
LAS: Journalism/Communication	78
LAS: Math/Science	42
LAS: Pre-Engineering Science	32
LAS: Pre-Environmental Science	11
Nursing	9
Occupational Therapy Assistant	30
Pathway to Teaching Careers	28
Physical Therapist Assistant	14

FINAL Enrollment Profile for Spring 2013 Semester

Associate Degree Seeking Major	# Primary Major
Tech Studies: Engineering Technology Option	1
Tech Studies: Industrial Tech Option	3
Tech Studies: Electrical	9
Technology Studies	2
Theater Arts	31
Total	5,403

Note: 669 of the above students have indicated an interest in Pre-Nursing and are also tagged as such. Students are primarily General Studies majors, but are also found in other major areas.

FINAL Enrollment Profile for Spring 2013 Semester

Certificate Seeking	Primary Major
Accounting	2
Accounting for Small Business	3
Advanced English Proficiency	3
Business Office Technology: Admin Support Assistant	4
Child Development Associate Prep	5
Corrections	1
Criminal Investigation	10
Customer Service/Marketing	1
Early Childhood Education	22
Electrical	4
Graphic Design	2
Health Career Pathways	12
Human Services: Behavioral Healthcare Specialist I	17
Human Services: Behavioral Healthcare Specialist II	3
Human Services: Child/Youth Mental Health	5
Human Services: Disabilities	1
Human Services: Mental Health	1
Machine Technology Level I	21
Machine Technology Level II	4
PC Repair Technology	10
Police Management & Administration	2
Retail Banking	2
Small Business Management/Entrepreneurship	11
Technical Web Site Design	1
Web Design - Technology	7
Web Design-Graphics	2
Total Certificate Seeking	156

FINAL Enrollment Profile for Spring 2013 Semester

Advisors, Counselors, and Faculty Advisors

Advisor of Record	# of Students Advising
Adams, Rebecca	69
Albaz, Asher	115
Amico, Michael C	51
Anzenberger, Joanne	107
Barnes, Sandra	877
Becker, Edward	95
Benezra, Theodora	69
Bloom, Eleanor J	35
Boylan, Kevin M	84
Brown, David E	77
Cahill-Lamboley, Maureen	69
Cercone, Kathleen	93
Chance, Edwena S	111
Clark, Mary K	407
Coba-Loh, Claudine J	25
Cohen, Michele	99
Conway, Janice	22
Robin Curry	16
Dawson, Asantewa	48
Empric, Scott	59
Favret, John L	101
Gallagher, Joan F	134
Griffin, William R	37
Grossman, William G	50
Hart, Stephanie A	27
Hughes, Kirk	74
Keane, Edward C	204
Keenan, Paul J	102

FINAL Enrollment Profile for Spring 2013 Semester

Advisor of Record Continued	
Kocay, Michelle	65
Koch, David A	82
Kozek, Teresa A	45
Krill, Vernon J	165
Lanci, Janet M	91
Leach, Mark	101
Lloyd, Joan	49
Mandel, Michael R	152
Mannion, Samantha	201
Mark, Steven W	23
Mellouk, Dris	47
Meyrick, Charles W	42
Micinilio, Kathleen	40
Monroe, Susan	48
Nelson, Robert E	78
Noe, Laurie	169
Ortiz, Jamilet R	57
Pappantoniou, Antonios	11
Philips, Marina	113
Pinto, Andrew N	67
Pirog, Pamela J	158
Ravanshad, Farshad	56
Reed, Michele	68
Richards, Barbara E	106
Rizzi, Richard	63
Roche, Maria S	32
Rondinone, Toyna H	22
Rose, Eddie B	25
Ryder, Robert	107
Samberg, Rebecca	36
Schissler, Henry	13
Senes, Antonio	1
Sheehan, Geoffrey T	42
Smith, Karyn L	87
Sommers, Irene J	3

FINAL Enrollment Profile for Spring 2013 Semester

Advisor of Record Continued	
Sopchak, John C	46
Steeves, Elizabeth	60
Szobota, Heidi W	4
Toedt, Kathleen	10
Tomey, Shelley S	68
Valovcin, Mary Ann	53
Zander, Kyle	5
Total	5,968

FINAL Enrollment Profile for Spring 2013 Semester

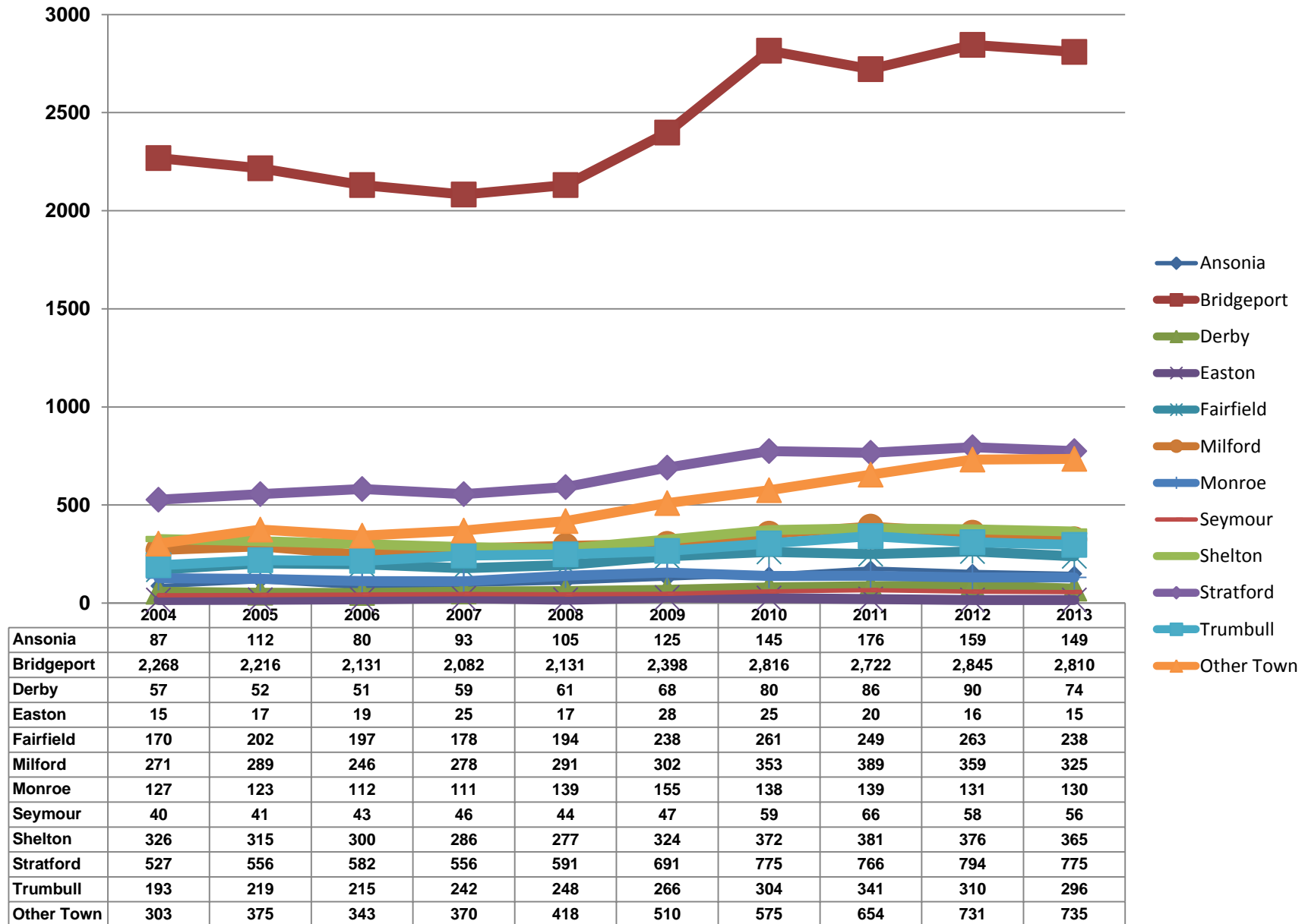
Student Residency

Student Residency	Spring 2013		Spring 2012		% increase/decrease
	Count	% of enrollment	Count	% of enrollment	
Ansonia	149	2.5%	159	2.6%	-6.2
Bridgeport	2,810	47.1%	2,845	46.5%	-1.2%
Derby	74	1.2%	90	1.5%	-17.8%
Easton	15	.3%	16	.3%	-6.25%
Fairfield	238	4.0%	263	4.3%	-9.5%
Milford	325	5.4%	359	5.8%	-9.5%
Monroe	130	2.2%	131	2.1%	.8%
Seymour	56	.9%	58	.9%	-3.4%
Shelton	365	6.1%	376	6.1%	-2.9%
Stratford	775	13.0%	794	12.9%	-2.4%
Trumbull	296	5.0%	310	5.1%	-4.5%
Total Students in Service Area	5,233	87.7%	5,401	88.1%	-3.1%
Students Residing in Towns Not in Service Area	735	12.3%	731	11.9%	.5%
Total	5,968	100.0%	6,132	100.0%	NA

The numbers above reflect the current residency of the entire student body. It does not reflect the recruitment efforts of traditional age college students and should not be analyzed as such.

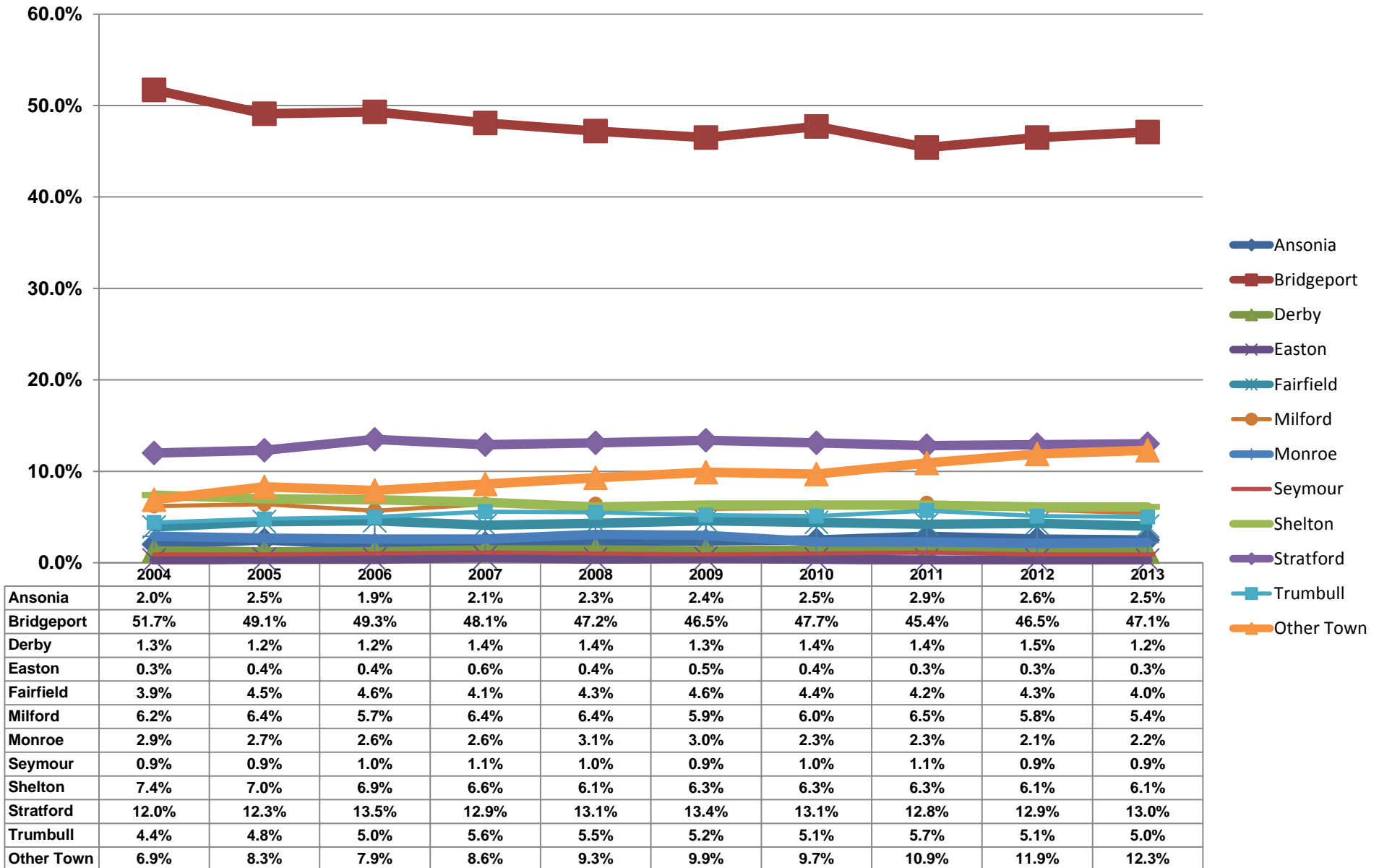
FINAL Enrollment Profile for Spring 2013 Semester

Headcount Enrollment by Town – Fall Semesters



FINAL Enrollment Profile for Spring 2013 Semester

Headcount Enrollment by Town as percentage of enrollment



FINAL Enrollment Profile for Spring 2013 Semester

			Grand Total Students Enrolled in Major	Students in Major enrolled in Developmental Courses									
<i>Program</i>	<i>Major Description</i>	<i>Code</i>		Developmental Writing		Developmental Math		DS 099		Developmental Reading		English as a Second Language	
			#	# Dev.	% Dev	# Dev.	% Dev	# Dev.	% Dev	# Dev.	% Dev	# Dev.	% Dev
Accounting	Accounting	EA03	186	12	6.5%	21	11.3%	7	3.8%	0	0.0%	10	5.4%
	Accounting - CERT	EJ05	2	0	0.0%	0	0.0%	0	0.0%	0	0.0%	0	0.0%
	Accounting Assistant	EA06	1	0	0.0%	0	0.0%	0	0.0%	0	0.0%	0	0.0%
	Accounting for Small Business*	EJ80	3	0	0.0%	0	0.0%	0	0.0%	0	0.0%	0	0.0%
	Accounting Small Business Option	EA61	12	0	0.0%	0	0.0%	0	0.0%	0	0.0%	1	8.3%
ACCOUNTING TOTAL			204	12	NA	21	NA	7	NA	0	NA	11	NA
Arts	Fine Arts: Art	EB20	53	3	5.7%	7	13.2%	1	1.9%	2	3.8%	0	0.0%
	Graphic Design	EB33	76	11	14.5%	17	22.4%	6	7.9%	6	7.9%	0	0.0%
	Graphic Design - CERT	EJ91	2	0	0.0%	0	0.0%	0	0.0%	0	0.0%	0	0.0%
	Graphic Design: Multi Media	EB70	30	3	10.0%	3	10.0%	2	6.7%	2	6.7%	0	0.0%
	Graphic Design: Comp Graphics	EB59	2	0	0.0%	0	0.0%	0	0.0%	0	0.0%	0	0.0%
	Web Design Graphics-CERT	EK06	2	0	0.0%	0	0.0%	0	0.0%	0	0.0%	0	0.0%
ARTS TOTAL			165	17	NA	27	NA	9	NA	10	NA	0	NA
Business Administration	Bus Adm: Customer Srv/Marketing*	EB55	33	5	15.2%	7	21.2%	6	18.2%	4	12.1%	1	3.0%
	Customer Service/Marketing -CERT	EK03	1	0	0.0%	0	0.0%	0	0.0%	0	0.0%	0	0.0%
	Bus Adm: Finance	EA56	37	3	8.1%	4	10.8%	2	5.4%	1	2.7%	1	2.7%
	Bus Adm: General	EA67	271	30	11.1%	47	17.3%	16	5.9%	24	8.9%	7	2.6%
	Bus Adm: Global Business	EA65	17	2	11.8%	3	17.6%	1	5.9%	2	11.8%	1	5.9%
	Bus Adm: Human Resource Mgmt	EB56	22	2	9.1%	3	13.6%	2	9.1%	2	9.1%	0	0.0%
	Bus Adm: Management	EA60	105	14	13.3%	21	20.0%	10	9.5%	9	8.6%	1	1.0%
	Bus Adm: Small Bus Management	EA89	73	7	9.6%	20	27.4%	4	5.5%	4	5.5%	2	2.7%
	Small Busi/Entrp Management	EK05	11	1	9.1%	3	27.3%	0	0.0%	0	0.0%	1	9.1%
	Banking	EF08	8	1	12.5%	0	0.0%	0	0.0%	1	12.5%	1	12.5%
	CIS: Business Information Technology	EB62	2	1	50.0%	1	50.0%	0	0.0%	0	0.0%	0	0.0%
	Retail Banking-CERT	EK04	2	0	0.0%	0	0.0%	0	0.0%	0	0.0%	1	50.0%
	CIS Web Development	EB63	9	1	11.1%	2	22.2%	1	11.1%	1	11.1%	0	0.0%
BUSINESS ADMINISTRATION TOTAL			591	67	NA	111	NA	42	NA	48	NA	16	NA

FINAL Enrollment Profile for Spring 2013 Semester

			Grand Total Students Enrolled in Major	Students in Major enrolled in Developmental Courses									
				Developmental Writing		Developmental Math		DS 099		Developmental Reading		English as a Second Language	
Program	Major Description	Code	#	# Dev.	% Dev	# Dev.	% Dev	# Dev.	% Dev	# Dev.	% Dev	# Dev.	% Dev
Business Office Technology	BOT: Admin Support Asst - CERT	EJO9	4	1	25.0%	0	0.0%	0	0.0%	0	0.0%	0	0.0%
	BOT: Executive Assistant	EB18	9	0	0.0%	0	0.0%	0	0.0%	0	0.0%	0	0.0%
	BOT: Word Processing	EA92	4	1	25.0%	3	75.0%	1	25.0%	1	25.0%	0	0.0%
BUSINESS OFFICE TECHNOLOGY TOTAL			17	2	NA	3	NA	1	NA	1	NA	0	NA
Criminal Justice	Corrections - CERT	EJ62	1	0	0.0%	0	0.0%	0	0.0%	0	0.0%	0	0.0%
	Criminal Investigation - CERT	EJ61	10	2	20.0%	4	40.0%	1	10.0%	3	30.0%	0	0.0%
	Criminal Justice	EB13	462	60	13.0%	102	22.1%	35	7.6%	38	8.2%	3	0.6%
	Police Management & Admin - CERT	EJ06	2	1	50.0%	2	100.0%	1	50.0%	1	50.0%	0	0.0%
CRIMINAL JUSTICE TOTAL			475	63	NA	108	NA	37	NA	42	NA	3	NA
Communications	LAS: Journalism/Communications	EB46	78	7	9.0%	19	24.4%	5	6.4%	5	6.4%	0	0.0%
COMMUNICATIONS TOTAL			78	7	NA	19	NA	5	NA	5	NA	0	NA
Early Childhood Education	Child Devl Associate Prep	EJ73	5	0	0.0%	0	0.0%	0	0.0%	0	0.0%	0	0.0%
	Early Childhood Ed - CERT	EJ89	22	1	4.5%	3	13.6%	4	18.2%	3	13.6%	1	4.5%
	Early Childhood Education	EA95	282	26	9.2%	42	14.9%	12	4.3%	17	6.0%	6	2.1%
	Early Childhood: Special Edu* see below	EB14	30	1	3.3%	7	23.3%	1	3.3%	2	6.7%	0	0.0%
EARLY CHILDHOOD EDUCATION TOTAL			339	28	NA	52	NA	17	NA	22	NA	7	NA
Engineering Science	Aviation Maintenance	EA30	8	2	25.0%	3	37.5%	0	0.0%	1	12.5%	2	25.0%
	Electrical - CERT	EN12	4	2	50.0%	2	50.0%	2	50.0%	2	50.0%	1	25.0%
	Technology Studies: Electrical	EF06	9	0	0.0%	1	11.1%	0	0.0%	0	0.0%	0	0.0%
	Engineering Science/Pre-Engineering	EB16	51	1	2.0%	2	3.9%	0	0.0%	2	3.9%	4	7.8%
	LAS: pre-Engineering	EB47	32	1	3.1%	4	12.5%	1	3.1%	1	3.1%	1	3.1%
	Technology Studies: Eng. Technology	EF12	1	0	0.0%	0	0.0%	0	0.0%	0	0.0%	0	0.0%
	Technology Studies: Industrial Tech. Opt.	EF19	3	0	0.0%	0	0.0%	0	0.0%	0	0.0%	1	33.3%
	Machine Technology Level I	EJ83	21	0	0.0%	0	0.0%	0	0.0%	0	0.0%	0	0.0%
	Machine Technology Level II	EJ84	4	1	25.0%	1	25.0%	1	25.0%	1	25.0%	0	0.0%
Technology Studies	EF11	2	0	0.0%	0	0.0%	0	0.0%	0	0.0%	0	0.0%	
ENGINEERING SCIENCE TOTAL			135	7	NA	13	NA	4	NA	7	NA	9	NA

FINAL Enrollment Profile for Spring 2013 Semester

			Grand Total Students Enrolled in Major	Students in Major enrolled in Developmental Courses									
				Developmental Writing		Developmental Math		DS 099		Developmental Reading		English as a Second Language	
ESL Advanced	Advanced English Proficiency- CERT	EJ03	3	0	0.0%	0	0.0%	0	0.0%	0	0.0%	3	100.0%
ESL ADVANCED TOTAL			3	0	NA	0	NA	0	NA	0	NA	3	NA
General Studies	General Studies	EB30	2687	278	10.3%	529	19.7%	198	7.4%	235	8.7%	154	5.7%
GENERAL STUDIES TOTAL			2687	278	NA	529	NA	198	NA	235	NA	154	NA
Health Occupations	Nursing* as of freeze date	EA23	9	0	0.0%	0	0.0%	0	0.0%	0	0.0%	0	0.0%
	Occupational Therapy Asst	EA77	30	0	0.0%	0	0.0%	0	0.0%	0	0.0%	0	0.0%
	Physical Therapy Asst	EA79	14	0	0.0%	0	0.0%	0	0.0%	1	7.1%	0	0.0%
	Health Careers Pathway - CERT	EK55	12	0	0.0%	3	25.0%	1	8.3%	0	0.0%	1	8.3%
HEALTH OCCUPATIONS TOTAL			65	0	NA	3	NA	1	NA	1	NA	1	NA
Human Services	HS: Behav Hlthcare Spec I - CERT	EJ67	17	1	5.9%	2	11.8%	1	5.9%	1	5.9%	0	0.0%
	HS: Behav Hlthcare Spec II - CERT	EJ68	3	0	0.0%	0	0.0%	0	0.0%	0	0.0%	0	0.0%
	HS: Chld/Youth Mntl Hlth - CERT-discontinued	EJ71	5	0	0.0%	0	0.0%	0	0.0%	1	20.0%	0	0.0%
	HS: Disabilities Spec - CERT -discontinued	EJ72	1	0	0.0%	0	0.0%	0	0.0%	0	0.0%	0	0.0%
	HS: Mental Health - CERT	EJ93	1	0	0.0%	0	0.0%	0	0.0%	0	0.0%	0	0.0%
	Human Services	EB35	292	31	10.6%	54	18.5%	26	8.9%	32	11.0%	5	1.7%
	LAS: Hum/Behav & Social Sci	EB45	201	19	9.5%	31	15.4%	11	5.5%	11	5.5%	1	0.5%
HUMAN SERVICES TOTAL			520	51	NA	87	NA	38	NA	45	NA	6	NA
Information Technology	Computer Information Systems	EB60	109	9	8.3%	17	15.6%	4	3.7%	7	6.4%	1	0.9%
	PC Repair Technology - CERT	EJ02	10	2	20.0%	3	30.0%	1	10.0%	0	0.0%	4	40.0%
	Web Design Technology CERT	EK07	7	0	0.0%	0	0.0%	0	0.0%	0	0.0%	0	0.0%
	LAS: Computer Science	EB38	41	3	7.3%	6	14.6%	1	2.4%	1	2.4%	1	2.4%
	Technical Web Site Design - CERT	EJ10	1	0	0.0%	0	0.0%	0	0.0%	0	0.0%	0	0.0%
INFORMATION TECHNOLOGY TOTAL			168	14	NA	26	NA	6	NA	8	NA	6	NA
Non Degree	NON DEGREE/MATRIC	EZ98	2	0	0.0%	0	0.0%	0	0.0%	0	0.0%	0	0.0%
	NON DEGREE/NON MATRIC	EZ99	407	11	2.7%	13	3.2%	4	1.0%	1	0.2%	5	1.2%
NON DEGREE TOTAL			409	11	NA	13	NA	4	NA	1	NA	5	NA

FINAL Enrollment Profile for Spring 2013 Semester

			Grand Total Students Enrolled in Major	Students in Major enrolled in Developmental Courses									
				Developmental Writing		Developmental Math		DS 099		Developmental Reading		English as a Second Language	
Science & Math	LAS: Math/Science	EB42	42	2	4.8%	2	4.8%	2	4.8%	3	7.1%	1	2.4%
	LAS: Pre-Environmental Sci	EB48	11	1	9.1%	2	18.2%	0	0.0%	0	0.0%	0	0.0%
	Pathways to Teaching	EC35	28	1	3.6%	7	25.0%	0	0.0%	1	3.6%	1	3.6%
SCIENCES & MATH TOTAL			81	4	NA	11	NA	2	NA	4	NA	2	NA
Theater	Theater Arts	EB61	31	5	16.1%	7	22.6%	3	9.7%	3	9.7%	0	0.0%
THEATER ARTS			31	5	NA	7	NA	3	NA	3	NA	0	NA
Totals:			5,968	566	NA	1,030	NA	374	NA	432	NA	220	NA